

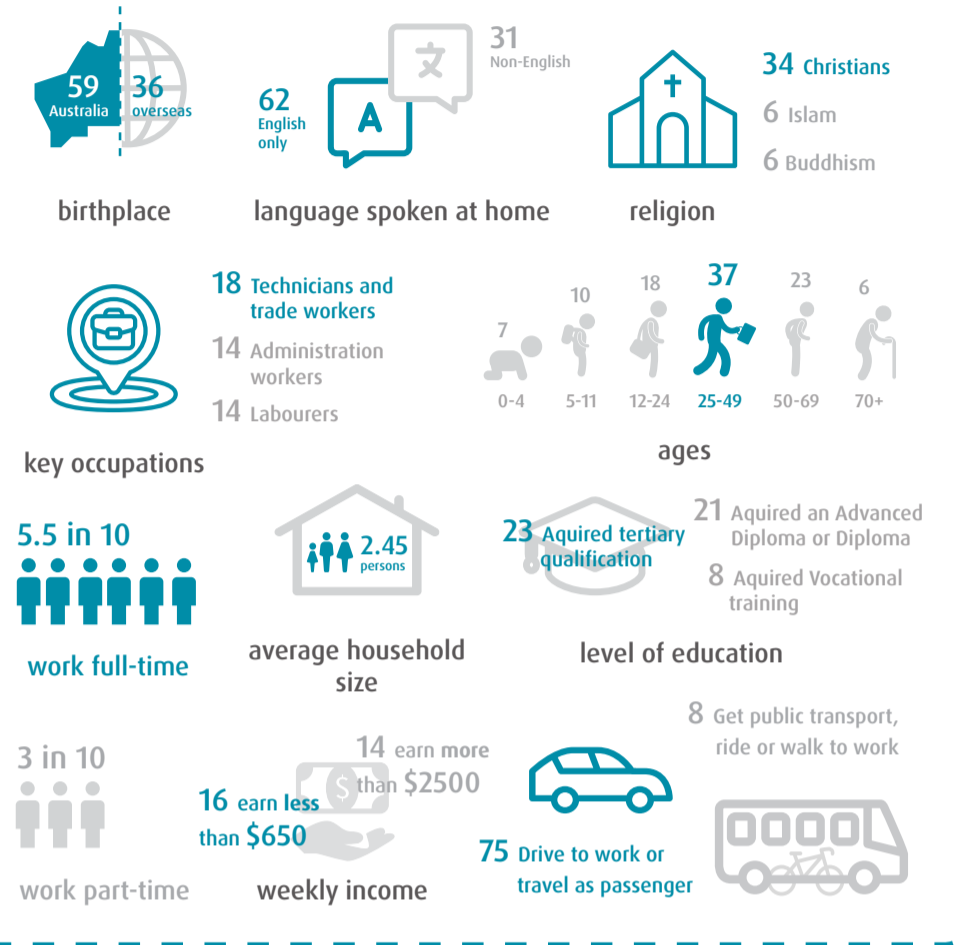
Altone Local Area Plan

2022/23 Updates

Community Snapshot

If Altone was a village of 100 people, what would it look like?

There are just under 23,000 people living in Altone. Represented by 100 people, this what Altone looks like.



Altone Local Area Plan Priorities



In 2020, community engagement was undertaken to allow the Altone community the opportunity to identify issues through a consultative process, and for the City to develop priorities for each area.



Adopted in July 2021, the Altone Local Area Plan outlines the community's priorities, determined by the feedback received throughout the engagement period.



Altone Local Area Plan 2022/23 Updates

The following map indicates what is being done in the area in support of the priorities in the LAP's second year of operation. These updates will be published on the City's website and updated annually to inform the community.



PRIORITY 1 UPDATES

- A survey was undertaken in March 2022 to gauge community preference on a range of playspace related items. The purpose was to understand what amenities communities like to see at a playspace. 24 of the survey responses were from members of the Altone community. The feedback provided is important as it will inform the development of the City's Play Space Strategy.

PRIORITY 2 UPDATES

- METRONET is preparing the draft precinct structure plan for the Malaga Station to guide long-term planning in and around the station. The City will continue to work with the METRONET team to ensure cycling and walking connections will be accessible for the Altone community.

PRIORITY 3 UPDATES

- The Urban Forest Plan was open for public comment from April to May, 2021. A briefing to Council was held in April 2022 and the City's Asset Management business unit is investigating planting opportunities for each ward.
- In April 2022 the Beechboro Public Library held a Nature know-how workshop on the importance of trees and what services they provide to people and wildlife including food, oxygen, shelter, shade and even inspiration for art.

PRIORITY 4 UPDATES

- The Beechboro Public Library offer on-going programs to its Culturally and Linguistically Diverse (CaLD) communities including "Let's Talk", Spanish for beginners and book clubs.
- The City hosts the East Metropolitan Multicultural Network meetings quarterly at the Beechboro Community Hub.
- The City delivers workshops for CaLD communities to promote information sharing, improve connections and foster better understanding between cultures.

PRIORITY 5 UPDATES

- The Junior Basketball program transitioned to Swan Active Beechboro with 14 teams from Midland, with 150 additional children engaged weekly.
- Futures Lab: Coder Dojo workshops are held fortnightly on Tuesdays at Beechboro Public Library.
- The City's youth development team and Altone Youth Service delivered a skate, scooter and bmx program in May-June 2022 at the Altone Park.

PRIORITY 6 UPDATES

- In 2021 the City of Swan's Beechboro Community Hub was awarded Community Facility of the Year at the Parks and Leisure Australia Regional Awards WA.
- In June 2022, the refurbished Alice Davoren Centre reopened. The works included modifications to the entry, new and refurbished toilet facilities, offices, first aid room and work rooms.
- Brockman Community Centre at Hull Park is nearing completion, with an expected operational date of mid-end 2022.

PRIORITY 7 UPDATES

- The Reconciliation Action Plan was endorsed by Council and formally endorsed by Reconciliation Australia in March 2022.
- In April 2022 a mural was designed and painted by young people at the Altone Youth Centre. The mural features Noongar words and symbols that represent country, connection, community and spirit.
- Naidoc week celebrations are being held in July 2022, with the Beechboro Library holding various events, activities and Dreamtime Stories.