

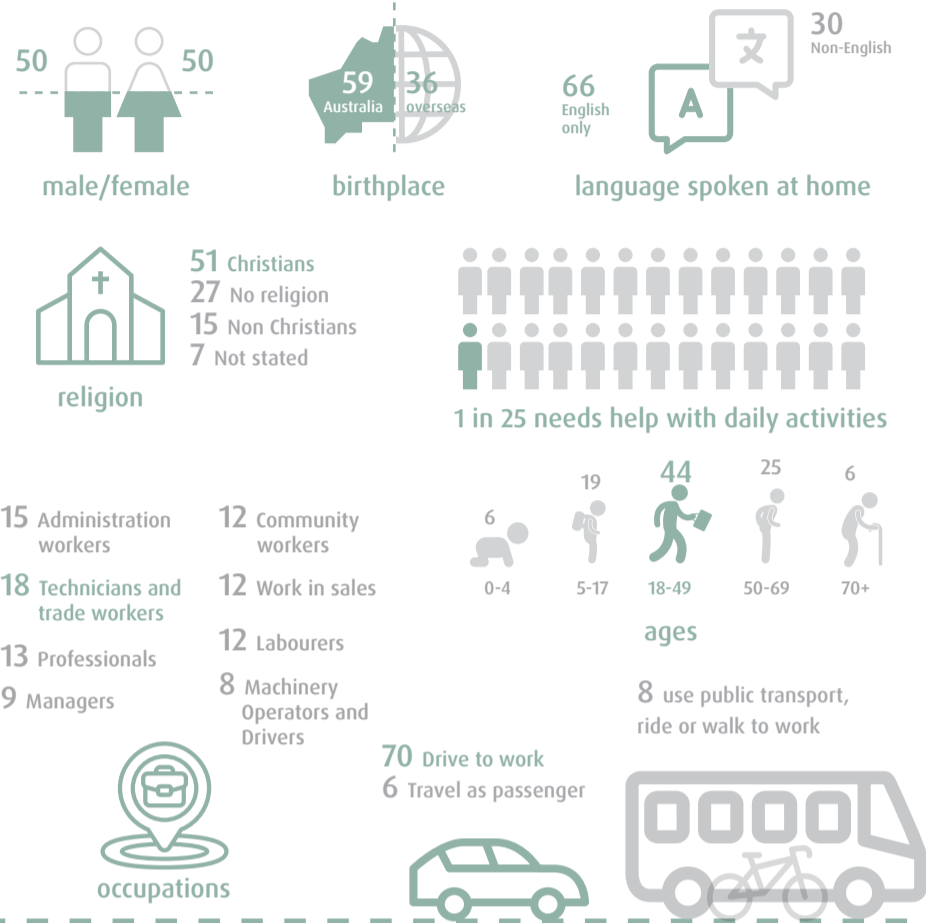
# Ballajura Local Area Plan - 2022 Updates

## Second Year Review

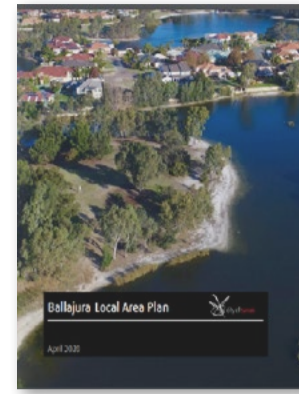
### Community Snapshot

If Ballajura was a village of 100 people, what would it look like?

There are just over 19,000 people living in Ballajura. Represented by 100 people, this what Ballajura looks like.



### Ballajura Local Area Plan Priorities



In 2019, community engagement was undertaken to allow the Ballajura community the opportunity to identify issues through a consultative process, and for the City to develop priorities for each area.

749 people viewed the online consultation 2,345 times

487 comments were made by 247 people

Adopted in March 2020, the Ballajura Local Area Plan outlines the community's priorities, determined by the feedback received throughout the engagement period.

**Priority 1 - Ensuring adequate amenities and Infrastructure for public open space**

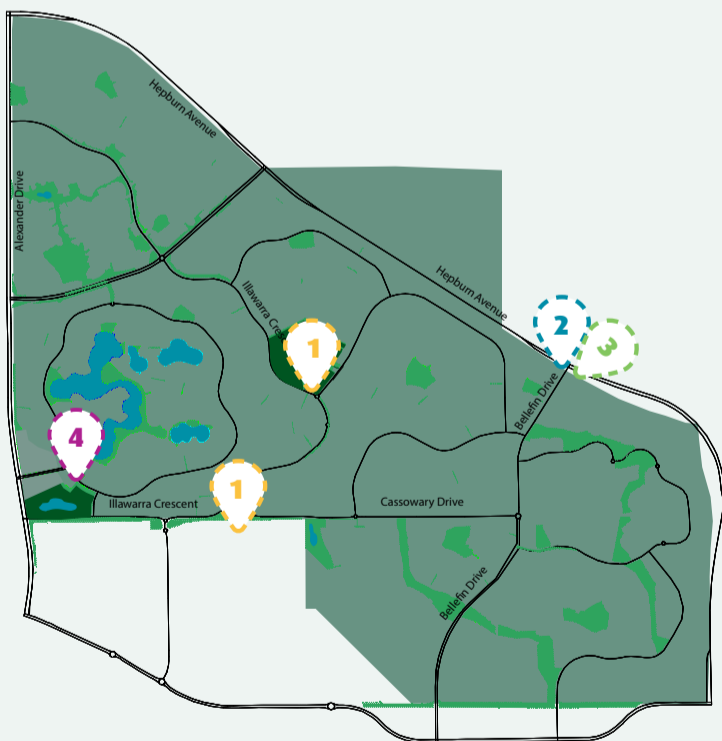
**Priority 2 - Improving movement and access networks**

**Priority 3 - Streetscape maintenance and improvements**

**Priority 4 - Improve access to local social spaces and services**

### Ballajura Local Area Plan 2022/23 Updates

The following map indicates what is being done in the area in support of the priorities in the LAP's second year of operation. These updates will be published on the City's website and updated annually to inform the community.



**a**

The City is working with METRONET to ensure suitable pedestrian and cycling infrastructure connect local communities to station precincts.

**b**

A \$1.9 million roundabout has been constructed at Bellefin Drive and Hepburn Avenue in July 2021.

[Read More Here](#)

**a**

The City has a tree planting program, where Swan residents can request a free street tree for their verge.

**b**

3 new trees will be planted at the new Hepburn Ave and Bellefin Dr intersection.

**c**

The City will undertake a night audit of the street lighting in Ballajura and the results will be passed onto Western Power for action.

[Read More Here](#)

**a**

A survey was undertaken in March 2022 to gauge community preference on a range of playspace related items to inform the development of the Play Space Strategy.

**b**

The \$2 million Swan Active Ballajura project was completed in September 2021.

**c**

The City has prepared a series of concept designs for a proposed Intergenerational Playspace in Ballajura.

[Read More Here](#) [Read More Here](#) [Read More Here](#)

**a**

The newly renovated Ballajura Library and social spaces run events and programs for a variety of groups of people to meet socially.

**b**

The City's Youth Development team support young people in Ballajura through passive outreach and engagement, and delivery of programs like Virtual Reality.

**c**

The City supported a number of community events, including the Ballajura by Twilight event with a community grant.

**d**

Council have initiated a Scheme Amendment to the current zoning for Paradise Quays masterplan area.

[Read More Here](#) [Read More Here](#) [Read More Here](#)