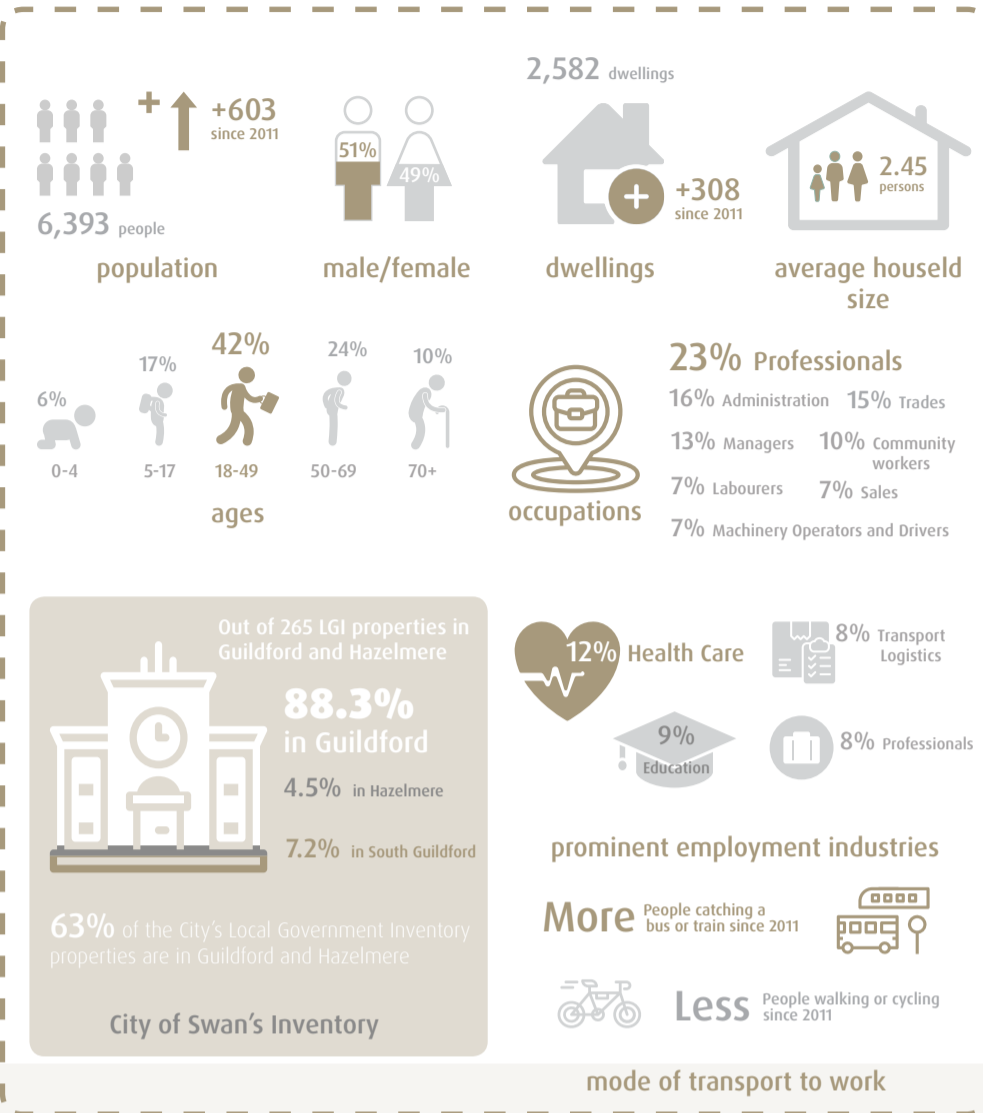


Guildford Hazelmere Local Area Plan - 2022 Updates

Second Year Review

Community Snapshot



Guildford Hazelmere Local Area Plan Priorities



In 2019, community engagement was undertaken to allow the Guildford Hazelmere community the opportunity to identify issues through a consultative process, and for the City to develop priorities for each area.



1,804 total visits



290 comments



5,360 people reached

Adopted in March 2020, the Guildford Hazelmere Local Area Plan outlines the community's priorities, determined by the feedback received throughout the engagement period.



Priority 1 - Promote Guildford's heritage and tourism sector



Priority 2 - Strengthen relationships with our diverse cultural community



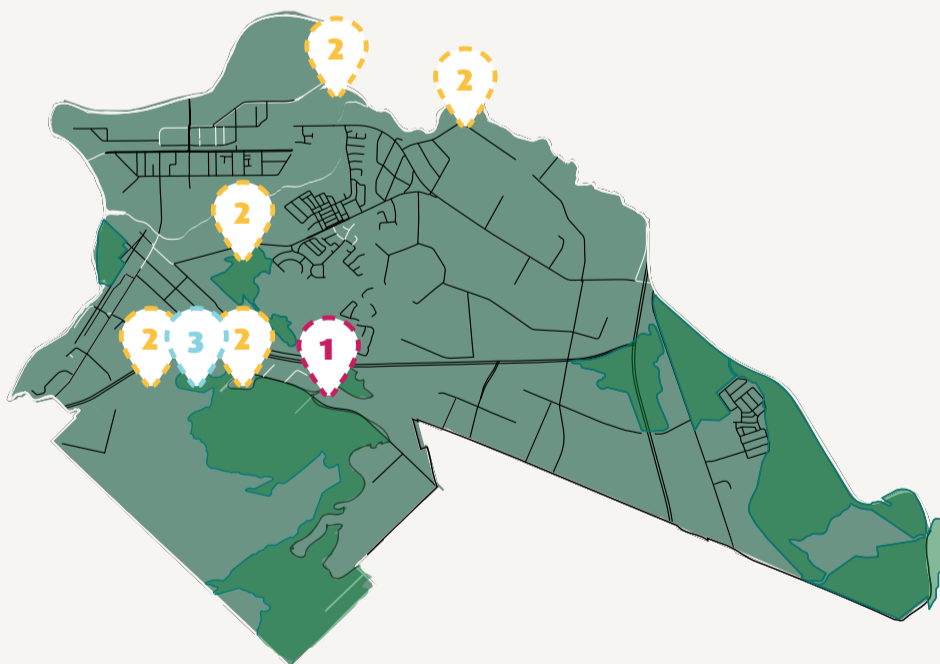
Priority 3 - Provision of adequate bicycle and pedestrian infrastructure



Priority 4 - Protection and Retention of Trees and the Natural Environment

Guildford Hazelmere Local Area Plan 2022/23 Updates

The following map indicates what is being done in the area in support of the priorities in the LAP's second year of operation. These updates will be published on the City's website and updated annually to inform the community.



a

Dual Naming entry signs have been constructed for Guildford to recognise the wider Indigenous significance and heritage of Guildford.

[Read More Here](#)

b

The RAP was endorsed by Council and Reconciliation Australia in March, 2022. The RAP outlines the City's vision for reconciliation and includes practical actions to strengthen respectful relationships with Aboriginal and Torres Strait Islander communities.

[Read More Here](#)



a

A priority in the City's Cycle Network Plan is the Guildford and South Guildford Cycle Link.

[Read More Here](#)

b

The City is investigating options for a temporary pedestrian underpass on the south bank of the Helena River, prior to construction of the replacement Helena River Bridge.



a

The Urban Forest Plan was open for public comment in 2021. Implementation of the plan will include assessing each local area and setting individual targets. A Briefing to Council was held in April 2022 and the City will investigate planting opportunities for each Ward area.

[Read More Here](#)



a

The City's draft Guildford Heritage Area Local Planning Policy is being advertised with drop-in sessions available for the community.

[Read More Here](#)

b

The City of Swan supports the Swan Guildford Historical Society by providing recurrent funding for curatorial and education tourism tour services.