

Midland Local Area Plan Community Consultation Process





Midland Community Consultation

The City undertook two phases of community consultation for the Midland Local Area Plan.

Phase One:

Phase One of the consultation is used to establish what the broad issues are in the Local Area. The City undertook a review of what is happening in the Midland Local Area and used this as a basis of what questions to ask the community.

Collation of Results from Phase One:

The City reviews the feedback from Phase One and collates the submissions into major themes. From these themes, draft priorities are created.

Phase Two:

Phase Two of the consultation is used to advertise the draft priorities to the community and ask them to rank them as per what is important to them.

Collation of Results from Phase Two:

The priorities are ranked as per the community's feedback. These priorities represent what is important to the community and form part of the Local Area Plan.

First Phase of Community Consultation

The role of the first phase of consultation was to go out to the community and get an understanding of the issues in the Midland Local Area. The consultation was undertaken between February 22 and April 3, 2020 with several methods utilised to maximise the exposure to the community. The basis of the community engagement was through an online consultation platform called Social Pinpoint, which used an interactive map to collect the comments. Participants could drag and drop comments onto specific locations in Midland, which enabled the City to geographically pinpoint where the community has concerns, feedback or suggestions. The online consultation was inclusive and transparent as all comments were visible and other participants could respond to comments which created discussions within the community about issues that were important to them.

The consultation was promoted through paid social media posts on the City's platforms, ads in the Echo newspaper on the 22nd and 29th February, emails to stakeholders, promotion by community groups and posters at community facilities. The City created two posters one for the general public, and one for youth in an effort to encourage engagement.

Stakeholders and interested parties were invited to participate in the online consultation through the following sessions:

- A stall at Cale St Festival
- Drop in consultation at Swan Community Care Centre on Funky Fridays
- Drop in sessions at Swan Club
- Drop in sessions at Swan Active Midland
- Drop in sessions at Swan Youth Centre
- Drop in sessions at Centerpoint Shopping Centre
- Drop in Midland library

Unfortunately due to Coronavirus the drop in sessions had to be stopped part way through the consultation period, however the online portal was still accessible.



What did the City ask the community?

The Background Report undertook a review of the Midland Local Area, which identified key issues and activities that the City of Swan was already addressing or actioning. This information informed the key topics that the consultation markers were based on and the leading questions:



Social Services

What do you think about the services, programs, activities, facilities, and events in the Midland Local Area? What needs to be done to support a strong and inclusive community?



Jobs and Shops

What do you think about the employment opportunities in the Midland Local Area? Which shops do you use most and why? How would you like to see the economy of the Midland Local Area develop?



Movement

How do you travel within, to and from the Midland Local Area? Is there anywhere that is hard to get to? What do you like and dislike about the streets, footpaths and transport options?



Health, Well-being and Recreation

Which parks and recreation spaces do you use and why? What improvements would you like to see? How can we make the Midland Local Area a healthier community?



Natural and Cultural Environment

How can the natural environment in the Midland Local Area be improved? How can the community become more sustainable? How do we celebrate the rich cultural heritage of the Midland Local Area?



Other comments

This marker provided a space for any other comments.



Midland Local Area Plan Social Pinpoint Page Stage One: <https://cityofswan.mysocialpinpoint.com/midland-local-area-plan>

358 people viewed the online consultation 1,122 times

405 comments were made by 94 people



This was a significant improvement from the consultation completed as part of the previous Midland Local Area Plan, where 21 community members participated in the workshop.



First Phase of Community Consultation Results

The community raised the following themes in the consultation:



Movement

130 comments

- Road upgrades
- Traffic congestion
- Promotion of cycling and public transport options



Natural and Cultural Environment

78 comments

- Heritage
- Retention and protection of trees, bushland and the river



Health, well-being and recreation

68 comments

- More amenities in parks
- Retention of public open space



Social Services

68 comments

- Concerns about homelessness in Midland
- Services for young people
- Place Activation



Jobs and Shops

41 comments

- Streetscape upgrades
- Retention of the original 'main streets' in Midland

See Appendix A for the full Schedule of Submissions and the City's responses.

From the 405 comments submitted in phase one of the consultation, these five themes were particularly important to the Midland Local Area community. The topics included in these five themes were distilled down into ten priorities.

The following key priorities were collated from the five major themes raised by the community in the first phase of the consultation:

1. Promote and Protect Midland's heritage
2. Ensure Midland has public open space that caters for the community
3. Facilitate streetscape improvements
4. Improve traffic safety and congestion
5. Facilitate the retention of trees, bushland and Midland's connection to the river
6. Create a vibrant place through place activation, community events and community consultation.
7. Ensure there are adequate community services
8. Review the interface between residential and other zones
9. Reduce the perception of crime and antisocial behaviour in the Midland town centre
10. Facilitate cycle and public transport options

Second Phase of Community Consultation

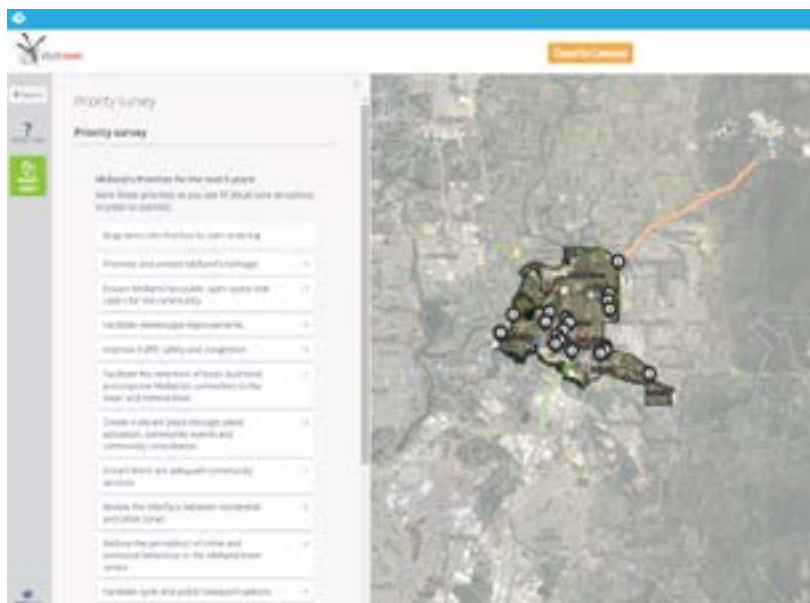
The first phase of the consultation resulted in 405 commentes and the priorities listed above were the major issues raised. In the second phase of consultation, the City advertised these priorities to ensure they aligned with the community expectations and for the community to rank them as they see fit. The consultation was undertaken from the 12th May 2021 until 9th June 2021.

The basis of the community engagement was through an online consultation platform called Social Pinpoint. A survey was created which asked participants to order the priorities created from the first phase of consultation and there was an option to provide additional feedback. This additional feedback and the City's response is included in Appendix B.

The consultation was promoted through paid social media posts on the City's platforms, ads in the Echo newspaper on the 15th and 22nd May 2021, emails to stakeholders and participants from the first round of consultation. Posters, flyers and a copy of the draft Midland Local Area Plan was placed at the City's Administration Centre and the Midland Library.

686 people viewed the online consultation page 288 times

149 people completed the survey



Midland Local Area Plan Social Pinpoint Page Stage two: <https://cityofswan.mysocialpinpoint.com/midlandlocalareapriorities>

Second Phase of Community Consultation Results

The survey responses resulted in several changes including the reordering of the priorities and a wording change for one of the priorities from “Reduce the perception of crime and antisocial behaviour in the Midland town centre” to “Improve community safety and antisocial behaviour in the Midland town centre”. The wording change is due to community feedback received. The final ranking of the priorities is as per the Midland Activities Priorities:

1. Improve community safety and antisocial behaviour in the Midland town centre
2. Ensure Midland has public open space that caters for the community
3. Facilitate the retention of trees, bushland and improve Midland’s connection to the Swan and Helena River
4. Promote and protect Midland’s heritage
5. Improve traffic safety and congestion
6. Ensure there are adequate community services
7. Facilitate streetscape improvements
8. Create a vibrant place through place activation, community events and community consultation
9. Facilitate cycle and public transport options
10. Review the interface between residential and other zones



Woodbridge Cyclepath

www.swan.wa.gov.au



city of swan

City of Swan
2 Midland Square Midland
PO Box 196 Midland WA 6936
9267 9267



This document can be made available in alternative formats on request.

Appendix A: Schedule of Submissions and Responses from the First Consultation

Natural and Cultural Environment				
Entry Statements				
Comment	Like	Dislike	Location	Action/Response
This area of land forms part of the entry statement to Midland and is shameful. Either purchase the land from the owner and change this eyesore to an entrance statement Midland can be proud of, or enforce the landowner to provide beautification to the site.	1		360 Great Eastern Hwy, Midland WA 6056, Australia	The vacant corner lots (Lot 100 and Lot 102), are with the DevelopmentWA area. The Midland Activity Centre Structure Plan 2018 designates this land as part of a mixed use precinct. It is anticipated that this land will be affected by future grade separation of the road/rail in this location. As such the City will not be undertaking any works in a location which may need to be altered by future projects.
This classified public open space should be enhanced as a positive and landscaped entry statement into the Midland City Centre.	7		255 Great Eastern Hwy, Midland WA 6056, Australia	
The Built environment most on public view in Midland over the last 35 years is very grim. Most visitors see Midland driving up Great Eastern Highway which is as ugly a Commercial strip as you could fear to see anywhere in the world. Signage and carparks makes a very distracting and dangerous driving experience. Visually it is cluttered and untidy, and dead outside business hours.			Great Eastern Highway, Midland	
This classified public open space should be enhanced as a positive and landscaped entry statement into the Midland City Centre.	4		Jack Mann Oval Great Eastern Hwy Before William St, Midland WA 6056, Australia	There are no plans to undertake an entry statement project at Jack Mann. There are likely to be impacts on Jack Mann and the surrounding road network as part of Main Roads project to grade separate the adjacent intersection, which is necessary as part of the Orange Route project. The City is not undertaking any works in this location as they may be sacrificial in the short term.
This classified public open space should be enhanced as a positive and landscaped entry statement into the Midland City Centre.	1		2 Morrison Rd, Midland WA 6056, Australia	The City of Swan owns 2 Morrison Road and it is zoned Central City Area, part of the Midland Activity Centre Structure Plan and not for open space. There no plans in place for 2 Morrison Road at this time.
Establish boulevard style entry along Great Eastern Highway from the railway crossing opposite Guildford Grammar along the Highway to Harper St. Regular clean leaves from along fences on Great Eastern Highway and tend verges.			401 Great Eastern Highway, Midland WA 6056, Australia	There is limited space within the verge and medians for a boulevard style planting along Great Eastern Highway. The City undertakes periodic maintenance of road verges to slash any unkempt verges and remove leaf litter, however residents can contact the City on 9267 9267 to report interim issues.
Landscape the section of Great Eastern Highway from the Terrace Rd, Great Eastern			Woodbridge	
Beautify the entrance to Woodbridge House on Third Avenue and Ford St.			Woodbridge	This land is owned by the National Trust Australia.

Highway intersection to Morrison Rd to provide an entrance statement to the Midland	1		111 State Route 51, Midland WA 6056, Australia	The City is not undertaking any works in this location as they may be sacrificial in the short term. There is potential for this lot to be impacted by Metronet undertaking minor road realignments.
Tuohy Gardens have a strong historical significance and provided an excellent entrance frame for entry to midland. Restore the gardens			Great Eastern Hwy Before Tuohy L, Midland WA 6056, Australia	Tuohy Gardens is not a public open space and zoned mixed use residential and commercial and under the control of Development WA.
Change all West Midland signs to Woodbridge, including that of West Midland railway station, and Westrail station announcements. In keeping with the boulevard-style streetscape the entry to Woodbridge include wooden sign at the western and eastern boundaries to Woodbridge. Signs to be of high quality and include the works "Settled 1829" (minus the quotation marks).			Woodbridge	Noted. The train station is named Woodbridge. It is not a priority at this time to install entry signs for Woodbridge.

Natural and Cultural Environment				
Tree planting locations and Tree Retention				
Comment	Like	Dislike	Location	Action/Response
The City should start a verge side competition. If ratepayers request a native waterwise garden on their verge, the City should provide it.	1		Viveash WA 6056, Australia	Noted. The City has a tree planting program where it will plant trees on verges at the request of the adjacent resident if they commit to watering initially to establish the tree.
Landscape pedestrian reserve at the end of Bayley St and replace boulders with pine logs.			Bayley St Ray Marshall Park	The City is not planning any works at this time. The Pedestrian Access Way is landscaped and in good condition.
Remove box-gums and replace with more suitable (native) trees in Chatham St.			Chatham St, Woodbridge	The City generally does not remove mature trees which are of sound structural integrity and good health. If residents are concerned about the health or structure of a tree, it can be reported to the City for inspection. However if trees are removed, they can be replaced with species from the City's tree list.

<p>I own investment property in Bellevue, and parks in Bellevue such as Todd Park need to beautified and watered for some pleasant green area of which Bellevue has none, which looks as Bellevue has been regarded as second class. Also needs a co-ordinated planting of street trees.</p>			<p>Todd Park 24 Helen St, Bellevue WA 6056, Australia</p>	<p>The City has undertaken a coordinated street tree planting program in Bellevue in 2020/21, in accordance with the Bellevue Landscaping Masterplan which was an action of the Bellevue East Land Use Study.</p> <p>The City does not have a water allocation for Todd Park at present. Water allocations City wide are constrained due to the City's growing portfolio of public open space. The City is undertaking an audit of all irrigated areas to ensure water is being used effectively, and water allocations will be prioritised into the future. Todd Park is limited in size for activation and would not be considered a priority for irrigation.</p>
--	--	--	---	---

<p>Lack of trees in Midland/Midvale/Bellevue contribute to increased temperatures and streets that are not appealing.</p>			<p>20 Dudley St, Midland WA 6056, Australia</p>	<p>Agree. The City is going through the process of completing an Urban Forest Plan and will include direction and targets for areas to be revegetated. Canopy and heat mapping was completed as part of the Tree Canopy study. The plan is expected to be publically advertised in 2021/22.</p>
<p>“As noted in the City’s Biodiversity Strategy, in urban environments, land use planning and development is the biggest threat to biodiversity.”</p> <p>Midland Oval properly redeveloped as a Central Park, is the greatest and only opportunity for this policy in Midland. Table 1 Canopy Cover in Midland Local Area shows figures for ‘Midland Local Area’, which includes a Regional Park and Remnant Bushland and Ecological Corridors which are outside Midland. The reality is Midland has virtually no canopy cover left, with a few mature trees in Midland Oval, along Great Eastern Highway, West of Midland (actually Woodbridge), and very few verge trees other than immature new verge planting along The Crescent, and in isolated places such as adjacent to the Old Midland School (Arts Centre).</p> <p>The Heat Island Effect is of particular importance in Midland as it is further from the coast and less blessed by the sea breezes in summer. Many of the areas identified in Figure 10 Urban Tree Canopy are on private land and under threat from infill and other development. Tree canopy over 15m even within the ‘Midland Local Area’ is extremely limited, but it is these mature trees that provide the shade and micro-environmental protection that is vital for micro-climate amelioration and for providing habitat and nesting opportunities for a range of fauna.</p> <p>The approach to Midland Town Hall, in particular, needs to be properly planted with avenue trees along Great Eastern Highway between Morrison Road and the Town Hall. This will improve the appearance of the area, which is currently hot and bare apart from advertising signs, provide shade, and encourage people to walk in this part of the town.</p> <p>Community gardens and other productive interim uses should be facilitated for vacant commercial lots - Tuohy Gardens has been a hoarded up site for years which has benefited no-one and reinforces the down-at-heel image of Midland for every eastbound motorist passing through. This is an asset granted to the people for all time, and should not have been treated as commercial development site in gifting it to the MRA. This error should be recognised and remedied by the Minister.</p>			<p>Generally Midland.</p>	<p>The City is looking at areas where more street trees can be introduced and will have a planting approach as an implementation action of the Urban Forest Strategy. It is understood that Midland is an important area/community priority for street tree planting.</p> <p>As mentioned above, the City has recently carried out a tree planting project in the Bellevue area which included consultation with the local community.</p> <p>Stage 1 of Weeip Park in New Junction included over 100 new trees and additional planting will be done as Stage 2 is completed. A total of 650 trees will be planted in New Junction.</p> <p>Tuohy Gardens is not a public open space and zoned mixed use residential and commercial and under control of Development WA.</p>

Midland is hot in summer - it needs street trees on every street so that people can walk in the town during summer, to provide urban habitats, traffic calming and to generally reduce the urban heat island that our over-paved town creates. Various car parks in Midland such as on Stafford St, Centrepoint and Midland Railway Station, Bunnings, where existing shade trees were removed and Midland Oval carpark (Morrison Road) seem to be exempt from any requirement to provide shade trees. All of these should be required to re-plant with shade trees.			General Midland.	Continued.
Plant trees here please - it's the gateway to Midland old town and to all the rest further east along the highway. It's hot in summer. It will encourage people to look at cars..	2		332 Great Eastern Hwy, Midland WA 6056, Australia	
More street trees	2		11 The Avenue, Midland WA 6056, Australia	
More native tree planting			18B Aquaviva Cir, Viveash WA 6056, Australia	
Trees increase value: Perth-based research* found that a broad-leaved tree located on a street verge in front of a home increases the median property price by about \$16,889	1		17 Poynton Ave, Woodbridge WA 6056, Australia	
Trees, Trees, TREES. Such a simple and cost effective way to improve the value and enmity of a suburb. Every verge that can take a tree should have a carefully selected native tree that reflects Midland's heritage and proximity to nature. Not to mention the environmental benefits such as reducing the heat island effect and providing food and shelter for birds, insects and other animals. Trees increase value:	1		380 Great Eastern Hwy, Woodbridge WA 6056, Australia	
This big tree must be preserved. There is so little canopy in this area.	1		16 Blackburn St, Bellevue WA 6056, Australia	
The City of Swan should plant more native trees including marris as street trees on verges which provides food for the Carnaby Cockatoos and , planting of median strips with attractive herbage and flowers. There should be less use of weed killer and herbicides Midland lacks shade and is too hot to walk around in summer. It needs trees and green public spaces	1		293 Great Eastern Hwy, Midland WA 6056, Australia	

More street trees need to be planted and more parks. So many units being built. Nowhere for children to play and more barbecues are needed.			General comment however pin dropped on Midland Oval.	Continued.
The City must embark on an ambitious tree planting program in Midland and streets. We need a lot more public open space. We need Tuohy gardens to be given back to the people for a park. The Midland Oval must not be developed. It should be a central park. Heritage cycle track or where it once stood must be retained. An ambitious tree planting program for the Swan river foreshore in Viveash is desperately needed.	2		Spring Reserve 24 Spring Ave, Middle Swan WA 6056, Australia	
More flowers at all roundabouts with more colour			Great Northern Hwy Before Bishop Rd, Middle Swan WA 6056, Australia	
I hate walking in the hot sun on treeless streets. I don't believe we need more roads or carparks. We are on the cusp of driverless cars.	2		20 Dudley St, Midland WA 6056, Australia	
Trees should be put into areas such as car parks which are hot and contribute to the head island effect.			General comment.	
				Noted. The State Planning Policy Residential Design Codes 7.3 encourages trees in car parks to provide shade for pedestrians.

<p>Dwellings and retention of trees: The Society supports the encouragement of quality design in Midland. Ad noted the area has a high percentage of rental properties, consistent with the early development to service the railway workers in the Goldrush/Federation period.</p> <p>The tendency to build to the Lowest Common Denominator creates a sub-suburban infill pattern imposed onto the quarter-acre or similar sized original lots. This typically results in a brick-paved tree-less wasteland with four or five or more low amenity houses jammed onto it.</p> <p>The City of Joondalup is considering Draft New Development Standards including a tree or green area requirement, and The Society suggests that the City look at adapting such a policy before Midland is irredeemably blighted. See below:</p> <p>Properties in all areas would be required to have a landscape area as a percentage of the lot area:</p> <table border="1" data-bbox="129 869 715 1115"> <thead> <tr> <th>Lot area (square metres)</th> <th>Minimum landscape area</th> </tr> </thead> <tbody> <tr> <td>0-300</td> <td>20%</td> </tr> <tr> <td>301-400</td> <td>25%</td> </tr> <tr> <td>401-500</td> <td>30%</td> </tr> <tr> <td>500+</td> <td>35%</td> </tr> </tbody> </table> <p>Requirements for a percentage of the property to be kept aside as deep soil areas to enable the planting of trees would apply to all types of dwellings.</p> <p>Additional specific requirements would apply to the planting of trees (relative to the size of the landscape area, not just the size of the property):</p> <ul style="list-style-type: none"> • 1 small tree for every 20 square metres • 1 medium tree for every 60 square metres • 1 large tree for every 100 square metres • A combination of the above <p>Incentives would also be introduced to retain trees. These would allow a reduction in the amount of landscape area required if a mature tree is retained.</p> <p>Retention of trees would be enforced in perpetuity through conditions of planning approval</p>	Lot area (square metres)	Minimum landscape area	0-300	20%	301-400	25%	401-500	30%	500+	35%			General Midland.	<p>Agreed. The City is investigating how to encourage tree retention on private land through the draft Urban Forest Strategy.</p> <p>There are other planning instruments such as State Planning Policy 7.3 Residential Design Codes which provide built form and landscaping incentives to retain existing trees.</p>
Lot area (square metres)	Minimum landscape area													
0-300	20%													
301-400	25%													
401-500	30%													
500+	35%													

The 120 year old oak tree should be acknowledged and preserved.			1 Cale St, Midland WA 6056, Australia	<p>Noted. The City does encourage the retention of mature trees. Some of the trees are located in the area that is controlled by Development WA and where the new train station is being relocated to which is likely the trees will be removed. These comments have been passed onto Development WA.</p> <p>The trees that are on City of Swan controlled land can be considered for their heritage value when the City reviews the Local Heritage Survey in 21/22.</p>
Protect the old native trees (Marris and Wandoos) on Railway Parade.			172 Railway Parade, Midland WA 6056, Australia	
Recognition and protection of the amazing old growth Flooded Gum trees in Midland. Some are probably hundreds of years old.			19 Dudley St, Midland WA 6056, Australia	
<p>Three Mature London Plane Trees planted in the 1930's along Railway Parade are located on the proposed site of the Midland Station.</p> <p>Should they face the axe, would be great if the Council could investigate relocating them to other sites in Midland where the trees can continue to grow and provide shade.</p> <p>Watertank Park at the former WAGR Workshops could be an option.</p>	4		70 Railway Parade, Midland WA 6056, Australia	
These trees are the last remnants of the stables and must be preserved.			16 Blackburn St, Bellevue WA 6056, Australia	

Natural and Cultural Environment				
Water management				
Comment	Like	Dislike	Location	Action/Response
Very disappointed to learn that the new bore drilled in Todd Park is to water other Suburbs within the City of Swan. I know that the Bellevue Residents and Ratepayers Association has been advocating for water in that park for many years now. Bellevue forgotten yet again! Please remember Bellevue!			27 Helen St, Bellevue WA 6056, Australia	The City is aware that there are concerns in the community that Todd Park is not irrigated. The City does not have a water allocation for Todd Park at present. Water allocations City wide are constrained due to the City's growing portfolio of public open space. The City is undertaking an audit of all irrigated areas to ensure water is being used effectively, and water allocations will be prioritised into the future. Todd Park is limited in size for activation and would not be considered a priority for irrigation.
The residents of Bellevue were excited when the new bore was being drilled in Todd Park. "Finally the Suburb is going to be upgraded with green open spaces". Unfortunately the bore in Bellevue is to water other areas in the City of Swan. NO WATER ALLOCATION OR UPGRADE TO BELLEVUE!			27 Helen St, Bellevue WA 6056, Australia	
Water efficiency: The city controls a large area of the Metropolitan groundwater resources. It is therefore incumbent upon the City Engineering Department to improve its management strategies.			General Midland	Noted. The City prioritises water allocations and is undertaking an audit of all irrigated areas.
Divert Bayley St and First Avenue street drainage into Blackadder Creek (previously named Woodbridge Creek). Beautify the same.				Noted. The City does not currently have any plans for the drainage via First Avenue at this time.
Fill in and or pipe First Avenue road-way extension drain.				

Natural and Cultural Environment				
Tourism				
Comment	Like	Dislike	Location	Action/Response
The Midland Railway Workshops should house a Railway Museum and should also become a live theatre space.	2		60 Yelverton Dr, Midland WA 6056, Australia	Noted. The workshops are located within the Development WA area. The City's Tourism and Development Strategy recommends that as the redevelopment of the workshops progress the City should investigate tourism related opportunities. There is a current EOI in the market for these spaces, however Council is yet to be handed these assets so therefore the premises is not currently within Council control.
If midland had a museum that was easily accessible and cheap to enter it would improve the area	1		1/8-12 Stafford St, Midland WA 6056, Australia	
If we had a big museum built in midland it would help employment			The Crescent After Stafford St, Midland WA 6056, Australia	
we need a Railway heritage Interpretation centre			6 Centennial Pl, Midland WA 6056, Australia	
The railway workshops are losing their connection to their history and becoming just a bunch of old looking building used by hipsters. There should be space made available for activities that reflect the activities and working class people who worked there. e.g. Vintage Machinery clubs, a men's shed, vintage car restoration society, blacksmith etc.			6 Centennial Pl, Midland WA 6056, Australia	

Turning the old Midland Court House into a heritage museum for Midland and 6056 and home for the Midland and Districts Historical Society would demonstrate the council's support for local history.	5		49 Helena St, Midland WA 6056, Australia	The Midland Court House can be used as a function space. City supports community groups who want to organise historical events and can assist groups applying for funding. The City does consistently applies for funding appropriate to specific actions that meet the relevant criteria.
The Midland and Districts Historical Society as its vision would like to see the promotion and acknowledgment of the history of Midland and surrounding 6056 suburbs throughout the establishment of a museum/interpretive centre in conjunction with the City of Swan Local History Collection.			312 Great Eastern Hwy, Midland WA 6056, Australia	Community assets are available to all community groups/associations - recurrent bookings for spaces can be made on-line.
The City needs to establish and hold historical events. Seek funding from State and Federal funding as well as Lottery West.	3		48 Sayer St, Midland WA 6056, Australia	
In response to comment above: Yes, but support the Midland Historical Society who already holds events. They also need a home asap.			48 Sayer St, Midland WA 6056, Australia	
I would like the City to investigate investing in a solar farm and battery for subsidised power to ratepayers. I would like to see some "Welcome to City of Swan" or "Welcome to Midland" signs. I would like to see signs like " You are entering Noongar country" or similar. Railway museum in the railway workshops. Encourage old heritage buildings to be reinstated as they were originally built	2		11B Aquaviva Cir, Viveash WA 6056, Australia	The City is currently investigating solar farming in order to reduce costs to the City. Individual subsidies have not been considered. The City does not currently have any plans to entry statements in Midland. Due to the multiple major infrastructure projects and that the majority of roads leading into Midland are owned by Main Roads, it would be difficult to put in entry signs at this point in time. The City offers rate subsidies to Heritage Listed properties to incentivise the upkeep of the property.
The contribution made by the Italian, Croatian and Polish community to Midland should be acknowledged and celebrated.	5		60 Helena St, Midland WA 6056, Australia	The City has several community events across the year which celebrate the multiculturalism of the City of Swan. The Tourism trails in the Swan Valley also recognise the history of communities in the area.
The old Sale Yard site that played an integral role for the primary produces should be recognised for the role it played in the history of Midland. The Public Art contributions of \$500,000 should be utilised on that area to acknowledge the history of that region.			Clayton St Before Lloyd St, Midland WA 6056, Australia	Noted. The City would encourage public art to reference the history and local character of the area.
Woodbridge can provide a historical tourist link and tourism trail from Guildford, to Guildford Grammar School, Woodbridge House, to Woodbridge, the old jetty and swimming hole area, the early settlement cottages located on the southern side of the railway line, the railway Workshop area and into the very heart of Midland.			Woodbridge	Noted. Woodbridge is part of one of the four self-guided heritage walking trails via https://www.swan.wa.gov.au/Your-Community/Activities-Leisure/Cycling-walking-trails
Woodbridge: Tourism opportunities abound, particularly associated with the riverside Ray Marshall Park, which provides the greatest public access along the Middle Swan, other than by water.			Woodbridge	Noted.

Natural and Cultural Environment				
Heritage				
Comment	Like	Dislike	Location	Action/Response
Ensure that Midland's unique heritage is at the forefront of this development			Midland Oval 86 Morrison Rd, Midland WA 6056, Australia	The City has advertised draft local planning policies: Midland Activity Centre Design Guidelines and Midland Oval Redevelopment (New Junction). The guidelines include provisions for heritage.
<p>Midland Gold Boom period verandahs</p> <p>Midland's original architecture around its primary triangle still largely survives, except for the wholesale demolition of the verandahs. The Society believes that restoration of the verandahs in old Midland Junction, to the shops on Great Eastern Highway, Helena Street and the Great Northern Highway, adjacent to the Town Hall is required positive action to rectify the decades of Planning Blight of this area.</p> <p>Midland town centre has potential to compare favourably with Fremantle or Kalgoorlie as a fine Gold Rush period town centre, with the Town Hall as its centrepiece. The Council the State Government and the business community must now take up their roles, but leadership must come from Council.</p>			General Midland	<p>The objectives include:</p> <ul style="list-style-type: none"> • Development of heritage places accord with the relevant statement of significance and level of protection or management identified in the City of Swan's Local Government Inventory or the State Register of Heritage Places. • Development promotes and facilitates appropriate and sensitive adaptive re-use of underutilised heritage buildings and ensures high-quality architectural responses for additions and infill development, to allow ongoing use and enjoyment of heritage places. • Development, including proposed demolition, does not adversely affect or detract from the significance of a heritage place. • Development proposals and planning decision making is consistent with best practice in heritage conservation and the principles of the Burra Charter. <p>This is recognised in the Midland Redevelopment Place Making Strategy undertaken with Community for the redevelopment of the site and forms a part of the vision contained within the Business Plan endorsed by Council .</p>

Midland's original architecture around its primary triangle still largely survives, except for the wholesale demolition of the verandahs. The Society believes that restoration of the verandahs in old Midland Junction, to the shops on Great Eastern Highway, Helena Street and the Great Northern Highway, adjacent to the Town Hall is required positive action to rectify the decades of Planning Blight of this area.	1		3 The Avenue, Midland WA 6056, Australia	The heritage significance and their protection is set by the City's Heritage List and Local Government Inventory. The City owns several properties and it will be a Council decision if these properties are demolished.
Midland town centre has potential to compare favourably with Fremantle or Kalgoorlie as a fine Gold Rush period town centre, with the Town Hall as its centrepiece. The Council the State Government and the business community must now take up their roles, but leadership must come from Council.			3 The Avenue, Midland WA 6056, Australia	In the interim, the City has engaged a heritage consultant to undertake 36 properties across the Midland Local Area which were nominated in 2020 as per the 3 June, 1 July, 23 September and 21 October, Council meetings. A full review of the City's Local Heritage Survey will be undertaken in 21/22.
Retaining the homes at 2, 5, 6 and 7 The Avenue and incorporating them into the New Junction will demonstrate Midland's heritage.	9		4 The Avenue, Midland WA 6056, Australia	
We hope the unnamed road reserves within the New Junction Project honour people of sporting significance to the site or Midland. Charles Gast, champion Midland Junction footballer who was killed in World War I. Bruce Yardley, champion cricketer from Midland who played for Australia and likely the most successful cricketer to have been breed on that oval in terms of a career and number of tests for Australia. His dad was also groundsman at Midland Oval for many years.	4		90 Morrison Rd, Midland WA 6056, Australia	Noted. The naming of the streets in New Junction has already been undertaken. For more information visit the New Junction website via https://www.newjunction.com.au/news/2020/the-hidden-history-of-street-names

<p>There has not been enough consultation with the community consultation especially about the Midland Oval Development which the community has had strong views about for decades, about a better heritage strategic plan for Midland which includes how Midland’s heritage homes and buildings can be better protected as heritage assets and incorporated into a wonderful mix of old and new for the future.</p>	3		43 The Crescent, Midland WA 6056, Australia	<p>The Midland Oval Redevelopment Masterplan was advertised in April 2013.</p> <p>The Midland Activity Centre Structure Plan was advertised in June 2015</p> <p>The community consultation undertaken was extensive, as reported to Council in a public report in January 2017.</p>
<p>Midland Oval Precinct: Lack of Community Consultation</p> <p>The Business Plan should be assessed against the views of the immediate stakeholders in the City of Swan; the ratepayers, residents, local businesses and the local community. It is a long term project and the interests of transient developers and large retailers should not be the primary considerations. Rate income matters, but not at the cost of community</p> <p>The community has attempted to consult at every opportunity, but for over twenty years, the Shire/City of Swan has been clearly locked into the MORM agenda, and has ignored, avoided and silenced the community who have called constantly for retaining at least the Midland Oval and Velodrome.</p> <p>The City claims it has carried out Public Consultation, but at reference Group and Public Consultation, discussion was only permitted within the constraints of the MORM proposals at the time. The City has reportedly spent \$212,000 in the last two Financial Years on Consultation on the MORM, but without allowing any discussion of the option of retaining Midland Oval.</p> <p>It is difficult to comment in detail as the various drawings show different layouts. Figure 17 p36 shows one layout but on the next page 37, figure 188 shows “Weeip Park Design “ which is not consistent.</p> <p>What is startlingly clear and repeatedly put by members of the public is that the Oval is our oldest and most fundamental public asset and it’s not for sale. Secondly and equally importantly, Midland has a massive deficit of Public Open Green Space, so even with the Oval fully restored to its 5 Hectares area we still only achieve 1.6% GPOS, and with the MORM plan that drops to 0.6% for the suburb of Midland. We cannot afford or contemplate losing one square metre of that Public Recreation Reserve, dedicated to the people by Woods in 1891.</p>			Midland Oval	<p>The redevelopment of the site was surveyed to all ratepayers and residents within the City of Swan with majority support of 65% from all Local Place Areas as well as an overall support of 65%.</p> <p>All redevelopment activities are subject to Council approval.</p> <p>The Midland Oval Design Guidelines were advertised 9th May until 31st May 2020.</p> <p>Further advertising for stage 1 and stage 2 of Weeip Park was also undertaken in 2020.</p>

<p>This has been a long term slow motion train wreck and despite all the warnings from the community over more than 25 years the project is still rushing headlong into the abyss.</p> <p>Midland Oval Precinct: Triple Bottom line disaster?</p> <p>A responsible Business Plan should succeed on the Triple-Bottom-Line; it should be positive Economically, Environmentally and Socially. The MORM (“New Junction”) is aimed for failure on all three indicator levels.</p> <p>The Business Plan (the “Plan”) is based on the MORM.</p> <p>1 Economically the cost to the ratepayers is very high. For Scenario 1, City debt would reach \$90 million after ten years, in addition to moneys already spent and not shown in the Plan1. The main income to service the debt is shown as rates at \$4.5 million pa, which is a low rate of return, little more than the interest on \$90M. And even that is based on optimistic, best-case scenarios that will probably not eventuate.</p> <p>2 Environmentally, the City under the MORM proposals will remove the only viable park in Midland, reducing the residents’ opportunity for fresh air and recreation, increasing the Urban Heat Island effect, leaving the Midland Regional Centre with no viable green space or habitat for birds and other flora or fauna. The current POS in Midland is about 2.84% available’, post MORM the POS in Midland is calculated to drop to 1.91% ‘available’. Green POS as required under Liveable Neighbourhoods will be in turn a small fraction of this fraction.</p> <p>3 Socially the MORM threatens the survival of the Midland Oval, the velodrome and 120 years of community engagement, celebration, entertainment and recreation and the potential loss of 13 heritage homes around the Midland Oval. The Heritage value of the Recreation Ground Reserve cannot be overstated, and the policy of demolition, over the last thirty years cannot hide it. Midland will suffer at least twenty years of Planning Blight under the MORM, as has already commenced with the building of the “road” and six-foot fencing across Midland Oval and the Velodrome, rendering the place almost useless probably for another decade.</p> <p>Even if the ratepayers of Midland were to be rewarded with \$90 million in rate-rebates, instead of a massive debt, this plan would still represent a disastrous loss to the community and the town.</p>				<p>Noted. New Junction (Midland Oval redevelopment area) will create a boost to the local economy with create 750-1000 new homes, 12,200 sqm of dining space, 25,000 sqm retail space, 90,000 sqm and generating \$690 million worth of new construction, \$2.2 billion worth of economic output and 4000 new jobs. Furthermore, 650 trees will be planted and Weeip Park is a public open space for the community.</p>
<p>The projected infill requirements for multistorey apartments without proper public open space and community amenity will result in future slums and not a safe and healthy place for families or the elderly to live</p> <p>also the projected infill requirements to make Midland more densely populated will not be met given the economic outlook over the next 20 years and instead Midland will end up with more heritage homes demolished and empty blocks.</p>	2		10 Morrison Rd, Midland WA 6056, Australia	

<p>LGI and Heritage Lists: The Municipal Inventory needs to be restored to its heyday, when Cr Roni Oma worked with the community to collate the places of significant heritage. In recent years the MI registration of properties has lapsed. The Midland Society believes many heritage buildings have not even been assessed for registration on the MI and then have been subsequently demolished. The Midland Society wants more protection of heritage homes and buildings in Midland.</p> <p>The Society can assist in preparing Statements of Significance for many properties including heritage homes that are currently not provided appropriate significance on the MI. The Society will work with the City to restore the status of the places that deserve it.</p>			<p>General comment</p>	<p>The protection of a building is categorised in the City's Heritage List and Local Heritage Survey (previously Municipal Inventory). The City will be undertaking a review of the Local Heritage Survey in 21/22 where community consultation will be undertaken. These properties will be considered at this time.</p> <p>In the interim, the City has engaged a heritage consultant to undertake 36 properties across the Midland Local Area which were nominated in 2020 as per the 3 June, 1 July, 23 September and 21 October, Council meetings.</p>
<p>We need to respect and preserve the few remaining historic buildings in Midland linking our present with our past. Don't demolish everything for the sake of a clean slate for commercial properties.</p>			<p>50 Sayer St, Midland WA 6056, Australia</p>	
<p>The gold rush era building along great eastern highway should be protected and restoration encouraged</p>	<p>1</p>		<p>285 Great Eastern Hwy, Midland WA 6056, Australia</p>	
<p>Need to preserve the historical landscape of the old Bellevue town and in particular the old station masters buildings, the scout hall and the Veteran car club buildings</p>			<p>18 Helen St, Bellevue WA 6056, Australia</p>	

All demolition or change in land use around and across the road from the 1893 terraces should be prohibited to ensure the context and character of these houses is retained particularly as many of the houses have their own history. It would be obscene to have the terrace houses lost or overshadowed on all side by high density development. This should be an historical precinct			35 Byers Rd, Midland WA 6056, Australia	Continued...
This end of Byers road forms a clearly distinguishable historical and cultural enclave. The terrace houses date back to before there was a Midland Junction or even the Municipality of Helena Vale (~1893). The houses across the road reflect later development including 32, 40, 38 Byers road (reflecting the time when all homes within 1 mile of the post office had to be brick), 30 and 34 reflecting the interwar building. Further demolition or dismantling of 39 should be stopped.	1		25 Byers Rd, Midland WA 6056, Australia	
The Old Great Northern Hwy precinct is tired and screaming for attention so why not make it an historic precinct and add to its street appeal with potted street trees, historic colours, historic street lighting and fixtures	3		114 Old Great Northern Hwy, Midland WA 6056, Australia	
Heritage homes and buildings in Midland should be recognised and promoted by the City of Swan as community assets that do and will positively contribute to the built and social environment of Midland The City of Swan should encourage more owner occupier homes should be encouraged in Midland rather than planning for high rise short term rentals			41A The Crescent, Midland WA 6056, Australia	
Heritage housing should be protected on the MI and retained to be included in any infill residential development so that Midland becomes an interesting a mix of old and new The City of Swan should place a value on all of Midland's heritage assets especially when it is evident that the heritage in Guildford attracts so much economic activity	2		334-336 Great Eastern Hwy, Midland WA 6056, Australia	
Current City of Swan heritage and development policies are resulting in speculators purchasing Midland's heritage homes on big blocks, demolishing the character heritage homes and leaving vacant land which is resulting in urban blight because of land banking Midland heritage is more than its Old Great Northern Highway or the Railway Workshops. It's heritage is the history of the townspeople and the homes they lived in that still exist in Midland			Midland Police Station, 32 Spring Park Rd, Midland WA 6056, Australia	

<p>here should be better City of Swan policies for nomination, assessment and inclusion of 100 year old and heritage homes on the local government municipal inventory in line with Burra Charter</p> <p>the City of Swan heritage policy should be changed so that the City of Swan nominates heritage and 100 year old homes for inclusion on the Municipal Inventory</p>	2		94 Morrison Rd, Midland WA 6056, Australia	Continued.
<p>The great Heritage value of the Gold Rush period architecture of the Midland Retail Heart should be restored. With the two-storey verandas replaced we will restore Gold rush character similar to Kalgoorlie's Hannan St.</p> <p>This will encourage Retail and Tourism and assist to revive the Planning Blighted heart of Midland.</p> <p>It will require leadership from the Local and State Government, who were responsible for the policies that led to removal of the veranda's</p>	4		15 Old Great Northern Hwy, Midland WA 6056, Australia	
<p>The last remaining kiln from the original Whiteman Brick operated by Lew Whiteman must be retained and included on the Council's Heritage List.</p>	5		102 Great Northern Hwy, Middle Swan WA 6056, Australia	
<p>The Viveash Memorial must be retained and put into the Council's Heritage List.</p>	4		28 Eveline Rd, Middle Swan WA 6056, Australia	
<p>Built in 1908 and home to George Boag Bond Jnr who was a crew member on Halifax bombers flying raids over Germany during the second world war.</p>	1		45 Sayer St, Midland WA 6056, Australia	
<p>Built in 1908 and home to Leonard Penno, who painted the Honour Rolls in the Town Hall, and George Boag Bond, the Anzac hero who lost both his eyes to gunshot wounds in France two weeks before Armistice. Should be put on Municipal Inventory so it can be retained and incorporated into the Midland Oval Redevelopment.</p>	1		43 Sayer St, Midland WA 6056, Australia	
<p>Built in 1907 and home (referring to 22 Keane St) to steam train diver and war hero William Henry Hackfath (Distinguished Conduct Medal 1918). Should be put on Municipal Inventory so it can be retained and incorporated into the Midland Oval Redevelopment.</p>	1		8-10 Old Great Northern Highway, Midland WA 6056, Australia	

Built in 1907 and home to George 'Robby' Robertson, star player for the Midland Junction Football Club in the WAFL. Should be put on Municipal Inventory so it can be retained and incorporated into the Midland Oval Redevelopment.	1		24 Keane St, Midland WA 6056, Australia	Continued.
Built in 1908 and home to Arthur Lynch and family from 1912 to 1949. Should be assessed for the Municipal Inventory.	1		41 Sayer St, Midland WA 6056, Australia	
Built 1907 and home of the grandmother of international cricket umpire Don Weser. Should be put on Municipal Inventory so it can be retained and incorporated into the Midland Oval Redevelopment.	1		20 Keane St, Midland WA 6056, Australia	
Built in 1936 and home to Herman Lange (referring to 25 The Crescent), butcher, and brother of football legend Carl Lange. Should be put on Municipal Inventory so it can be retained and incorporated into the Midland Oval Redevelopment.	1		20 Keane St, Midland WA 6056, Australia	
Built in 1936 and home to Herman Lange (referring to 25 The Crescent), butcher, and brother of football legend Carl Lange. Should be put on Municipal Inventory so it can be retained and incorporated into the Midland Oval Redevelopment.	1		19 The Crescent, Midland WA 6056, Australia	
Built by Percy Broadhurst in 1908, the son of famous entrepreneur and MLC Charles Broadhurst. This house should be assessed for the Municipal Inventory.			32 Byers Rd, Midland WA 6056, Australia	
Childhood home of Mary "Lallie" Alice Ross (born Midland, 1905) who married Herbert "Nugget" Coombs (born Kalamunda, 1906), the first Governor of the Reserve Bank of Australia. House should be included on Municipal Inventory.			30 Byers Rd, Midland WA 6056, Australia	
The house was built in 1902 by George and Seabright Diffen. Their son Eric served overseas in the first and second world wars and obtained a pilot's license and took the first aerial photograph of Midland Junction from his own De Havilland Moth biplane. A fine example of a brick and iron federation house and garden fast disappearing in Midland. Should be included on the Municipal Inventory.	1		41 Byers Rd, Midland WA 6056, Australia	
Built in 1897 and home to Percy Miller (referring to 41 The Crescent) who was involved in Western Australia's first railway disaster and participated in the Gallipoli Landing and Lone Pine. Should be put on Municipal Inventory so it can be retained and incorporated into the Midland Oval Redevelopment.			39 The Crescent, Midland WA 6056, Australia	
Built in 1897 and home of Arthur Cooper, the son of Charles Cooper, the engineer who constructed the Midland Railway line. Should be put on Municipal Inventory so it can be retained and incorporated into the Midland Oval Redevelopment.			29 The Crescent, Midland WA 6056, Australia	

<p>Recognition of Heritage Status and Precinct upgrades</p> <p>In 1997 a ' Charette' was held with the community voting in favour of the (then West Midland) precinct declared a Conservation Precinct. In 2001 the Woodbridge Ratepayers Association Incorporated was formed as result of founding members' actions in having "West Midland" renamed "Woodbridge" (for its 1829 Governor Stirling roots).</p> <p>A 'Vision Statement' was submitted to the Swan City Council on 26 March 2002 (copy attached). The submission proposed a number of improvements that would enhance Midland City. Some of these have been implemented.</p> <p>The region encompassed by the City of Swan is diverse. It is left somewhat undervalued by the Perth community. Woodbridge and Midland have assets to rival or exceed those found in other jurisdictions of Greater Perth: the Swan and Helena Rivers, the foothills of the scarp,</p> <p>Guildford Grammar and Governor Stirling Senior High School, Woodbridge Play Space and new Boardwalk style jetty at Woodbridge Riverside Park, public and private hospitals and a new university campus. It has excellent public transport and road access to all points of the compass- but especially to the Swan Valley, and to the south, north and east. The precincts are to be celebrated and respected.</p> <p>A long term vision is necessary to ensure current developments do not impede those of the future. The history of the region should be sustained as a point of difference and pride. Here we suggest some short to medium term policies and programs and point to a future in which the population may double and demand for public, passive recreation and for commercial facilities will likewise increase.</p>				<p>Noted. The City is currently completing a review of the Guildford Conservation Policy, once this is completed the Woodbridge Conservation Review will be undertaken with community consultation.</p>
<p>Woodbridge Conservation Precinct: The Society supports these intentions, whilst remaining conscious of the need to foster good design, regardless of fashion or stylistic trends. The Society offers the suggestion that proponents are encouraged to obtain the services of qualified and trained professional designers.</p>			<p>Woodbridge</p>	
<p>Consistent planning and development decisions on Woodbridge, particularly north of the railway line. The conservation area guidelines appear to be little more than a suggestion at the moment. While I acknowledge the need for infill around public transport hubs, the infill should be of a high quality and sympathetic nature to representative housing stock. Road surfaces are deteriorating and drainage non-existent. Invasive non-native trees on verges are destructive and there is a general reluctance to remove trees which are causing concerns.</p>			<p>Woodbridge</p>	
<p>Enforce planning consistency with the Woodbridge Conservation Plan.</p>			<p>Woodbridge</p>	
<p>Invite Woodbridge property owners to share their views on a heritage classification for Woodbridge</p>			<p>Woodbridge</p>	

Include Woodbridge in the Heritage page list of the City of Swan webpage.			Woodbridge	The City is reviewing the website to consider the inclusion of Woodbridge on the History and Heritage page.
Install a Woodbridge locality and points of interest map at an information bay in a number of locations in a region.			Woodbridge	Noted. At this time this is not a priority of the City but may be considered in the future.

Natural and Cultural Environment				
Land use and planning proposals				
Comment	Like	Dislike	Location	Action/Response
Rezone this land as high density infill housing. Purchase of land will be cheaper than midland oval and loss of history will be less and this is better location in terms of access to roads and public transport and shops.	1		9-15 Robert St, Bellevue WA 6056, Australia	This land is currently industrial. The City has strategically located higher density housing near amenities such as public transport.
Development of residential blocks should be considered. Previously there has been ideas on 'gated' community thrown around for small lot housing but I believe we should open it to 500-700m2 block sizes in keeping with surrounding areas			1 Wangalla Rd, Koongamia WA 6056, Australia	A planning approval through the Joint Development Approval Panel was approved in 2016 for 121 grouped dwelling and a subdivision approval was given in 2019. Lot sizes range from 300-400 sqm.
The original town centre along Old Gt Northern Hwy needs revitalization. Parking is an issue, even City of Swan and Landgate staff park in private parking behind Midland Village taking away from customers. No amount of complaints have resolved issue, number of shops have now moved out.	1		67 Morrison Rd, Midland WA 6056, Australia	There are low vacancy rates of shops on Old Great Northern Highway. The City does assist prospective businesses find a location. The City encourages staff to use public transport and in the last year with Covid19 businesses have adapted with staff working from home which has significantly reduced the parking requirements.

<p>Where is the artwork in Bellevue from the contributions from all these large developments along Clayton St? Is Bellevue being short changed yet again?</p>			<p>36 Wells St, Bellevue WA 6056, Australia</p>	<p>Contributions are expended in accordance with POL-LP-1.10 and POL-C-142. The City must expend the funds within a reasonable timeframe of collection, must utilise an artist that meets the criteria of “professional” under the policies, and expends the funds within the Place area that they are collected.</p> <p>To date the City has expended funds through selecting key sites with high exposure, public interaction and community engagement opportunities. Funds in the Midland Place area have been committed to a variety of murals in the Midland CBD, as functional elements in playspace renewals in various locations and a commemorative statue in Guildford. There are currently no plans to provide artwork in Bellevue however it will be considered in future. The City is now forming a Public Art Strategy to highlight key opportunities throughout the City and can consider requests as part of this process.</p>
<p>Why has a commercial development been approved on residential zoned land? Why was this application not approved by council instead by City of Swan Staff?</p>			<p>107 Clayton St, Bellevue WA 6056, Australia</p>	<p>The lot is zoned ‘Residential Development’ where a structure plan is required. This zoning is predominantly residential development, but including also a range of compatible services, consistent with the needs of an integrated neighbourhood, and planned so as to minimise adverse impacts on amenity.</p> <p>A lunch bar has been approved on this lot.</p>
<p>Do something with this space please. Maintain it or sell it with a condition to develop, it doesn’t matter, just do something with it.</p>			<p>20 Bellevue Rd, Bellevue WA 6056, Australia</p>	<p>This property is not vacant. It is a privately owned house.</p>
<p>Embarrassing entry statement into Midland seeing a row of abandoned or boarded up shopfronts.</p> <p>Why is a large scale meatworks allowed to operate in this location?</p>	<p>2</p>		<p>320A Great Eastern Hwy, Midland WA 6056, Australia</p>	<p>There are currently no vacant shops in this location.</p> <p>This use has been at the premises for over 20 years. Under the currently permitted uses in the Midland Strategic Centre under Local Planning Scheme No. 17, it is unlikely a new meatworks business would be approved in this area. The City cannot force a business to move out of a premises when the zoning changes.</p>

<p>Midland is in danger of being left behind. Midland was comparable to many other suburbs 2 decades ago but is slipping behind in terms of planning, services, street trees and public open space.</p> <p>We need council to start making better decisions to stop the appalling buildings that are going up everywhere. Council has to stop prioritising developers and to start putting the community first. We need liveable spaces. Midland should be a place people want to be, not just somewhere they can afford.</p>	4		<p>2A Dudley St, Midland WA 6056, Australia</p>	<p>Noted. The City is investing in Midland as the Strategic Centre for Midland.</p> <p>New Junction will create a high quality environment where people can work, live and play.</p> <p>The City has also adopted POL-LP-1.12 Design Review where major developments identified in the policy will be reviewed by a panel of design experts to ensure developments.</p>
<p>Definitely need Council to start making better decisions to stop the appalling buildings that are going up everywhere with no mandatory setback for trees/landscaping. Not totally Council's fault, the staff are working with developers long before DA comes to Council, and STAFF have to stop prioritising developers and to start putting the community first. We need liveable spaces. Yes Midland should be a place people want to be, not just somewhere they can afford.</p>			<p>2A Dudley St, Midland WA 6056, Australia</p>	
<p>Again Midland has been let down by planning, so many existing business's moved to Clayton St which is becoming a bottleneck. Now many empty shops in Midland in a very poor economic climate. Benefits to developers again</p>			<p>31 Loton Ave, Midland WA 6056, Australia</p>	
<p>Would be great to breathe some life back into the old buildings near Hungry Jacks.</p>	1		<p>31 Loton Ave, Midland WA 6056, Australia</p>	<p>Noted.</p>
<p>The eaves on this former shop overhang the footpath/road reserve. To pedestrians passing underneath they seem decrepit. Has the CoS had them structurally assessed and/or considered their removal?</p>			<p>60 Sayer St, Midland WA 6056, Australia</p>	<p>Noted. This property has been nominated for a heritage assessment 21 October 2020 Council meeting and a heritage consultant will be undertaking a review. The City will review their assessment and investigate further if required.</p>
<p>Another disgraceful unfinished development that is not only unsightly but a safety issue. Time for action by the council.</p>			<p>62 Sayer St, Midland WA 6056, Australia</p>	<p>Noted. The development was approved in 2007 (DA-796/2006) and assessed against the Residential Design Codes. Since the approval, the State Government have introduced new provisions for multiple dwellings as part of State Planning Policy 7.3 - Volume 2 Apartments which have amended provisions to encourage better design. Furthermore, the City has adopted POL-LPP-1.12 Design Review which requires multiple dwellings to undergo a review by a Design Review Panel which is made up of design professionals.</p>
<p>Gazette First Avenue road extension.</p>			<p>Woodbridge</p>	<p>There is no plans to extend First Avenue.</p>

Retain 'special rural' zoning in the precincts especially in the Helena River flood plain or acquire for public purposes and conservation of the riverine environment.			Woodbridge	There is no 'special rural' zoning in Woodbridge. The land along the river is zoned 'Regional reserve- public purposes, park and recreation. There is 'swan valley rural' cross the river in Caversham. The City does not have any current plans to change the zoning.
Preserve and maintain all residential right-of-ways (back lanes) within the northern Conservation Precinct area.			Woodbridge	Noted. The City has are no current plans to change the back lanes in Woodbridge.

Natural and Cultural Environment				
Industrial Zones				
Comment	Like	Dislike	Location	Action/Response
<p>The Society question the value of maintaining and encouraging further Industrial areas within Bellevue. Bellevue was originally a residential suburb and it has been severely blighted by the encroachment of light industrial. Where there is a surviving element of residential it may be better to encourage restoration of residential pockets, particularly in proximity to the new Bellevue Station.</p> <p>South Bellevue may arguably do better with no Industrial area, as it is cut off from the south by the main freight line, and would benefit from more housing to maintain a community. Bellevue also needs community centres.</p>			Bellevue	<p>Noted.</p> <p>There is the Bellevue Mechanics Institute Hall which is a community facility.</p>
<p>Why were the recommendations of the Bellevue East Land Use Study disregarded. Why is this still zoned industrial and not residual and allowed to be approved industrial conflicting with residential.</p> <p>Not happy having oil warehoused on this contaminated oil site which originally caused a multimillionaire clean up of the site.</p>			109 Clayton St, Bellevue WA 6056, Australia	<p>The City is currently reviewing the recommendations for the Bellevue East Land Use Study. It is expected that relevant scheme amendment will go to Council for initiation in 21/22. The City has reviewed the Bellevue East Land Use Study. An item is scheduled for the April 2021 ordinary council meeting where the Council will review any recommendations made and how to proceed.</p>
<p>Why is this still zoned industrial and not residual and allowed to be approved industrial conflicting with residential. Not happy having oil warehoused on this contaminated oil site which originally caused a multimillionaire clean up of the site.</p>			109 Clayton St, Bellevue WA 6056, Australia	<p>Draft LPS 2020 identifies Bellevue as an industrial area and these areas will be preserved for employment and economic development (Under 3.3 Economy and Employment).</p>

Natural and Cultural Environment

Housing

Comment	Like	Dislike	Location	Action/Response
<p>The Society supports the encouragement of quality growth and infill, preferably not on a plot by plot ad hoc basis, with everyone competing on lowest quality and lowest amenity for the lowest price.</p> <p>The projections of Directions 2031 were written during a boom which has long subsided, but its policy impetus has provided an excuse for more “Affordable Housing” which in reality is code for slums. We had already seen our Mayor Charlie Gregorini gleefully driving a bulldozer through the multi-storey Homewest apartment buildings in Midvale. We do not want to repeat that disaster.</p> <p>The Table 2 Urban Housing Strategy Outcomes appear grimly ‘optimistic’ if one is familiar with the places where it is projected a further 4,362 houses are to be built in the next ten years. It is clear to those of us who live, work and talk to the community in these suburbs, that the large sites where multiple housing can be erected have largely been utilised in the last twenty years. Infill has become epidemic in any areas of Midland and Midvale.</p> <p>We understand that Linc have plans for a large development on the old Midland Brick site, and that Bellevue will have its own miniature Elizabeth Quay very soon, so these may account for 590 new houses, but we would be very surprised to see another 2,292 houses, presumably mostly infill, built in Midland- Midvale.</p>			General comment.	<p>Noted. The City’s Housing Strategy is currently being reviewed to understand the uptake of the upcoding of areas. The City has focused the high density infill in the Midland Town Centre as it is a strategic centre and has access to amenities and services. Some areas surrounding Midland were also up-coded due to the access to these services.</p>

Natural and Cultural Environment				
Natural environment including river and bushland				
Comment	Like	Dislike	Location	Action/Response
Humane, RSPCA approved control of foxes that continue to breed in this area and kill native birds and turtles			145-139 Caversham Ave, Woodbridge	The City does not have a program to cull foxes.
Fence around wetland to stop foxes and dogs killing native birds and turtles.			18 Aquaviva Cir, Viveash WA 6056, Australia	
Walk trail and bird hide with interpretive signage.			Ray Marshall Park 51 Harper St, Woodbridge WA 6056, Australia	The City is currently investigating future plans for Ray Marshall Park. There are no plans to create a walk trail however will take this comment on notice in future planning if feasible.
This natural bush corridor needs to be retained to support the wildlife to access habitat and to provide residents with a treescape and natural environment to enjoy. This will add value to the estate planned for Midland Brick.	2		39 Harford Ave, Viveash WA 6056, Australia	Noted. Part of this land is being developed however the developer has proposed to retain some of the existing trees into the new development.
This beautiful corridor of wonderful trees and a heritage registered Aboriginal site should be identified as public open space in a structure plan for the whole Midland Brick site. It links Eveline Reserve, a Threatened Ecological Community to the Swan River foreshore. Save trees, regardless of their 'significance' Retain and celebrate Aboriginal heritage. Advocate for amenity for the residents, not for the ease of developers.	3		39 Harford Ave, Viveash WA 6056, Australia	
There is a new development planned in Viveash, and in this process some green space, which also houses many different species of native animals, has to go, This is a real loss when this is going to happen and preserving wildlife should be highest priority these days with lots of animals already close to extinction, Furthermore is the green lung which shelters residents in Viveash from pollution as there are some main roads close by	7		38 Cranwood Cres, Viveash WA 6056, Australia	

<p>Figure 9 identifies two Regional Ecological Corridors; the Helena and Swan Rivers. It is significant to note that although these rivers define Midland geographically only the Helena directly borders the defined suburb of Midland. There is a tiny strip of Bushland Forever along the Swan River riverbank however, our members are concerned about the overuse of Glyphosate around the base of E rudis, despite the Phytophthora die-back which is occurring in mature trees along the river from Guildford.</p> <p>It is also significant that the Blackadder Creek that runs through Midland does not have any Bush Forever status sites, as it should, particularly the Blackadder Wetlands which now provide a significant bird sanctuary with over 120 bird species recorded. The Blackadder neither has any Regional nor Local Ecological status or protection, despite being a Registered Indigenous site. This must be rectified.</p> <p>It is essential to respect Bush Forever and Ecological corridors and minimise mowing and herbicide spraying and other adverse impacts. These are not municipal parks, although managed by the City of Swan. These should be treated as Reserves. The only real Municipal Park should be the Midland Oval and its associated 5 hectares of Public Open Green Space.</p>			Midland.	<p>The WAPC is the lead agency for the implementation of bush forever sites. The City is not intended to instigate any further bush forever sites at this time, however the City understands the significance of the sites mentioned and any land managed or held in freehold by the City along these sites are for the purpose of conservation and not intended to be developed.</p> <p>The portion of the Helena River in the Midland Local Area is managed by the Lower Helena Association (formed in 2011) whom undertake on-ground operations including weed control, native planting and water quality improvement planting (Lower Helena Association Inc, 2018). Actions are guided by the Helena River Catchment Group Action Plan 2012 - 2022 (Eastern Hills Catchment Management Program, 2014).</p> <p>The City will consider this comment in future planning.</p>
<p>Blackadder Woodbridge Creek is a single creek with two names. The confluence of the Creek with the Swan River has been almost totally destroyed by the rubbish tip which was in the Blackadder Creek wetland, which are now buried under 5 to 7.5m of unrestricted fill.</p> <p>The recent work at The Westie has seen coffee-rock bundies, alien to the local area, dumped all along the foreshore including in the mouth of the Blackadder Creek, which was the Governors Landing when Stirling resided here. This is also the datum point for chainage up and down the river for Chauncy's original survey map of the Swan. There is little recognition of these European Cultural Heritage values nor of the Indigenous Cultural Heritage values of the place, including that it was a meeting or 'corroboree' place.</p> <p>The work that Blackadder Woodbridge Catchment Group have carried out on the floodplain over the last 20 years is impressive, and the Wetlands Bird Sanctuary should receive Reserve or Bushland Forever status.</p>				Continued.

<p>A number of years ago the City of Swan fenced off sections of the Swan River Foreshore (John George Walk Trail) and implemented measures to minimise erosion and rehabilitate the banks of the river. These look great today. I would love to see rehabilitation efforts continue on both sides of the Swan. I am sure residents on the Caversham side would be thankful for help to prevent the loss of big trees into the river and I know the Viveash locals would love to see a healthier river bank also.</p>			<p>6 Yongara Mews, Viveash WA 6056, Australia</p>	<p>Foreshore condition continues to be monitored along John George Walk Trail, Reg Bond Reserve, Swan Regional River Park, Ray Marshall Park and Woodbridge foreshore, with hotspots identified for on-going monitoring. There are no plans for future works as the City currently has other priorities around Guildford-Midland.</p> <p>Caversham shore along the Swan River is privately owned. The City's Rural Properties Revegetation Program offers native plants free to eligible residents.</p>
<p>This creek line should be cleaned up and revegetated.</p>			<p>Wangalla Place POS 8 Meelah Way, Koongamia WA 6056, Australia</p>	<p>Wangalla Brook is currently part of a five year foreshore restoration and revegetation project, with works having commenced at the western end. Unfortunately a fire last summer has caused a setback but the project is continuing including in upstream areas of the Brook.</p>
<p>Talk of the river and connecting it to Midland....reminds me that down 1st ave where the Woodbridge rec area is and has been overhauled. People are fishing where others are swimming (bottom of 1st ave next to the jetty). The jetty/platform is so hot that no one can sit/fish/ enjoy the amenity. Many people are jumping off and mooring boats despite the sign which is not clearly visible. Cover the platform ? No fishing signs in swim area?</p>	<p>1</p>		<p>Woodbridge Riverside Park and Play First Avenue, Woodbridge</p>	<p>The City does not have any further works planned for jetty upgrades at this location.</p> <p>Current design standards for jetties and overwater platforms do not allow for the incorporation of roof structures for shade provision.</p>
<p>Fix and upgrade river swimming area facilities and restore jetty within the historic theme of Woodbridge.</p>			<p>Woodbridge Riverside Park and Play First Avenue, Woodbridge</p>	<p>City staff consider that the installation of no fishing signage is unlikely to prevent people from fishing in this area.</p> <p>The portion of the Helena River in the Midland Local Area is managed by the Lower Helena Association (formed in 2011) whom undertake on-ground operations including weed control, native planting and water quality improvement planting (Lower Helena Association Inc, 2018). Actions are guided by the Helena River Catchment Group Action Plan 2012 – 2022 (Eastern Hills Catchment Management Program, 2014).</p>
<p>Conserve and retain for passive recreation all undeveloped parklands, public or privately owned (as housing density increases, demand for open space and passive recreation, walking, cycling will increase. The Helena and Swan Rivers are major public assets and river access to the community at large should be retained, even in those areas where flooding is not a risk.</p>			<p>Woodbridge</p>	<p>operations including weed control, native planting and water quality improvement planting (Lower Helena Association Inc, 2018). Actions are guided by the Helena River Catchment Group Action Plan 2012 – 2022 (Eastern Hills Catchment Management Program, 2014).</p>
<p>Seek sufficient funding to enable proper (approved) restoration of the Helena River</p>			<p>Woodbridge</p>	

Health, Wellbeing and Recreation				
Midland Oval - Park requests				
Comment	Like	Dislike	Location	Action/Response
<p>There are very few green spaces in Midland for the community to get together.</p> <p>There needs to be a green centre with maybe a water feature to attract birds and playground where people can enjoy sitting under trees in their lunchbreaks, seniors to meet with each other and for mums and babies to meet and play.</p> <p>There is currently no park in the heart of Midland that meet these needs, which is a real shame in being able to foster social connections, particularly intergenerational connections.</p>	4		Midland Oval, 35 The Crescent, Midland WA 6056, Australia	<p>The City of Swan have finished stage 1 of Weeip Park. The park includes a kick about lawn and terraced seating, play and recreational areas for children and teens and special recognition of Midland's history and heritage through public art and interpretative elements. The youth area will include rock climbing, tennis practice wall and basketball half-court.</p> <p>Stage 2 of Weeip Park is currently under construction with a children's play area and public toilets.</p> <p>In addition to Weeip Park, Residential Park is the second park that will be constructed in 2022/23. A future piazza will be constructed in approximately 10 years.</p>
Need more parks and more playgrounds with slides and flying foxes.				
We should restore the historic velodrome not destroy it for a road to nowhere. This would allow children and adults of any tower blocks around the Midland Oval to ride their bikes in safety.				
We need to increase the size of the park on the Midland Oval, this space is just too small for thousands of new residents expected at this site.				
We need a lovely attractive giant park surrounded by quality housing here - think Russell Square Northbridge. There is adequate space for big events, the parks are well used and development is on the fringe enhancing the quality of life for residents and visitors with easy access to proper green space. Remember - people live in Midland! We want green trees, grass, vegetation and a large space that is beautiful, inviting and a place that people can be happy.				
Midland Oval needs to be retained to the boundary of the Velodrome and made into a Central Park. This will not only increase the value of the apartments that are to surround the Ventral Park it will also give the residents in Midland and surrounds to a wonderful place to congregate and recreate and a place for visitors who are from out of town somewhere of beauty to explore.	2			
There are good examples of recreational spaces in Aveley, Ellenbrook and regional Australia.			82 Morrison Rd, Midland WA 6056, Australia	
Family is very important. There needs to be covered shade at parks for them to gather together to have picnics and fun together with public toilets.			General comment however pin dropped on Midland Oval.	

<p>There is a lack of community facilities in central Midland including a large central green park</p> <p>The City of Swan must retain Midland Oval to the extent of the cycle track as a large central green park so that there is enough pleasant green space in Midland</p> <p>The current Midland Oval Redevelopment Plan has to be ditched as it does not serve community needs for park and green space</p> <p>Midland also has a lack of inexpensive community space such as community meeting rooms and hall</p>	2			Continued.
<p>My family and I have enjoyed the assets of Midland Oval for the 23 years we have lived here, for football training, for cycling for Festivals, Concerts, Carols by Candlelight, Midlandia, and it has been so distressing to see this park, velodrome and oval being wilfully destroyed at the behest of people who live in suburbs which DO have parks and ovals.</p> <p>This site, at the end of Harper St was urged by Ken Wyatt to be gifted as Three Springs Park in recognition of its Natural & Nyungah values.</p>	1			
Leave the oval alone	3			
<p>I agree. We missed the opportunity to have a large green open space like Armadale, Rockingham, Perth, Mandurah, Bunbury etc. have. A place for families and functions. Every time there has been an attempt like this to introduce higher density, it has always failed and created slums. They used the same language for the Bromley towers development that they are using for this development and they are pulling them down. We will end up with a depressed area for rent of last resort and high crime</p>				
<p>The New Junction plan is unwanted, a disgraceful waste of ratepayer money and should be scrapped. The City of Swan has ignored the wishes of locals for years and the current plan is hated by almost everyone. Start again and listen to the people.</p>				
<p>The City states it has created new facilities for cricket, cycling, tennis, bowling etc. Over the past two decades. Great initiative. Unfortunately we are now creating residential infill and there for need to create greater public open space and recreational areas for these residents. It is not too late to rethink Midland Oval.</p>				

<p>Open Space in Midland: Woods bequeathed the Recreation Ground Reserve to the people of Midland in 1891 as part of the first subdivision and it was confirmed by retired Attorney General Septimus Burt KC in 1901 that this status was safe for all time if the Title were to be transferred to the Council. To our knowledge this advice was overruled by the City solicitor, based on no valid argument, other than that the Reserve was never registered.</p> <p>The significant point is that the 5 hectares that currently comprises the Midland Oval precinct, and includes the velodrome, is the only significant Green Public Open Space in Midland other than the Carnegie Gardens which is tiny. The requirement under WAPC's Liveable Neighbourhoods is for 10% Green POS.</p> <p>The current Green POS in Midland counting the Midland Oval area which is being demolished is/was 5.74 hectares or 1.31% assuming only 60% of Midland being residential. Post MORM or 'New Directions' this will halve to 2.67 hectares, or 0.61% of the 60% allowance of Midland's area. This is appalling, and must be addressed.</p> <p>Midland's population is projected to grow according to this document at 5.73% annually, which is very significant and requires adequate provision of Public Open Space. Midland Oval offers the only area where this can happen, and it should be redeveloped with significant planting of trees, indigenous plants and other assets such as water features etc, to provide vital recreation space.</p>				Continued.
---	--	--	--	------------

Health, Wellbeing and Recreation				
General park upgrades and requests				
Comment	Like	Dislike	Location	Action/Response
The pleasant ambience of a garden amidst the concrete will provide a welcome corridor for the person on foot, and encourage others to slow down.	1		Great Eastern Hwy Before Tuohy L, Midland WA 6056, Australia	Noted. The previous Tuohy Gardens has been closed off to the public and is under the jurisdiction of Development WA (previously Metropolitan Redevelopment Authority). The City will pass these comments onto Development WA.
Children's' sports are getting bigger; we don't want to lose any more ovals, as they cannot be replaced. Re-activate them so they are useable.			Jack Williamson Park 41 Eveline Rd, Middle Swan WA 6056, Australia	Jack Williamson is being considered for revitalisation as part of the Midland Brick development. The City is currently working with developers to determine the feasibility of reactivation as part of their development.
Maybe this oval could be revitalised/ repurposed (skate park, playground, community garden) if the Midland Brick redevelopment Eveline Rd extension goes ahead.				The City is already planning a skate park at Lot 300 Grey Street in front of Midland Active.

<p>water park</p> <p>with slides that vary in height</p> <p>with small pools</p> <p>with built in sprinklers</p> <p>with grass so no one slips and grazes there knee</p> <p>and mabie inflatable boats</p>			<p>18 Railway Parade, Midland WA 6056, Australia</p>	<p>The City does not generally install water playgrounds due to high maintenance requirements and health risks. Swan Active Midland provides aquatic facilities for the local area. Swan Active Midland is undergoing an extensive refurbishment which will be completed in 2023 and will include new water play features.</p>
<p>More fun activities such as - Water parks, skate parks, bmx pump tracks, mountain bike tracks.</p>	2		<p>Midland Youth Hub 13 Victoria St, Midland WA 6056, Australia</p>	<p>The closest BMX track is in Viveash.</p> <p>The City of Swan is planning a new outdoor recreation space at Lot 300, Gray Drive, Midvale. Stage 1 of the project will focus on the delivery of a skate park and pump track.</p> <p>The City's Stage 1 of Weeip Park also includes a teenage hangout space with a rock climbing wall and half basketball court.</p>
<p>Skate park and infrastructure for young people.</p>	2			
<p>A skate park near the Midland Youth Hub. So more young people come to Swan City Youth Service based in the youth hub. This would allow more young people to access additional service offered by SCYS and keep them away from risk and solve boredom.</p>	2			
<p>Want a skate park</p>			<p>170 Morrison Rd, Midvale WA 6056, Australia</p>	
<p>Want to see the same infrastructure as the new skate park in Viveash. Logs for kids to sit on, drink fountains and a service provided where adults teach kids how to use the skate facilities. Not sure of whom provides the service there but it has been successful and nice to see.</p>			<p>Morrison Rd After Beaconsfield Av, Midvale WA 6056, Australia</p>	
<p>A skate park or BMX track on the former site of the Koongamia Hall would be great. The property is still an asset of the council and sitting unloved.</p>			<p>7 Banjine Rd, Koongamia WA 6056, Australia</p>	
<p>This park is always busy with sporting events. The playground is very out dated and minimal. Please upgrade this area.</p> <p>The oval needs a bigger basketball court. We are constantly sharing the single hoop with others.</p>	2		<p>North Swan Oval 40 Patterson Dr, Middle Swan WA 6056, Australia</p>	<p>North Swan Park is going to be substantially impacted by the Orange Route and so there are no plans to upgrade the site at this time.</p>
<p>I'd like to see more dedicated areas for walking and recreation. Landscaping, making Woodbridge and Midland a destination place with things to do. Loving the idea of the mini golf, some more things like that.</p>	1		<p>Harper Park, Great Eastern Hwy, Woodbridge WA 6056, Australia</p>	<p>There is a pop up mini gold on Cale Street.</p> <p>The City is working on improving the heart of Midland through the New Junction Development, Midvale Skate Park and other projects.</p>

A park and playground here would be so well utilized. There is nowhere in Midland to take kids to play. Woodbridge riverside park is huge and doesn't have much shade. For smaller kids a local park would be hugely beneficial.	2		60 Yelverton Dr, Midland WA 6056, Australia	<p>This area is owned by the DevelopmentWA. The City will review the area once the DevelopmentWA has handed the land back.</p> <p>In regards to places for kids to play in Midland, the Midvale Skate Park will be completed in 2020/21, and Stage 2 Weeip Park includes a multi-million dollar children's playground and youth zone.</p> <p>It is intended that a playspace will be developed at Water Tank Park (at the end of Main Gate adjacent to the location they have selected). The City is likely to construct this on behalf of Development WA within the next few years, subject to Council approval.</p>
Shade sails would be nice and replacing the sand as it just covers /hides the broken beer bottles that get smashed there.	1		Viveash Park 1 Toodyay Rd, Middle Swan WA 6056, Australia	Playspace renewal is planned for 2025/26 however timing is subject to funding and the condition of the play equipment as it deteriorates over time. Shade sails are generally not installed unless there is a lack of natural shade.
I use Whiteman Park no parks in Midland			7 Templeman Pl, Midland WA 6056, Australia	<p>There are several parks in Midland including Weeip Park, Warnock Park, Corti Park and Koolbardie Park.</p> <p>The City has planned the development of Weeip Park, other future parks in the New Junction precinct, and Midvale Skate Park. Woodbridge Riverside Park is also a destination park in close proximity to Midland.</p>
It would be nice if there was a park in midland instead of travelling to Woodbridge. Not enough public toilets close to the park.	1		86 Morrison Rd, Midland WA 6056, Australia	
An RC buggy track, doesn't have to be big, just a good practice track	2		Swan Active Midland 27 Gray Dr, Midvale WA 6056, Australia	There are no suitable locations in Midland local area for off-road vehicle use, however there is an informal facility in Gnangara and facility in Gidgegannup. The closest BMX track is in Viveash.
Create Perth's only Chess park with half a dozen or more shaded tables with permanent chessboards installed in the table tops. Also a paved giant chessboard. You could liaise with local chess clubs, retirement villages and schools to hold tournaments or even a chess festival. It would bring people of all ages and backgrounds together and be a unique opportunity. You'd be surprised how many people play chess regularly. There are many beautiful locations and may not be limited to one.	1		Harper Park, Great Eastern Hwy, Woodbridge WA 6056, Australia	The City has not received requests for chess infrastructure in the past and this is not a high priority. We may be able to consider a chess piece as part of a playspace renewal in future.

A coin BBQ here would be great.			Park on Stewartby St and Harford Ave, Viveash WA 6056, Australia	A BBQ is not warranted under the City's Standards of Provision as it is a neighbourhood/short stay park.
Todd Park to be suitably landscaped and a public Artwork be placed in the Park in acknowledgment of the role, contribution and service of Colonel Thomas Todd. This landmark requires an immediate upgrade!	1		Todd Park 24 Helen St, Bellevue WA 6056, Australia	Todd Park is a small park under the City's Standards of Provision therefore a high level of embellishment is not warranted. There are currently no plans to install a public art piece at this location. The City has drafted some proposals in consultation with the Residents and Ratepayers Association in the area however funding has yet to be identified due to low priority.
Investigate whether the State Government would allow a slice of the former Midland Primary School Oval to become a pocket public open space for the community.	1		20 William St, Midland WA 6056, Australia	The City's focus is on developing existing Public Open Space, at present we are investing into multimillion dollar facilities at New Junction and Midvale Skate Park.
The proposed Watertank Park was talked about by the MRA and has never happened. City of Swan should investigate creating this public open space now and moving the 3 London Plane trees from Railway Parade to the site.	1		Turntable Walk, Midland WA 6056, Australia	This area is owned by the DevelopmentWA. The City is negotiating with Development WA regarding taking over construction of the site in the next few years. This is subject to Council consideration and approval.
Like the forgotten park of Middle Swan, Vellgrove Reserve is tired and needs a makeover. New play equipment and other recreation activities would be great.	2		Vellgrove Reserve 15 Dance Dr, Middle Swan WA 6056, Australia	This playground was upgraded in 2019/2020. Works included a public art component to add a unique style to the Park.
This land is Public Open Space, and either develop it as such or sell and make another POS in close proximity larger, as what we are tiny and dry. Do NOT sell and put money in Cos coffers. Too much open space has been taken from Bellevue already.			Robert Street Reserve 8 Bellevue Rd, Bellevue WA 6056, Australia	There are no current plans to improve this reserve. The City will consider this under the implementation of the Open Space Strategy subject to funding.
This would be a great place for a community garden!			8 Bellevue Rd, Bellevue WA 6056, Australia	
Woodbridge riverside park flying fox needs rope tightening and lifting (sand was just dumped underneath since it drooped). No safe way to get the flying fox to the next person - needs stairs in the middle of that slippery excuse of a ramp to bring it up. Exercise equipment along the river path or near the oval in the park would be great. A water feature playground would be fabulous. Current version is a joke on hot days.	2		26A Third Ave, Woodbridge WA	This was raised as a work request and an investigation was undertaken. A rope can not be attached to the flying fox due to safety issues. The rope could cause injury to others during use.

Area needs improvement. Many more people using this area now as Viveash continues to grow.	1		Reg Bond Reserve, Bernley Dr, Viveash WA 6056, Australia	Reg Bond Reserve does not have any improvements planned at present. The activation of the site will improve with the Midland Brick development. There is an active Friends Of group that has recently undertaken planting and other works at the reserve, however no infrastructure is planned.
Would be good to have public toilet here please	1	1		Toilets are not required as per the Standards of Provision as this is a local park. The City does not install toilets at the majority of parks due to the maintenance.
Mini basketball court, footy posts, exercise equipment and playground would great.				There is not a rope swing at Reg Bond Park.
Rope swing needs replacing, this provides so much enjoyment for the youth.				
This park need to be irrigated as it is the only safe playground in this area and would improve amenity			Whybourne Park 1 Harold St, Bellevue WA 6056, Australia	The City currently has constraints in its water licences City wide. The City will be facing a significant shortage of water into the future with continued growth and restrictions placed upon licencing. The City is undertaking an audit of all irrigated sites to determine if there is any capacity within existing licences to irrigate priority sites.
Great park and facilities but needs more shade cover please			Lloyd Penn Park Banjine Rd After Coolga Rd, Koongamia WA 6056, Australia	Lloyd Penn Park is proposed to be upgraded in 21/22 subject to funding. The City will be planting additional trees as part of the upgrade, as the City's preference is to naturally shade playspaces.
This sad park is an example of the public open space available in Midland. This is not good enough and more attention needs to be given to it. A gazebo, some shaded seating, somewhere for neighbours to sit and connect is what is needed here			Koolbardie Park 14 Margaret St, Midland WA 6056, Australia	Koolbardie Park is scheduled for a playground replacement in 24/25 subject to funding and condition.
Harper park in Woodbridge I would like to see this park updated its way behind the times and seriously needs to be brought up to date			Harper park Midland Stn Stand 9, Midland WA 6056, Australia	There are no current plans to upgrade Harper Park. This park is in close proximity to Swan Regional Recreation Park in Midvale which is a destination park.

Thank you to the City of Swan for helping secure the Stewartby Park Jumps. The free workshops are great, they are well used, by many outside the suburb also. The community rehab efforts are going well and last year's seedlings look a treat. May there be more collaboration between City of Swan and local residents to secure great spaces for enjoyment.			11 Sefton Ave, Viveash WA 6056, Australia	Noted.
I grew up playing here at Ashby Gardens. My kids played here too, until the COS, without consultation, chopped down 3 massive big Mortan Bay Fig Trees and the equipment was too hot to use by mid-morning. Whilst equipment has been upgraded, though nothing beats those massive swings of old, there has never been any shade added. We are a growing area and it would be awesome to have adequate sun protection for parents and kids who utilise the park.			Ashby Gardens 17 Bernley Dr, Viveash WA 6056, Australia	There are currently no plans to upgrade the park, however it will be considered as part of the implementation of the Open Space Strategy subject to funding.
Basic facilities generally provided by Local Authorities should include public toilets and parks. Midland suffers from a paucity of both. It seems a campaign in the local press was directed against parks, which were presented as places where people lolled about drinking and socialising. This campaign was directed against both Tuohy Gardens and Midland Oval, and has been recently directed against Carnegie Gardens.			General	The City only installs toilets in large parks in accordance with the Standards of Provision because they require a lot of maintenance and can attract antisocial behaviour.
Tuohy Garden needs to be returned to the City of Swan and ultimately to the people of Midland. It should be returned to a lovely rose garden	1		Great Eastern Hwy Before Tuohy L, Midland WA 6056, Australia	Tuohy Gardens is not a public open space and zoned mixed use residential and commercial and under the control of Development WA.
Install new sign with new name of Woodbridge Riverside Park at the entrance of the park at the end of First Avenue and at the entrance to the park at the northern edge the park.			Woodbridge Riverside Park First Ave, Woodbridge WA 6056	A work request was raised to install the new sign. This was completed in February 2021.
Looking sad and sorry, Ray Marshall Park. Needs some loving and encouragement for more people to use the space.	3		Ray Marshall Park	The space is historically an old landfill site which makes development of the area very costly. The City is currently investigating potential works at this site.
Install a proper gate of an aesthetically pleasing style within the conservation character to the entrance of Ray Marshall Park on the un-gazetted road at the Northern end of First Avenue.				
Replace boulders around a portion of Ray Marshall Park with pine logs.				
Rename a portion of Ray Marshall Park as Woodbridge Riverside Park.				
Level and clear northern end perimeters of Ray Marshall Park. Carry out grassing and tree planting to improve the appearance of the playing field.				
Implement a policy and mechanism for replacement of asbestos boundary fencing between residential lots and Ray Marshall Park. Replace or disguise wire security fencing around boat-shed to within historical character.				
Level off and fill the area of the park area behind the rear of the properties of the Eastern end of Bayley St.				

Health, Wellbeing and Recreation				
Air quality and Noise				
Comment	Like	Dislike	Location	Action/Response
<p>Air Quality</p> <p>City of Swan needs to acknowledge the ongoing issue of periodic poor air quality in and around Midland caused by the various brickworks and waste facilities. The City should be taking a critical view of current monitoring approaches and engaging regularly with the regulation agencies and the polluters to protect the interests of residents and ratepayers.</p>				<p>The Department of Water and Environmental Regulation (DWER) is the state agency managing environmental pollution in Western Australia. The City provides advice and assistance on pollution issues to the DWER. The State Government is currently proposing zoning changes to the Metropolitan Region Scheme to allow for the existing freight rail to be realigned out of the Midland strategic metropolitan centre. The City supports the long-term relocation of the freight rail line away from Midland centre and this is included as a key priority in the City's 20/21 Corporate Business Plan.</p>
<p>Public safety Freight Line:</p> <ul style="list-style-type: none"> • Exceptionally dangerous goods pass within 20 to 40 m of residences in Woodbridge and Hazelmere. These goods include Hydrogen Cyanide, which is a Category 1 dangerous chemical⁵, contained under pressure and which even brief exposure can be lethal to all forms of life. Others toxic industrial chemicals include caustic soda, hydrochloric acid and sulphuric acid. Fuel oil adds to the problem in that containment of is impaired by heat. • While we are confident steps are taken to minimise risk, risk remains nonetheless. <p>Drivers on occasion exceed the speed limit risking derailment on a bend on a narrow gauge line, and no human controlled system is free of risk. The intra-state trains have a single driver and thus no backup in the event of a problem. Accidents do occur as recently shown by the rail freight accident in the Perth Hills⁶. The risks are small but measurable and the consequences extremely severe. A formal risk management exercise would identify this circumstance as unacceptable.</p> <p>Figure. Approximate 200m residence exclusion zone south of the freight line according to SPP 5.4 (2019). This includes the primary school, all residences on Amherst, Devon (not shown) and Holmesdale Rds. All are adversely affected by freight rail noise pollution. Note a similar zone exists to the north and east.</p> <p>Proposed remedies:</p> <p>That City of Swan Council:</p> <ul style="list-style-type: none"> • Make a strong representation to the State Government Planning and Environment Ministers to support land purchase to enable the realignment proposed in MRS Major Amendment 1313/41 to occur⁷ • Urge the State Government to construct the diversion as an urgent matter noting supporting economic benefits that will arise as a consequence • Make strong representation to State Government for the immediate construction of an acoustic barrier to protect residents and children as an interim measure. 				

<p>Noise: City of Swan needs to address airport flight paths as a problem, including a potential health issue for residents in Midland due to increasing unregulated flight times and advocate a curfew for the airport or a second airport to allow a curfew. Engagement with Perth Airports, State and Federal parliamentary members is needed on this. Pearce Airbase is the logical convenient location for Perth's second airport with a railway already adjacent. The City should actively promote both the reopening of passenger rail services on the Midlands line and the Second Perth Airport at Pearce, particularly for early FIFO worker flights.</p> <p>The standard gauge freight line bend at Woodbridge remains an impediment to efficient East-west rail services. The City supports the relocation of the freight rail line away from Midland centre, and will continue to advocate the State Government in finalising the long-term realignment of the railway line.</p> <p>This is totally supported but all we have to date are worthy words and successive piles of reports. The Planning fiasco in rail planning is most pronounced when we consider that in 2020 we still have not engineered proper freight rail link with the Container wharves which they serve.</p> <p>Meanwhile the noise that freight trains make on the Woodbridge bend is the sound of steel grinding against steel because the radius was designed for the Narrow Gauge rolling stock, while Standard Gauge cannot cope without differentials, or independent axles neither of which are practicable.</p>				<p>The Midland Local Area is subject to a number of sources of noise, in particular primary freight roads and the Midland freight line and the Perth Airport aircraft noise (Australian Noise Exposure Forecast (ANEF) contours). Development of noise-sensitive land uses within trigger distances of major transport corridors is required to be designed in accordance with State Planning Policy 5.4 Road and Rail Noise (SPP5.4). A key objective of SPP 5.4 is to minimise the impact of road and rail noise on noise-sensitive land uses; and protect the State's key transport corridors.</p> <p>The proposed new alignment of the Midland freight line to bypass the centre of the Midland SMC is currently being planned which will reduce rail noise impacts in the long-term.</p> <p>The ANEF contours affects a large portion of the Midland Local Area. Where development is proposed (in particular for a sensitive land use such as residential development) within the 20 ANEF contours or above, planning approval may be required. Through the approval process, appropriate siting and design is required to ensure the development provides for acceptable noise standards in accordance with State Planning Policy 5.1 Land Use Planning in the Vicinity of Perth Airport, relevant building codes and Australian Standards. A notification is then generally placed on the land's Certificate of Title advising subsequent landowner(s) that the property is affected by aircraft noise. Perth Airport has advertised their draft Master Plan 2020 and is progressing with the planning and approvals for a new runway to support the growth of Western Australia. At this stage of the planning process the exact flight paths are not known. The flight paths will be completed as part of the final flight path design in the three years leading up to the opening of the runway (Perth Airport, 2018). For some people, when the new runway opens, their exposure to aircraft noise will reduce.</p>
<p>Noise pollution in the Woodbridge community arises as a consequence principally of the presence of a rail freight line. The Woodbridge community opposed construction of the freight line in its present alignment in the 1950's and we continue to oppose its presence. As well as many other submissions and actions since 2002, the Woodbridge Ratepayers Association Inc. (the WRA) made a submission to and appeared at the Planning Commission Tribunal in 2018; for the Government to purchase a certain portion of land necessary for future freight rail line realignment but the matter is still with Government and unresolved.</p> <p>Noise pollution:</p> <ul style="list-style-type: none"> • Noise levels at times far exceed safe levels registering as high as 110 Db adjacent to residences. Forty-five decibels is regarded as acceptable in an open environment, 55 dB outside a residence over a 24 hr period. Levels higher than 80 cause tinnitus, hearing loss and contribute to heart disease. • Current environmental regulations require a gap of 200 m between a residence or noise sensitive activity such as a school or childcare centre and the centre of a rail line. Residences along Amherst Road lie within 20 to 50 of the centre of the nearest rail line. 				

				<p>...continued</p> <p>Others will experience little or no change, while some people will experience increased aircraft noise or be exposed to aircraft noise for the first time (Perth Airport, 2018). Development will also need to consider the potential for increased noise related issues as housing densities increase over time with more people are living in closer proximity to their neighbours or within mixed use developments.</p>
--	--	--	--	---

Health, Wellbeing and Recreation

Waste and Illegal Dumping

Comment	Like	Dislike	Location	Action/Response
Dumping has become a problem at this site			2B Eveline Rd, Middle Swan WA 6056, Australia	<p>The City offers a number waste minimisation, litter reduction and recycling options for residents including:</p> <ul style="list-style-type: none"> • The Bullsbrook Recycling Centre (BRC) was officially opened in August 2017. This facility is free for use by the City’s residents for recyclable material like green waste, mattresses, metals, cardboard, E-waste , white goods and untreated timber. As well as a tip shop for pre loved items to get a new life. • Nine Recyclable Goods Drop-Off Days held annually in the Midland Local Area at the Jack Williamson Oval; • The Reduce Illegal Dumping (RID) campaign launched in 2016 which encourages residents to dispose of waste responsibly or report incidents of illegal dumping; Midland Local Area Plan Background Report 2020 City of Swan • From July 1, 2017 year round collection of mattresses are available through the pre booked verge collections. • From July 1, 2018 verge collections transitioned to an on-call service providing year-round access to collections; • Adopt-A-Spot, a Keep Australia Beautiful (KAB) partnership program encourages residents to adopt a site in their local area to look after and keep litter-free; <p>Shopping Trolley collections process introduced in 2020. Where trolleys are collected off verges and delivered to the Middle Swan Depot by City of Swan Operations personnel.</p> <ul style="list-style-type: none"> • FOGO Waste System implementation by 2022/23. Since the opening of the BRC the City has seen a 9% reduction in illegal dumping, a projected saving of 2,281 tonnes of carbon dioxide annually and overall a reduced amount of waste that would normally end up in landfill.
Litter control should be regularly visiting this location - walkway between Lloyd Street and Loton Avenue.	2		Midland	
Clean up litter all around midland	1		Midland	

				Continued On 1 Oct 2020 the City commenced collection of containers as part of the Container Deposit Scheme which may encourage people to collect/recycle containers
<p>Waste minimization: The Society supports the work of ACE in advocating for waste minimization strategies to be adopted in the City of Swan. The base principle required globally is that manufacturers adopt Cradle to Cradle design strategies, and not leave the cost of the end life of their products to the consumer or public purse.</p> <p>The Society strongly opposes incineration and Waste to Energy for dealing with municipal or other waste because of the contamination of toxic gases into the atmosphere See also 3.2. above</p> <p>Energy Efficiency and Carbon Reduction</p> <p>The City of Swan's Sustainable Environment Strategy (2012) states that the City will work internally and with partners to monitor and improve efficiency in the use of natural resources and to support and implement the development of sustainable alternatives.</p> <p>The Society supports these sentiments and suggests reducing inefficiencies. For instance, Less mowing less spraying of herbicides etc will work together. Eg; Herbicides defoliate the ground which encourages weeds to grow which encourages the use of more herbicides. Wasteful and illogical behaviour, creating a vicious cycle.</p>			Midland	<p>The City will be implementing the 'Food Organics Waste Organics' Waste System in 2022/2023.</p> <p>Only Materials /items that cannot be reused/recycled or processed through the FOGO process will go to the Waste to Energy process.</p> <p>The Waste to Energy process which turns waste to valuable energy is a far better option than land fill and Co2 emissions</p>

Social Services				
Community Facilities				
Comment	Like	Dislike	Location	Action/Response
MJAC is fantastic, well done the new administrators. Please CoS let's invest in improving the infrastructure (air-conditioning please!), equipment and continue with the great courses and artsy scene.			Corridors College, 276 Great Eastern Hwy, Midland WA 6056, Australia	The City is planning to undertake conservation works to the Midland Junction Art Centre building in 2021/22 subject to budget. The City continues to support Mundaring Arts Centre through a funding agreement to deliver arts services within the City of Swan.

Social Services

Antisocial behaviour and Safety

Comment	Like	Dislike	Location	Action/Response
Anti-social behaviour and street drinking needs to be stamped out along Helena Street. Investigating the surrounding liquor outlets for selling alcohol to intoxicated individuals would be start.	1		24 Helena St, Midland WA 6056, Australia	Historically there has been concern regarding the perceived level of crime and anti-social behaviour by businesses and residents in the Local Area. The creation of safe public spaces such as streets, car-parks and parks is a priority for the City and the community. 'Closed Circuit Television' (CCTV) cameras have been installed around Midland and a direct feed is provided to WA Police to assist with crime prevention.
Since moving from opposite the library, this space has introduced vagrancy and anti-social behaviour such as loitering once the volunteers close up shop of an evening and head home to the cosy suburbs. It's a good initiative but in the wrong location - residential neighbours on streets behind and nearby are getting tired of calling the police at 3am to manage disturbances that have risen since it has been here.			336 State Route 51, Woodbridge WA 6056, Australia	City officers meet regularly with the Midland Police Office in Charge to address current community safety concerns.
Install cameras to deter car break ins and drug dealing.	2		Reg Bond Reserve, Bernley Dr, Viveash WA 6056, Australia	The City has unfortunately had a delay in the expansion and reinstatement of its mobile CCTV program however when this is implemented locations such as Midland Sports Complex will be prioritised.
Would like to feel safe. Some streets are not good for gophers to travel on the elderly. Plant more trees.	4		31 Loton Ave, Midland WA 6056, Australia	
Camera needed to stop hooning in carpark.			Midland Sports Complex, Patterson Road, Middle Swan WA 6056, Australia	

<p>Drug dealing and graffiti - no one seems to be able to fund a cctv. Children's and adults safety is at risk and the City of Swan doesn't act. Does someone need to be assaulted or attacked for something to be done?</p> <p>My role isn't to continuously be a watch dog for the police to report crimes as I have things to do. Why should our properties regularly be tagged? This is simple to me but let's make the forgotten suburb, Woodbridge safe!</p>			<p>43A Amherst Rd, Woodbridge WA 6056, Australia</p>	<p>The City has implemented a range of measures to reduce the impacts of graffiti, including rapid removal and often works to modify public areas to design out crime opportunities. The City has unfortunately had a delay in the expansion and reinstatement of its mobile CCTV program however when this is implemented locations such as Woodbridge will be prioritised.</p>
<p>There are constantly inebriated people in the park. Additional support is needed to make this a community-friendly space.</p>	1		<p>49 Helena St, Midland WA 6056, Australia</p>	
<p>There has been a lot of antisocial behaviour close to the library lately (behind the library in the grasses area) This has meant avoiding the library for visits with my small kids.</p>	1		<p>45 Helena St, Midland WA 6056, Australia</p>	
<p>Do something with this awful space! Broken glass, rubbish, old clothing etc. always dumped here.</p>	2		<p>45 Byers Rd, Midland WA 6056, Australia</p>	

Social Services

Services for Seniors

Comment	Like	Dislike	Location	Action/Response
The former Swan District Hospital site should be redeveloped for aged care and or retirement facilities.	1		Swan District Hospital, 1 Eveline Rd, Middle Swan WA 6056, Australia	<p>Council adopted scheme amendment LPS17-179 which reclassified and rezoned the former Swan Districts Hospital site. Permitted uses in the scheme amendment</p> <p>The uses permitted include aged or dependent persons dwelling, residential aged care facility and retirement village.</p> <p>A number of aged care facilities exist in the Local Area including Swan Nursing Home and Touhy Nursing Home. Attracting private sector provision of aged accommodation is an advocacy priority for the City of Swan, and development sites for further aged care provision are being investigated in Midland.</p>
<ul style="list-style-type: none"> - 'Grey power' is a valuable resource - Aged care can be linked with childcare centres, primary schools or libraries - Encourage people to build houses with one room annexes so that grand parents can live with their grand children 			2 Templeman Pl, Midland WA 6056, Australia	Noted. The City is not in the position to facilitate these however under State Planning Policy 7.3 Residential Design Codes, ancillary dwellings are permitted on freehold lots where some can living in addition to the main house.
It would be great to have some additional services for seniors during the week. For example, an open day where people could come anytime during the day to access information about services (no advertising) and activities such as Congo and trying different foods.			31 The Crescent, Midland WA 6056, Australia	Community Care Services offers a variety of support services designed to assist eligible clients who are frail aged or living with dementia and their carers. The Active Seniors Program at Swan Active in Midland and activities at Midland Library that are inclusive and welcoming across all cohorts. The Midland Seniors Network was recently started by the City and includes representation by the Swan District Senior Citizens; Seniors of Swan; Midland Probus Club; The Rotary Club of Midland; Swan Districts Lions Club; and Country Women's Association (CWA) – Midland Branch. This network is aimed at identifying critical concerns relating to seniors in the area
People over 65 should get free solar power			30 George St, Midland WA 6056, Australia	The City is part of the Switch Your Thinking program which negotiates discounts for residents on sustainable products including solar energy.
Shopping Centre is senior friendly, that's good. Free transport to and from the Hospital would be good because \$20 per trip is expensive when on tight budget.	1		The Crescent Before Templeman Pl, Midland WA 6056, Australia	Swan Community Care offers subsidised transport options for seniors in the Swan area.

Can we please do more lunch visits with swan community cares.			2 Templeman Pl, Midland WA 6056, Australia	Noted.
Community care service is excellent				
We use swan caring club and sometimes have outings in the midland area				
The Club @ Community Care is useful albeit expensive for those on a lower package.				
I love the services the club provides. I would like more opportunities for people with disabilities to get jobs; I would like to work in a hospital or day care.				
I really like the club and the services they provide such a Funky Club.				
The services a relatively good. Need to focus on integration of various and diverse client groups. Disabled, elderly etc. Offer more services of physical and mental exercises for a wider group and include them in aged care services.				

Social Services				
Community Services - Young people				
Comment	Like	Dislike	Location	Action/Response
I love the pool table at SCYS. I would like to see more activities and excursions to Bounce, laser tag.	2		10 Padbury Terrace, Midland WA 6056, Australia	SCYS School holiday programs are delivered which include excursions to Laser Tag, Bounce, Beach, Bowling etc
I'm not aware of any FREE programs in the middle swan area for teens, drug and dirtbag free so that they can enjoy mateship, keep out of trouble, and be educated and guided.	1		83 Eddie Barron Dr, Middle Swan WA 6056, Australia	The Swan City Youth Service (SCYS) in Midland is a Not-for-Profit (NFP) organisation supported by the City and other tiers of government that operates as a one-stop-shop for young people aged 12 to 25 years. The SCYS offers a range of educational, recreational, life skills, and art and music programs. A variety of services offered include drug and alcohol counselling, mental health support, weekly medical clinics, assistance with finding accommodation and accessing Centrelink or any other services required. As well as Swan Active, Midland Library running programs and initiatives for young people throughout the year and particularly during school holidays. SCYS , RISE youth, PCYC, Our Place LGBTIQA+ Drop-in are available within a 2km radius of Middle Swan.
Youth centre, a sort of big one where there is room to chill by yourself but also be able to hang out with your friends	1		11 Ryan Ct, Midland WA 6056, Australia	SCYS has plenty space where young people can find quiet areas to relax.

Social Services

Midland Active

Comment	Like	Dislike	Location	Action/Response
I like using swan recreation centre spa and swim (I will do water aerobics eventually)			Swan Active Midland 16 Gray Dr, Midvale WA 6056, Australia	Noted.
/ go to Wanneroo pool for swimming lessons because it's closer to my Grandma who takes me. I wish I could come to Midland but can't get there by myself.		1	Swan Active Midland 16 Gray Dr, Midvale WA 6056, Australia	Ellenbrook Leisure Centre may be an option, proposed completion is set for 2023.
Need a new swimming pool. The existing one is old and needs an update. Need an outdoor cinema like Basso.			Swan Active Midland 27 Gray Dr, Midvale WA 6056, Australia	Swan Active Midland proposed upgrades scheduled for August 2021 (completion estimated for April 2023).
skate park with bowl and ramps drinking fountain			Swan Active Midland 16 Gray Dr, Midvale WA 6056, Australia	The proposed skate park development will be located at Grey Drive. Works are expected to commence in 20/21. The site with the tennis courts is a privately owned land.
This would be better located on the opposite side of the road next to the tennis courts. Future possible development would be limited in the current planned location. What is planned to be built in the adjoining area in the future? Houses? Apartments? Seniors housing?			Proposed Skate Park Morrison Rd After Gray Dr, Midvale WA 6056, Australia	Skate park, works commence 20/21. Woodbridge Riverside park is also located in Woodbridge.
Could we get a kids play centre/gym or something like that, maybe near Swan aquatic Midland. Nothing but swimming lessons around for little ones under 6. The local playgrounds are unsafe.	2		170 Morrison Rd, Midvale WA 6056, Australia	

Social Services				
Community Services - General				
Comment	Like	Dislike	Location	Action/Response
Loneliness is a big problem. Many people are isolated and need visits from someone.			64 Morrison Rd, Midland WA 6056, Australia	The City will undertake further research in relation to reasons people feel isolated, i.e. perceived lack of activities, groups, transport or missing sense of community.
Library holds rhyme/story time sessions, Middle Swan Primary School at the hub hold play group for toddler's pre-schoolers -both free. Dance studios and a gymnastic centre in the area hold lessons for toddlers.			170 Morrison Rd, Midvale WA 6056, Australia	Noted.
Being able to volunteer despite physical and mental disabilities would fulfil the need to help others despite the "Duty of Care" red tape that stops so many people from participating.			The Crescent After Templeman Pl, Midland WA 6056, Australia	Noted. The City adopted the amended City of Swan Volunteer Plan 2020-2025 at the September 2020 Council meeting. The City has resources for volunteers which can be found on the City's website. https://www.swan.wa.gov.au/Your-Community/Get-involved/Volunteering/Where-can-I-volunteer-in-my-community/Swan-Volunteer-Resource-Centre

Have seen large numbers of homeless young people in the area. More services and funds are needed to help centres help young people			7 Brockman Rd, Midland WA 6056, Australia	Indigo Junction Youth Service offers housing, tenancy support and education Kira House provides short term crisis accommodation for women aged 14 to 18 years with or without children experiencing or at risk of homelessness due to family or domestic violence or other forms of crisis.
Needs to be a stronger focus upon homelessness services. And also an increase in emergency response services/patrols. People get pushed out to the end of the train line and then have nowhere to go.	2		Midland Stn Midland, WA 6056, Australia	COS is advocating for the Indigo Junction redevelopment to be funded which will provide 12 crisis youth beds and 22 individual units upon the existing Indigo Junction site. SCYC offers a variety of services including drug and alcohol counselling, mental health support, weekly medical clinics, assistance with finding accommodation and accessing Centrelink or any other services required. Inclusive of Emergency Food Relief
Lack of Sleeping arrangements and opportunities. Lack of sleep leads to bad mental health which affects ability to perform at work. Great services for food behind the midland police station. Reduce red tape on Planning approval/ increase council support for charities who provide services for homeless people. Important that these charities still have minimum requirements for working with children's check. Lots of drug problems in midland and there is access to worse drugs than the city.	1		274 Great Eastern Hwy, Midland WA 6056, Australia	
A proper approach to homelessness needs to be adopted by the City - Midland is not a 'dumping ground' for unfortunate people who have nowhere else to go - a Regional approach needs to be taken up by the City of Swan to ensure that the city is not trying, and failing in isolation, to manage a metropolitan-wide issue .				In May 2019, prior to COVID pandemic, City of Swan partnered with Indigo Junction and RUAH for Connections Week to survey people who are experiencing homelessness in Midland. This survey identified that 149 people are experiencing homelessness in Midland including 52 children. It was identified that families make up 27% of Midland's homeless compared to just 2% in Perth and 7% in Fremantle, and of the families identified in Midland 92% are Aboriginal and/or Torres Strait Islander. COVID -19 has seen a marked increase in support provision of emergency relief services. Sustainability of this support will be vital throughout COVID-19 recovery when benefit payments return to basic levels. In the November 2020 Council meeting the Council resolved to approved the CEO to draft a joint funding submission with Indigo Junction to the State Government for outreach program. Council also resolved to approve the CEO to provide \$20,000.00 a year for a three year trial towards a funding proposal.

<p>The Swan Group Woodturners require a facility in which 5 – 6 lathes could be permanently set up, with overhead power points, lighting and a dust extraction system - to enable our group to hold meetings, classes, demonstrations, workshops and hands on events.</p> <p>The facility needs to include a meeting area of approximately 16 X 8 m to seat 30 – 40 members to observe a demonstration on a lathe, by a member or an invited guest.</p> <p>Adjacent needs to be a small kitchen for serving tea & coffee and toilets for women & men, with suitable hand washing basins. We currently meet one day a week in the Senior Citizens premises Midland, for how long we don't know.</p> <p>Our meeting generally last approx. 3-4 hours a week so our premise requirements are that we would be best suited to some form of shared accommodation.</p> <p>Currently we hire the hall at Swan Districts Senior Citizen's Association 1 The Avenue Midland once a week, but find this arrangement unsatisfactory due to having to move heavy lathes from an outside storage shed up a ramp into the hall onto tarps to protect the carpet flooring. The flexibility of having our own premises and being permanently set up would greatly benefit our members and the local community, who are free to participate as spectators.</p> <p>The mission of the Swan Woodturning Group is to promote, foster and practice the art and craft of woodturning in the Midland area encouraging women and men to be involved and enjoy participation in this traditional craft.</p>			1 The Avenue	The City's facilities can be found on the website. Enquires can be made through facility.bookings@swan.wa.gov.au or via the Community Development Officer.
I don't know of any services in midland other than the ones in the library	1		49 Helena St, Midland WA 6056, Australia	There are a number of organisations that provide services in the Midland local area. These include, but are not limited to, SCYS, Swan Community Care and Swan Active Midland.
I know there is a walking group in the area who walk every week but I don't know how to join			19 The Crescent, Midland WA 6056, Australia	Midland Gate has 'mall walking' which is a weekly walking group. Midland Gate can be contacted on 9250 3688 to join.
My carer takes me @ her own expense to social events because I cannot afford it.			39 The Crescent, Midland WA 6056, Australia	Noted. The City does facilitate some community transport. Further information can be found via https://www.swan.wa.gov.au/Your-Services/Community-Care/Out-and-about-services/Community-transport

I like quiz nights and bingo nights in Midland. I wish we had a bowling alley or roller blade rink as another activity.			2 Templeman Pl, Midland WA 6056, Australia	The City can encourage these types of business to invest in the area; however the City has no authority to provide these services. Adventure Golf has recently opened up in Midland on the Crescent, with 18 holes of mini golf to enjoy.
Bowling alley, ice skating, kids play centre, snooker place, something interesting to do on a regular basis.			83 Eddie Barron Dr, Middle Swan WA 6056, Australia	encourage these types of business to invest in the area; however the City has no authority to provide these services. Adventure Golf has recently opened up in Midland on the Crescent, with 18 holes of mini golf to enjoy.
There needs to be a sexual health clinic in Midland or practitioners. There is NOTHING available - no specialist services. GPs are not sexual health practitioners and this is a very very serious issue.	3		3 Lloyd St, Midland WA 6056, Australia	There are several health professionals which provide sexual health care including Marie Stopes, Midland Women's Health Care Place with partners with Sexual Health Quarters and GPs at GP Superclinic who specialise in sexual health.
Midvale Neighbourhood Centre is available for groups to use free of charge. It has a lovely play room, kitchen, lounge room and small outdoor area. Perfect for small groups to use. Contact CLAN Midland 9250 6335 for more details.	1		44 Mathoura St, Midland WA 6056, Australia	Noted.
CLAN Midland Inc. is located at 36a Mathoura St Midland and provides family support for families with children under 12. See www.clanmidland.org for more details.			36A Mathoura St, Midland WA 6056, Australia	Noted.

Social Services

Place Activation and Community Events

Comment	Like	Dislike	Location	Action/Response
<p>The City should start a weekly summer concert series for free. Along the lines of Subiaco and Nedlands.</p> <p>The City should start a verge side competition. If ratepayers request a native waterwise garden on their verge, the City should provide it.</p>	1		Viveash WA 6056, Australia	<p>Noted. The City supports community groups who run these community led projects.</p> <p>The Rural Properties Revegetation Program offers native plants free to City of Swan residents whose property is 4,000 square metres (1 acre) or greater in size.</p> <p>Residents can collect up to half a cubic metre of mulch from either the Bullsbrook Recycling Centre or the Recyclable Goods Drop Off Days, dependent on availability. This equates to a 6 x 4 trailer load. Free mulch is subject to availability and given out on a first in best dressed basis.</p> <p>It is possible to request that the City plant a tree at no cost. Available trees are listed on the website and are subject to availability, supply and budget. The City's program is designed to improve streetscapes by planting trees to provide shade, improve air quality and offer habitat and food for native animals. Planting is completed in winter, but requests may be placed at any time of the year by calling the City on 9267 9267.</p>
<p>Midland needs some twilight markets that community groups can attend and connect neighbours, especially on Friday nights. The Twilight markets can have food vans, dancers and music. Businesses around the markets can stay open later which helps the local economy. Kalamunda Markets are a good example.</p>	5		31 The Crescent, Midland WA 6056, Australia	<p>The New Midland Markets commenced on Sunday 4 October 2020 and will be held weekly in the Swan/Landgate Morrison Rd carpark.</p> <p>The City has negotiated a Lease Agreement which benefits and supports the new Operators in providing reinvigorated markets, which will include most of the previous stallholders as well as new ones.</p>
<p>Midland needs a new (or thoroughly revamped) growers market. The City of Swan should make any appropriate space available without exorbitant rent prices. Perhaps Tuohys Gardens, or the Crescent. It needs to have plenty of organic and locally grown/made produce, interesting live music and entertainment and be an appealing place to spend a morning (such as Hilton markets).</p>			Uniting Church of Australia, 49 Helena St, Midland WA 6056, Australia	<p>The new location does not require any road closures and is more visible to passers-by. The location can be reviewed in the future and the City may accommodate a change of preferred location.</p>
<p>I think the Midland Sunday markets should be held at the workshops.</p> <p>Undercover in winter</p> <p>No need to close roads off</p> <p>Purpose built area for people</p>	3		73 Foundry Rd, Midland WA 6056, Australia	
<p>The introduction of a farmer's market at the railway workshops is something that many locals would be interested in. The current markets on a Sunday are incredibly poor in comparison to well run markets like Manning or Subiaco markets.</p>	2		6 Centennial Pl, Midland WA 6056, Australia	

More live performances here. COS could cooperate with local venues to promote local music. A designated live music festival and various ethnic celebrations. Encourage the performing arts here.			5 Old School Ln, Midland WA 6056, Australia	The new Midland Markets will incorporate performers and arts & crafts.
I would love to have some live music (maybe local) in the afternoon on the weekend where young/ people can hang out and meet others in the community.	1		35 The Crescent, Midland WA 6056, Australia	The City supports this idea as a Community-led initiative.
Sunday Markets The Society would support retaining the growers market on Great Northern Highway, as one way of keeping the centre of gravity in the original town centre. Further 'pulls' towards Midland Gate should be discouraged, as that policy has been a major cause of the decline of the Old Town Centre.			Midland	The New Midland Markets are operating in a central Midland town centre location which, hopefully, will contribute to enlivening and reinvigorating the Midland CBD, in what is the old Town Centre. Retailers may open for business during the Markets due to the increased numbers of people in the town centre, which in itself will serve to attract more people.
Promote local businesses like Grand Central Hotel. They have live bands on the weekends and this needs advertising to bring in outside visitors. Clean up the carpark here too?	5		36 Helena St, Midland WA 6056, Australia	Council's Social Media policy does not permit promotion of businesses, unless there is a partnership in place with Council.
The laneway should be a thriving area, this was supposed to happen a few years ago, time to follow through now with incentives			3 Stafford St, Midland WA 6056, Australia	Fragmented ownership is not under the City control. The City can facilitate conversations between interested landowners.
The City of Swan should have incentives such as rate relief for the economic rejuvenation of Old Great Northern Hwy so that verandahs can be replaced on heritage buildings and the buildings renovated			12 Old Great Northern Hwy, Midland WA 6056, Australia	Noted. The City does have rate discounts for heritage listed properties.
We all know businesses come and go, shops open and shops close. What we don't need is the City trying to be property developers with ratepayers funds. What is the future for the long term empty buildings in the CBD, Workshops, the City owned Bankwest building and the ever decreasing demand for the Landgate building.			6 Centennial Pl, Midland WA 6056, Australia	The City is working hard with businesses to assist them during COVID-19. The outcome will be felt for the next 8-10 years. The landscape is changing for businesses as a result and the City is monitoring those changes to identify how to assist these changes. Workshops are still subject to discussions with DevelopmentWA, therefore not under the City control at this point.
I have suggested to the new Vietnamese restaurant here, and of Bangkok Noi down the road, and would of Zaika too, to have outside seating. The City should make it easy for cafes and restaurants to have outside seating licences. It invariably increases patronage.			9 Old Great Northern Hwy, Midland WA 6056, Australia	This is an option for the shops. More information can be found on the City's website via https://www.swan.wa.gov.au/Business-support/Setting-up/Types-of-businesses/Food-business/Alfresco-dining

<p>The Crescent would be perfect for a walking street (closed to vehicular traffic). Midland needs more vibrancy, outside eating, small shops, walking , cycling and having sections dedicated to such social interactions, where people are inclined to linger and explore would boost Midland’s life and tourist appeal.</p> <p>Midland, with its old buildings and history, has the potential to be the next Freo.</p> <p>This requires getting people out of their cars and experiencing more than just major shopping centres.</p>			<p>18 The Crescent, Midland WA 6056, Australia</p>	<p>The Midland Activity Centre Plan has identified ‘Main Street Edges’ in Map 6 which encourage active uses to create a more vibrant street. The Crescent has been identified as a ‘Main Street Edge’.</p>
<p>Hyper Arts Program</p> <p>The Society strongly recommend retain HyperFest on Midland Oval in order to retain the scale and interest.</p>			<p>Midland</p>	<p>Agreed. The oval has been planned with the Youth team to ensure events into the future. The open space can take up to 10,000 people.</p>
<p>Midland Railway Workshops</p> <p>The Society has long advocated a Railway Heritage Centre, which still has the opportunity to be the best in the Southern Hemisphere and attract worldwide tourism. Additionally we have been involved with advocacy for a Comprehensive University Campus, which is even now showing early buds, in the shape of Curtin Uni’s School of Medicine.</p>			<p>Midland</p>	<p>Noted. Curtin University Medical Campus opened up in November 2019.</p>

Social Services

Schools and TAFE

Comment	Like	Dislike	Location	Action/Response
<p>This is actually the Midland Learning Academy for at risk youth, not the Steiner school. There should be consultation with the department of education on future plans for reopening this site as a primary school (with renovations to make it attractive and safe) which would be a better use of the site for a growing population.</p>			<p>39 Spring Park Rd, Midland WA 6056, Australia</p>	<p>The City works in consultation with the Department of Education in regards to the need of primary and high school. The trigger for schools is reliant on the population of an area. As an established area, the Midland Local Area is generally well serviced by existing schooling facilities, with no need for additional schools currently identified.</p>
<p>Woodbridge Primary School is a great school. Terrific teachers, principal, deputy principals and community. Please advocate for our school to not have additional transportables placed on our children's play area. There is no parking to accommodate these extra numbers. I have been accosted a number of times, when parked legally, about taking parking spaces from residents. Our kids need space for nature play and the many programs to encourage outdoor activity. This will be reduced with demountables.</p>			<p>Amherst Rd After Montreal Rd, Woodbridge WA 6056, Australia</p>	<p>The City has limited authority on the placement of demountables on school sites. We can encourage and work with schools and the Department of Education to investigate parking allocation and parking management practices.</p>
<p>More art classes (TAFE midland no longer offer art classes). Parking can be difficult to find and potholes need fixing in Midland quickly.</p>			<p>Block G, Middle Swan WA 6056, Australia</p>	<p>The Hyper Series is an arts program of two main programs including HyperFest; an annual large scale music festival and HyperVision; an annual visual art exhibition and competition, both held in Midland.</p> <p>Regular art classes are held at the Midland Junction Arts Centre.</p> <p>for all ages inclusive of:</p> <ul style="list-style-type: none"> -Portrait, painting, oils, watercolours -Pottery -Weaving -Jewellery making -Ceramics -Print making -Dance classes -Drawing -Paper making -Screen printing -Photography -Stitching <p>These classes incur a charge, limiting whole community inclusion and access.</p>

<p>Midland requires and deserves proper tertiary educational facilities. We now have Curtin University School of Medicine, Nursing and Allied Health programs but we still need a broad-based campus offering a range of educational opportunities, such as five fully fledged Universities in the Western suburbs offer.</p>			Midland	<p>The City Is not responsible for the provision of tertiary education. We can only advocate for these facilities when the population trends suggest a need.</p>
<p>The Society with many others lobbied on Committee with the MRA for the development of a mixed campus incorporating TAFE engineering with University Engineering courses and integrating them with the Railway Heritage Workshops, as a living working environment.</p> <p>Tertiary education facilities should ideally be located within the Railway Workshops with the mix as mentioned including Information Smarts/ Library services, to introduce a thriving exciting a vibrant campus environment.</p>			Midland	

Jobs and Shops

Parking in centres

Comment	Like	Dislike	Location	Action/Response
Paid parking in midland is disadvantaging small traders who aren't in the big centres. It is unfair and unacceptable to functionally privilege shopping centres through City of Swan actions in putting paid parking through the town centre. Parking should just be time limited without a price, with the ability of shop owners to provide evidence of infringement to council employees, as this would remove the need for council employees to actively monitor parking. This would also help activate midland.			6 The Crescent, Midland WA 6056, Australia	The Midland Access and Parking Strategy was adopted by Council in 2013 following approximately four years of investigation and consultation. The Strategy is a broad document that sets parameters and actions to improve access, regulate parking, and move to a more sustainable situation.
Parking meters in the old part of Midland must be withdrawn to help that area recover economically. I would like to see a cafe/pub/restaurant/market vibe in that part of Midland. We have the train station a short walk away and it is under utilized in this regard. In Freo, people pour off the train on weekends for food, drink and entertainment. We should be trying to get the same thing here. Night markets would be a great idea in the summer months. THERE MUST BE A PLAN FOR THE RAILWAY WORKSHOPS	1		28 Holywell St, Middle Swan WA 6056, Australia	The primary objective of the Strategy is a focus on customer parking in the Midland area to support the local business economy. Generally, on street parking is provided with restrictions i.e. time limited to encourage turnover and discourage longer term parking. On street parking in close proximity to businesses should be prioritised for customer parking.
I would love for the parking meters to be abolished. If I head into the heart of Midland I like to make the most of it e.g. go to Slater and Gartrell, visit the op shop, have a coffee. Or even head to a cafe for lunch. 1 hour free parking is not enough and I don't want to pay for parked when I am paying for goods and services so I just don't go. A lot of people feel like I do and the small businesses of Midland are suffering. We need the parking meters gone!	1		58 Charles St, Midland WA 6056, Australia	
Parking provisions for the library are woefully inadequate. I should be able to use the library for more than an hour without having to pay for parking. When the library was moved from where it used to be the vast car park was removed and the council sold the land for development. Residents should not be discouraged from using library services due to cost considerations. I am appalled at the effect which paid parking is having on the town centre.			Midland Library 45 Helena St, Midland WA 6056, Australia	
Really love the new carpark. So easy to get into and out of.	1		63 The Crescent, Midland WA 6056, Australia	Noted.
The current parking regime is scaring customers and shopkeepers away from old Midland town centre. Recently one shop keeper closed her store because they were sick of getting parking fines. There is not enough business in the old town centre of Midland to justify such a strict parking regime especially as parking is free at Midland Gate, so everyone goes to Midland Gate.			5 Keane St, Midland WA 6056, Australia	There is no focus on car parking for business owners and employees as this should be considered as part of the parking requirements contained within either the property itself or the terms of the lease. If onsite parking is not available, City off street parking facilities should be utilised.

Complimentary parking scheme to be set up for people with ACROD stickers	1		1 Stafford St, Midland WA 6056, Australia	The City provides a range of paid and free ACROD parking options throughout the City, as do other car park operators.
Having recently come to this area to live I cannot comment on much. However, the parking near the medical centre could be improved as it's not much fun going back and forth to feed the metre. As far as bushland is concerned protective burning would make it safer if a bad day fire was to happen.			6 Centennial Pl, Midland WA 6056, Australia	Noted. The City has guidelines for prescribed burning as part of a preventative to bushfires.

Jobs and Shops				
Comments regarding private shops				
Comment	Like	Dislike	Location	Action/Response
I shop at Coles mostly and use the bus to get around. Make midland safer for the aged population by enforcing unruly behaviour			Kiosk KK013, Midland Gate Shopping Centre, 274 Great Eastern Hwy, Midland WA 6056, Australia	These comments will be passed onto the Midland Gate shopping centre managers. The Council resolved at the 12 Feb 2020 to undertake a trolley collection trial in the Midland area and report back to a future meeting of Council with the results of the trial. Due to Covid19 this has not been brought back to Council yet.
There shouldn't be any self service to improve employment.			47 The Crescent, Midland WA 6056, Australia	
Too many trolleys are in the streets. They need to be collected regularly			Shop 99, Midland Gate Shopping Centre, Great Eastern Hwy, Midland WA 6056, Australia	
I use woolworths, dymocks, kmart, coles, Millars, food court, clothing and chemist warehouse.			43 The Crescent, Midland WA 6056, Australia	
Need to encourage new and emerging industries into the area. These include information technology, services, hospitality and emergency industries both locally, Australia and worldwide. Eg. information technology centre and reopen training centres for apprentices in transport.			Kiosk KK013, Midland Gate Shopping Centre, 274 Great Eastern Hwy, Midland WA 6056, Australia	
Midland shops need more shoe shops			Shop T105A, The Crescent, Midland WA 6056, Australia	

There needs to be more lighting around Midland Gate, when I walk home from night it feels very dark.	1		kk34, 274 Great Eastern Hwy, Midland WA 6056, Australia	Continued.
People need to pick up the trolleys at Midland Centre			Kiosk KK013, Midland Gate Shopping Centre, 274 Great Eastern Hwy, Midland WA 6056, Australia	
Always looks displeasing and sometimes disgusting. Could use a remodelling or just an update in general	2	1	Midland Station, Midland WA 6056	
I shop at Coles mostly and use the bus to get around. Make midland safer for the aged population by enforcing unruly behaviour			Kiosk KK013, Midland Gate Shopping Centre, 274 Great Eastern Hwy, Midland WA 6056, Australia	
At the cinema have nachos with cheese, salsa and jalepenos as this would go down so well a little meal at the cinema			46 The Crescent, Midland WA 6056, Australia	
Centrepoint needs an upgrade! It's known in the neighbourhood as 'knife point' because of the huge amounts of unsavoury people who flock there from the train. Bring in some nice shops and cafes!	1		Centre Point Centre 307 Great Eastern Hwy, Midland WA 6056, Australia	These comments will be passed onto the Centre Point shopping centre managers. The Council resolved at the 12 Feb 2020 to undertake a trolley collection trial in the Midland area and report back to a future meeting of Council with the results of the trial. Due to Covid19 this has not been brought back to Council yet.
Ensure there are trolley control measures activated for Centrepoint - coin or token operated etc. to reduce the roaming gangs of trolleys which end up all over town, and discourage people from using them as temporary seats = unhygienic for shoppers and costly damage to business				
Shops are okay but there is a bit of riff raff who hang out there because of the proximity to the train station.				
Provide bins, plant trees and maintain gardens - easy to make this an attractive shopping centre inclusive of carpark - reduce the rubbish that ends up blowing down GEHway. Put shade awnings or some form of heat/sun protection over the ATMs (or better yet - move them back to the undercover walkway) as the heat and glare in summer is intense, and there is narrowed access to get to the ATMs from the position they are now.				
More bins need to be provided & regularly emptied. Council needs to engage with local businesses e.g. Centrepoint shops to keep their premises tidy and encourage and employ people to pick up rubbish. Local businesses need to keep their yards clean and tidy or properly screened with landscape planting especially where they are near residents.				

Jobs and Shops				
Midland Town Centre				
Comment	Like	Dislike	Location	Action/Response
This strip of empty shops has potential to be a lively cafe strip.			9 Old Great Northern Hwy, Midland WA 6056, Australia	There is no shop vacancy at this location.
Enable restoration of 'old' Midland (from Town Hall and along Old Perth Road) as a cafe/resturant village c.f. those of Albany Highway, East Victoria Park, High Street, FRemantle and Beaufort St, Highgate.	1		312 Great Eastern Hwy, Midland WA 6056, Australia	The train station will be relocated to Cale Street and some public works in the public realm will be undertaken by Metronet and the City.
I think the area around the train station should be looked at and perhaps have some nice restaurants / bars to attract more clientele / tourists since so close to swan valley. Perhaps a micro brewery	1		11A Hamersley St, Midland WA 6056, Australia	The Midland Activity Centre Structure Plan designates 'Main Street Edge' (Map 6) which encourages ground floor active uses such as restaurants with alfresco dining and bars. Old Northern Highway is highlight as a 'Main Street Edge'.
Either move bus stop or install trolley bay away from ANZ	2		The Crescent Before Sayer St, Midland WA 6056, Australia	There is no trolley bay in this located.
Would be nice to see the shopfronts along this strip of Great Eastern Hwy to get a new facade. Would make the area look nicer especially since the new shopping centre upgrade etc.	1		287 Great Eastern Hwy, Midland WA 6056, Australia	Noted. These properties are privately owned.
Need more things to do such as bowling and nightclubs. Like the quiz nights at 7th Ave and bingo at Midland Sports Complex	2		25 The Crescent, Midland WA 6056, Australia	Noted. This is up to private investment. A pop up mini golf business is now on Cale Street.
There is far too much litter in particular too many abandoned shopping trollies left in this area.	5		25 Templeman Pl, Midland WA 6056, Australia	The Council resolved at the 12 Feb 2020 to undertake a trolley collection trial in the Midland area and report back to a future meeting of Council with the results of the trial. An item is scheduled to go to the March 2021 Ordinary Council Meeting which will report the findings to Council.
Awesome shops - Simply Secondhand records, Carpe Coffee, Collections hair - all these places are locally owned and run, and need our patronage and support. Local spaces are a great indication that community is building great connections and thriving.	1		7 Spring Park Rd, Midland WA 6056, Australia	Agreed.

<p>Regarding the closure of businesses in the Old Midland Town Centre,</p> <p>The growth of large format retail shopping centres like Midland Gate, has however drawn customers away from traditional street based retail shops, reducing pedestrian activity in the public realm. These retail nodes also attract high volumes of private motor vehicles and are surrounded by large expanses of car parking that further separate pedestrian activity from the public realm. Traditional street-based retail in the Midland CBD has experienced poor performance, with some parts of the centre characterised by low quality urban form and perceptions of anti-social behaviour, can be also attributed to the closure of Great Northern Highway which directly led to a 'dead-heart' where formerly the "High St" thrived. This also facilitated the development of Midland Gate, effectively to the detriment of the local heritage business and retail owners on the Great Eastern Highway, Helena Street and Great Northern Highway.</p> <p>Planning Blight has ensued such that the original retail heart of town - Old Great Northern Highway, Great Eastern Highway between the Town Hall and Cale Street, Helena Street, etc. now needs council input to assist with buildings being done-up to help the businesses and to lift some civic pride in the administrative centre of the City of Swan.</p> <p>We agree Place Making opportunities exist, and the Society has lobbied over decades for re-instatement of the one & two storey verandahs on the Goldrush period retail buildings on the above streets. We agree that tree planting is required, as was clearly identified and agreed by all parties at the 1997 Midland Charrette.</p>			Midland	Noted. The City is investigating streetscape improvements in Midland. The City is working with Metronet in regards to any streetscape improvements around the new train station on Cale Street.
<p>The two-way-pair for Victoria St and Great Eastern Highway needs to be revisited - both roads could operate as a two-way, speed-reduced inner city road. This was an efficient business friendly, pedestrian-friendly proposal for Midland town centre which allowed frontage access for businesses on Victoria St and GE Highway and facilitated pedestrian movements across both roads - agreed at The Midland Charette in 1997.</p> <p>Great Eastern Highway is now slowed in Mundaring. A similar reduced speed limit is needed in Midland- a Regional Centre (and Guildford too) to allow pedestrians to move around the town more easily and safely. The priority of attempting to push motor vehicles through the town as fast as possible really has to be retired. There are major by-passes all around Midland and Guildford, with more underway, including Lloyd St with the Helena River Bridge now having funding. These major retail streets in Midland need traffic calming, which could include street furniture, al-fresco dining, street trees and reinstatement of verandahs.</p>			Midland	These roads are currently located within the Development WA. The City agrees that the streets should be pedestrian friendly and when the land is handed back, the City can consider improvements.

<p>We support the concept of Neighbourhood Centres, but suggest also that Bellevue South should be considered for investigation, possibly along with Woodbridge South and Viveash.</p>			<p>Bellevue</p>	<p>The draft Local Planning Strategy does not identify the need for a new neighbourhood centre in South Bellevue.</p>
<p>Midland Central is coloured pale yellow on Fig 7, but there is no key to explain what that means. The Society reiterates that the heritage retail buildings from the Goldrush period on Great Eastern, Great Northern Highways and on Helena St should be recognised and restored, as an active campaign to celebrate Midland's assets. This would bring tourism and visitors, as a Goldrush period town centre less than 20km from Perth and 10 minutes from the Airport will be of great drawcard to local and international visitors. The verandahs will bring welcome shade, as intended, and many gaps could be planted with verge trees which will all act for traffic calming and revive Central Midland's retail heart. Small business generally cannot afford the high rents in Midland Gate, so this approach will facilitate a wide range of service and retail businesses, as well as tourism and demand for accommodation. The area however is not all of one character, as is recognised in the Draft Guidelines which break Central Midland into several parts.</p>			<p>Midland</p>	<p>The pale yellow is the land in the Midland Activity Centre Structure Plan.</p> <p>The City will be reviewing the Local Heritage Survey in 21/22 and properties can be nominated through that process for review.</p> <p>In the interim the City is reviewing 36 properties in Midland that were nominated for heritage review in 2020.</p>
<p>MRA: The redevelopment along The Crescent under the MRA guidelines has not been a runaway success. There is not much Urban grain or vitality, although most of the properties, mixed use appear to be leased or occupied. Design Guidelines in themselves cannot create good design. Again it is a case where very few if any, architects were engaged in designing these buildings and we have a melange of mediocrity. It is hoped that future development will display more rigour and more imagination.</p>			<p>Midland.</p>	<p>Noted. The City will be reviewing the Development WA (formally MRA) design guidelines as the land will be handed back to the City.</p> <p>Furthermore the City has adopted POL-LP-1.12 Design Review which will require major development under the policy to be reviewed by the a panel for qualified designers.</p>
<p>Shopping trolleys are a blight on the town. Council should be taking a stronger position on this matter given the ongoing environmental, social and safety issues involved. The responsibility for supermarkets and shopping centres to keep their trolleys on their property needs to be strongly enforced by the City.</p>			<p>Midland</p>	<p>The Council resolved at the 12 Feb 2020 to undertake a trolley collection trial in the Midland area and report back to a future meeting of Council with the results of the trial. Due to Covid19 this has not been brought back to Council yet.</p>

<p>Local Centres: LC6 is identified here as Midland North, and certainly Great Northern Highway was one of the High Streets. The Society agrees that this strip should be encouraged to thrive and that zoning should allow retail along the Highway as was traditional Ribbon Retail Development.</p> <p>However the closure and consequent discontinuity of Great Northern Highway is ignored. Closure of the Highway had immediate and severe impact on through traffic and consequently in the business of, for example, the Service Station at the junction of Spring Park Road and Great Northern Highway, at that time in the ownership of Ascension Parish, and on many other businesses on Helena Street and Great Northern Highway. Helena Street was known as the busiest retail street in WA until the closure of Great Northern Highway and the closure of the WAGR Midland Workshops.</p> <p>Installation of parking meters along Great Northern Highway has discriminated against local retail and commercial business in the old Town Centre, as parking in Midland Gate is provided free. These meters should be removed.</p>			Midland	Noted. As a result of Covid19 meters were turned off however, businesses have lobbied council to turn on the meters to assist with patronage turnover at their businesses. As a result meters have been turned back on.
<p>No more large-format retail is needed. The growth sector is On-line sales. Making the older areas of the town centre more appealing will provide for a place people can walk and interact rather than the drive-in-drive-out retail warehouses currently being endlessly built.</p>			Midland	Noted.

Movement				
General Streetscape improvements				
Comment	Like	Dislike	Location	Action/Response
Tired streetscape on Old Great Northern Highway and Helena Street needs enhancing.	3		4 Old Great Northern Hwy, Midland WA 6056, Australia	Noted. The City has undertaken work to review the current public domain in Midland and what improvements are required. Part of this area is still under Development WA and once the land is given back to the City a coordinated approach can be undertaken. The City of Swan managed area is subject to the Midland Activity Centre Structure Plan.
The City of Swan needs to implement a comprehensive vision for the Old Town Centre including for the area of Old Great Northern Hwy and Great Eastern Hwy that includes Tuohy Gardens with improvement for the streetscapes and amenity including the planting of trees, retention of heritage buildings, historical plaques and signboards, access for pedestrians and cyclists, improved street lighting and furniture, provision of alfresco dining, boutique retail and community spaces.	3		Great Eastern Hwy Before Tuohy L, Midland WA 6056, Australia	Parts of Great Northern Highway and The Crescent have been designated as "Main Street Edges" which promote active uses on the ground floor to activate the area. The City is intending to upgrade the street lighting infrastructure along Old Great Northern Highway in within the next 3-4 years (subject to funding). The City is also planning to relocate the entrance to the Midland Library onto Old Great Northern Highway and create a new courtyard space and artistically designed entrance, in order to activate this precinct and improve amenity. Metronet will undertake some minor streetscaping surrounding the station. It is not expected that this will extend north of Victoria Street. The City will undertake some landscaping plans along the route between the train station entrance and Midland Gate for future consideration.
Destruction of streetscapes - Demolition and building sites need to be properly managed to prevent ongoing eyesores and Planning Blight like the Midland Inn site and sites along Morrison Road. The City needs to employ and support people who will enforce fines and court action. Again, enforcement of a reasonable standard for vacant sites and encouragement of interim land uses will assist.			Morrison Road, Midland	Under section 311, of the Building Action 2011 the building materials that on site that are as a result of the demolition need to be removed from the site. If the owner does not comply the City can issue a Building Order under Section 110 The City does employ compliance officers who investigate these matters.

Movement				
Road requests				
Comment	Like	Dislike	Location	Action/Response
Restore little Harold Street to be through road as it was in 1950's			1 Little Harold St, Bellevue WA 6056, Australia	A Little Harold Street will be connected through to Harold Street. This street will be one way due to road reserve width limitations.
It is essential another access road connecting the whole of Bellevue to Gt Eastern Hwy is constructed over the rail line. Robinson Rd is current access to Gt Eastern Hwy, and have heard of plans to close this due to Rail Car Manufacturing plant. This will cause traffic mayhem in Midland and Clayton St unless there are plans for another crossover to GEH close by. Robinson Rd services Koongamia and Helena Valley as well.			1 Harold St, Bellevue WA 6056, Australia	The City is aware of the likely continued growth of traffic on Clayton Street and Bellevue area. The City is investigating potential future treatments.
I think a road should go around here so that it's an easy way for people to cross	1		1 Harold St, Bellevue WA 6056, Australia	
I travel regularly from High Wycombe to via Stirling crescent to Lloyd Street. Stirling Crescent needs urgently upgrading. It carries large trucks and road trains. The verges have deep holes and damage small cars. Lloyd street and Stirling Crescent should be connected. The T intersection at both ends of Military road are very dangerous.			Stirling Crescent, Midland	Stirling Crescent is planned to be upgraded both north and south of the Great Eastern Highway Bypass. Stirling Crescent will be severed by the upgrade works being undertaken by Main Roads to the bypass. This is likely to be done within 3 years. Traffic on Military Road is expected to drop significantly upon the construction and opening of the Lloyd street bridge.
There is need for a wider passage under Roe Hwy to accommodate better turning lanes (left into Rason Parade); bike lanes and isolated pedestrian passage.			61 Clayton St, Bellevue WA 6056, Australia	Roe Highway is under Main Roads jurisdiction. These comments will be passed onto Main Roads. The City is aware of the likely continued growth of traffic on Clayton Street and is investigating potential future treatments.
The traffic on Clayton St into and out of Midland is significant during peak hours in particular and impacts traffic onto Katherine St and Great Eastern Hwy enormously. How is Clayton St going to cope with increased residential traffic and this new Bunnings development.			Cnr Lloyd St & Clayton St Midland., Midland WA 6056, Australia	
Bad planning again, Cos just approve everything then try to fix up traffic stuff ups after the fact. Of course something needs to be done, the new Bunnings has exit in line with street to Spud Shed, so looks like plan is already underway.			5 Clayton St, Midland WA 6056, Australia	

Is there the infrastructure to accommodate the enormous increase in traffic flow from the Belle View Estate onto Clayton St especially with the closure of both the Helena St and Robinson Rd.			Clayton St After Pascoe St, Bellevue WA 6056, Australia	The closure of Robinson Road has not yet been formally advertised or support by Council. The City is aware of the likely continued growth of traffic on Clayton Street and is investigating potential future treatments.
Very difficult to cross this intersection from either side of Clayton Street			36 Wells St, Bellevue WA 6056, Australia	This land is owned by the DevelopmentWA. Once the land is handed back to the City we can investigate. City staff have commissioned surveys and are in the process of completing modelling at the intersection of Military Road and Clayton Street. This will inform the existing performance and any required upgrades of the intersection.
Corner of roe highway and great northern highway gets very busy because of Christian college. It's very dangerous just before school starts and finishes. Very hard for parents to get out of school			Great Northern Hwy After Roe Hwy, Middle Swan WA 6056, Australia	This is the responsibility of Main Roads. The school and Main Roads historically have discussed options to improve access and egress into the school, however the City is not aware of any plans to undertake works. These comments will be passed onto Main Roads.
When heading South on GNH there is a dedicated left turn lane which is not necessary. Both lanes should be able to go straight to reduce traffic backing up.		1	74 Bishop Rd, Middle Swan WA 6056, Australia	This intersection was designed with future consideration of the Lloyd Street extension. The intention is to direct traffic down GNH, along Bishop and down Lloyd Street as the primary route. The City is working on constructing the Lloyd Street extension over several years.
Can't turn right into depot from Bishop Road with a larger vehicle. At 4pm the whole roundabout is blocked. Lights need to be greener for longer.	1		72 Bishop Rd, Middle Swan WA 6056, Australia	The City is aware of the delays in the afternoon at the roundabout of Bishop and Lloyd Street. City staff will investigate the intersections crash history, conduct intersection counts and intersection modelling to determine if there an upgrade to the intersection is warranted and feasible. The City will liaise with Main Roads to determine if an improvement to the signal phasing at Reid Highway can be implemented simultaneously.
Intersection of Midland Rd and Clayton St is a blackspot. More trees need to be planted along Clayton St to continue the high standard planted by MRA			3 Stanley St, Bellevue WA 6056, Australia	Midland Road and Clayton Street do not intersect. If concern is regarding Military and Clayton, it is expected that the construction of the Lloyd street bridge will cause a significant redistribution of traffic away from Military Road.

Road needs resurfacing			12 Leslie Rd, Middle Swan WA 6056, Australia	The City resurfaces roads on a priority basis considering condition of the road and its' usage. The City is aware that Leslie Road has been damaged by tree root ingress. However, the usage of this road is relatively low in comparison to other roads within the City of Swan. Therefore, resurfacing Leslie road is on our 10 year plan, but not an short term priority. The City will monitor the ongoing condition of Leslie Road and aim to conduct resurfacing works in the future
Intersection between Military road and Clayton street is ludicrously busy. Needs a turning lane for turning traffic or traffic lights or /something/ as gets backed up with cars waiting to turn from Clayton to Military road and people drive dangerously as a result. May be ameliorated by putting Lloyd street through properly to Bushmead road.			36 Wells St, Bellevue WA 6056, Australia	It is expected that the construction of the Lloyd Street Bridge will cause a significant redistribution of traffic away from Military Road. This project has been announced as fast tracked by the State Government. The intersection of Clayton and Cowie Street has been upgraded to a roundabout to assist traffic exiting and entering the shopping area.
The traffic around Clayton st and Military Road up to Loyd st is often busy. It can take a while to turn onto Clayton st from Military road. The traffic coming out of the shopping area (Spotlight) causes issues as well. Having only one lane along this section seems to be inadequate. There needs to be some sort of traffic management installed at that intersection.	2			
Impossible to turn right during peak hours because of the traffic coming into Midland via Lloyd street. Please put a turning arrow on the traffic light.			19 Murace Pl, Middle Swan WA 6056, Australia	The City is planning to duplicate Lloyd street from Morrison Road To Bishop Road. During this process the intersection of Toodyay and Lloyd will be investigated and upgraded as required to improve performance and safety of the intersection.
The new development at Cranwood Crescent/Midland Brick is supposed to extended Eveline Rd(that goes past Old Swan Districts Hospital) into Viveash, that will give a new access point/way out in bushfire			68 Frederic St, Midland WA 6056, Australia	Noted.
Frederick is the main street a lot of people use to go into Midland so that you don't cross traffic. Would be making the problem worse if you close it, just bottleneck somewhere else.			68 Frederic St, Midland WA 6056, Australia	There is no proposal to close Frederic Street at present. Any closures of local roads require public advertising and consultation and consideration by Council, therefore if future proposals are made, residents have the ability to comment at the time.

Grade separation of Roe Highway/Toodyay Road and Toodyay Road Level Crossing to improve traffic flow on all approaches.			Toodyay Rd, Middle Swan WA 6056, Australia	Main Roads is planning the Orange Route in due course which includes resolution of the Roe/Toodyay intersection. This is a medium-long term project. For more information visit https://www.mainroads.wa.gov.au/projects-initiatives/projects/metropolitan/eastlinkwa/
The Roe Highway/Great Northern Highway intersection needs to be grade separated and then the southern portion of Great Northern Highway needs to be realigned with Lloyd Street, as this is the main north-south artery into Midland, not GNH.	1		27 Searle St, Middle Swan WA 6056, Australia	
Upgrade of GEH between Lloyd Street and Roe Highway to allow for turning lanes and landscaping, similar to the GEH widening project that took place in Belmont a few years ago. This is the main eastern entrance into Midland from the hills and beyond, currently it's not visually appealing and makes driving on GEH a nightmare if you are not in the left lane with the amount of people turning right with no gaps in traffic for them to cross. Dedicated PSP cycle lane would be very helpful here too.	1		179 Great Eastern Hwy, Bellevue WA 6056, Australia	Great Eastern Highway is a Main Roads WA controlled road. A work request will be raised to investigate this.
There is a bin in the road reserve which affect visibility.			Great Eastern Hwy Before Cale St, Midland WA 6056, Australia	This path and bin is within the DevelopmentWA area. Although not managed by the City a site inspection was undertaken and the bin is only 1m high which does not affect visibility.
It is difficult to turn on Great Eastern Highway from this car park.	3		Great Eastern Hwy Before Ferguson St, Midland WA 6056, Australia	Great Eastern Highway is managed by Main Roads WA and the carpark is on private property. These comments will be passed onto Main Roads.
Midland services a wide catchment and many rely on motor vehicles. The City centre is now so spread out that motor vehicle usage is essential. With The Avenue to link Sayer Street to Old Great Northern Highway, it is time to reinstate Helena Street to two way traffic to The Crescent in order to create a CBD loop that will link the shopping precinct through the oval precinct to the original town centre. nb. Vehicles regularly drive the wrong way along Helena Street.			285 Great Eastern Hwy, Midland WA 6056, Australia	Introducing an intersection where vehicles would be exiting Helena Street at the location the Crescent currently bends to intersect with Great Eastern Highway would create a hazardous intersection.
If you are coming off the ramp onto Great Eastern Highway travelling south and need to turn right into Horace Street, you have an unbroken line and three lanes of traffic to cross. This needs better design and you have to essentially break the road rules to get to the turning lane.			9 Rason Parade, Bellevue WA 6056, Australia	Great Eastern Highway is managed by Main Roads Western Australia. These comments will be passed onto Main Roads.
Flyover to connect Farrell Road with Eddie Barron Drive would allow traffic to move over Roe Highway without having to navigate traffic lights. Getting in and out of Midland for residents in Jane Brook/Swan View/Stratton and beyond would be quicker and much easier if they didn't need to cross Roe Highway at grade.			State Route 3, Middle Swan WA 6056, Australia	The City is aware that many residents east of Roe Highway must frequently cross Roe to reach Midland. The City of Swan will continue to work with Main Roads WA to ensure this is considered as part of any future works.

Reconnect Devon and Amherst Roads (subject to realignment of freight line)			13 Devon St, Woodbridge WA 6056, Australia	The City is not considering any works to realign Devon or Amherst. Such works would need to be considered as part of works planned by the Public Transport Authority. These comments will be passed onto the Public Transport Authority.
Gazette First Avenue road extension			19 Bayley St, Woodbridge WA 6056, Australia	There are no plans to extend First Avenue.
This is a dangerous intersection, especially when its peak school times.			121 Great Northern Hwy, Midland WA 6056, Australia	La Salle College generates a significant amount of traffic during school drop off and pick up times which can cause some congestion in the area for short periods of the day.
It's hard to turn onto Great Northern Highway at the intersection, especially at peak school times.			96 National Route 1, Midland WA 6056, Australia	As part of the current housing development occurring in Viveash there is a proposal to connect Eveline Road to Cranwood Crescent to provide an alternative route into the suburb for residents. The intersection of Eveline Road and Great Northern Highway is controlled by traffic signals.
A second lane heading north from Midland leading into the Bishop Road and Great Northern Highway roundabout would be great. Peak hour time's traffic is banked back up to Bassett Road. I want to turn right from Great Northern Highway on Bishop Road I'm forced to wait with everyone else going straight.	3		Great Northern Hwy Before Bishop Rd, Middle Swan WA 6056, Australia	The City is aware of the delays in the afternoon at the roundabout of Bishop and Lloyd Street. City staff will investigate the intersections crash history, conduct intersection counts and intersection modelling to determine if there an upgrade to the intersection is warranted and feasible.
This carpark is very chaotic and hard to navigate.			58 The Crescent, Midland WA 6056, Australia	This is private land.
It is difficult to turn right onto Morrison Road here because there is limited visibility.			Morrison Rd and Spring Park Rd, Midland WA 6056, Australia	When exiting Spring Park Road the visibility looking to the left is impacted by the (vertical and horizontal) alignment of Morrison Road. There is no verge vegetation restricting sight distances. To account for this difficulty vehicles turning right out of Spring Park Road have a median refuge gap allowing the movement to be made in two stages.

Morrison Road should be narrowed and slowed between Great Eastern Highway and Great Northern Highway - it is too wide and too fast. It should include a dedicated bike lane on either side. The current bitumen median is a waste of space and should be landscaped with trees and have breaks to allow access for vehicles to enter the road from both sides - safety to be provided by slowing the traffic. The current road widening requirement in LPS17 should be removed.			11 National Route 1, Midland WA 6056, Australia	The City is not planning any significant works to Morrison Road in this section at this time.
There should be less busy roads in Midland. There is no need for Morrison Road or Great Eastern Highway to be widened especially after the Lloyd St bridge is built linking Hazelmere with Midland Any apartments built along Morrison Rd should access Morrison Road and not have the access on the small residential roads such as Byers Rd			16 National Route 1, Midland WA 6056, Australia	Morrison Road is in the process of being widened through a Local Development Plan. Council has resolved to undertake several heritage assessments along Morrison Road before making a decision on the Local Development Plan.
No need for Morrison Rd to be widened as there is never any traffic congestion on the road and because the new Hazelmere-Midland connection at Lloyd Street will make this a less busy road between Midland and Guildford	1		28 Morrison Rd, Midland WA 6056, Australia	The City has engaged with a consultant to undertake the heritage assessments.
Don't widen the road, less traffic will use it with the road closure from Roe Hwy. There is a heritage house on the corner / Byers Rd that needs to be protected, and presumably access to properties that will be built on the demolished house sites. Instead plant trees in the centre median to enable a lovely avenue, shade and an attractive streetscape in line with the heritage values of the area that connects Midland and Woodbridge.			Morrison Road 39 National Route 1, Midland WA 6056, Australia	
Relocation large telephone pole on corner Morrison Rd and Byers Rd to a position further west on the same corner to enable safer vision of the Morrison Road Great Eastern Highway traffic lights and intersection.			Morrison Rd	A work request has been submitted to Telstra (reference number: P210209049090574).
Construct a vehicle underpass below the Midland Welshpool rail line off Devon Street to Homesdale Road to connect the two residential areas within the southern Conservation Precinct area.			Devon Street to Homesdale Road	A work request has been raised to investigate this issue.
Such a shame that the paving stencil pattern to the new roundabout is getting damaged from the large trucks riding the roundabout carting soil to the Belle View Estate.			Clayton St After Henkin St, Bellevue WA 6056, Australia	Noted.
There are a lot of potholes on this road behind 7th Avenue.			3 Stafford St, Midland WA 6056, Australia	A work request was raised for this and the potholes were fixed in February 2021.

Byers Rd needs to be local traffic only with only one access point - it is residential with old and newer buildings high foot traffic and mixed residential ages - along with William St and Poynton Ave who also have vulnerable populations in aged care and special needs students. William St needs traffic calming measures because of these population and service locations.			1 Byers Rd, Midland WA 6056, Australia	Byers Road is an important link to allow traffic to navigate on to Great Eastern Highway (GEH) with the assistance of traffic lights. Closing it would force more traffic to enter GEH at less safe, unsignalised locations.
Need extension to Bellevue urgently to facilitate infill and higher density. There is significant land to the north that is used basically as parking areas and low density light industrial. Rather than destroy Midland oval and cultural and historical heritage, get station done and redevelop land to the north as high density residential. This is better location for high density (close to rail and bus)			1 Bellevue Rd, Bellevue WA 6056, Australia	Noted. New Junction (Midland Oval) is already in the process of development and will provide a mixed residential and commercial uses in a high density fashion.
Reopen Great Northern Highway from The Avenue to Morrison Road. With left in and out at Morrison Road and roundabout at intersection of The Avenue and Great Northern Highway.			69 Old Great Northern Hwy, Midland WA 6056, Australia	Great Northern Highway turns into Keane St after Morrison Road.
Viveash needs urgently an alternative access via road, there is only one access at the moment and this is in case of an emergency unbearable, furthermore I experience everyday problems due to peak traffic at school Times and it's even unacceptable for this reason to have no alternative route	3		2 Trent St, Viveash WA 6056, Australia	As part of the current housing development occurring in Viveash there is a proposal to connect Eveline Road to Cranwood Crescent to provide an alternative route into the suburb for residents. This will provide an alternative access point in the event of an emergency.
The majority of Viveash residents are seeking to get to Great Eastern Highway, but they are thinking about making a road to Eveline road (great northern). This makes no sense, nobody will use that road, and they'll still just go past Le Salle College.				
A road running from Muriel to Eveline Rd right behind the school with a school pick up area would alleviate the congestion at school pick/ drop off times			3 Tyne Link, Viveash WA 6056, Australia	This location is a significant bushland site and the City is not intending to construct a road in this location.
I usually use a car sometimes bus or community bus			1A North St, Midland WA 6056, Australia	Noted.
I travel around midland using a car. Introduce trams and electric buses in the area.			13 Cooper St, Midland WA 6056, Australia	
Generally roads through Midland need calming, not widening.				Agreed.

Movement				
Traffic signals				
Comment	Like	Dislike	Location	Action/Response
What happened to the promised traffic lights at the intersection of Ferguson Street and Great Eastern Highway? Plenty of commitments from either side over the years and nothing happened.			Great Eastern Hwy Before Ferguson St, Midland WA 6056, Australia	<p>The intersection roads (GEH and Roe Highway) are State roads. This matter should be referred to MRWA.</p> <p>The City does not have the ability to control school bus movements, these are determined by the school.</p> <p>The City have commissioned surveys and are in the process of completing modelling at the intersection of Military Road and Clayton Street. This will inform the existing performance and any required upgrades of the intersection.</p>
The lights need to be greener on Great Northern Highway for longer to reduce congestion at Round about.			Great Northern Hwy, Middle Swan WA 6056, Australia	
We purchased in Viveash because of the one road in and out, crime is less because of it. I think a camera near the school would solve a lot of problems and even maybe have the buses pick up inside the grounds to keep traffic flowing.			68 Frederic St, Midland WA 6056, Australia	
Traffic lights would be good here.			96 National Route 1, Midland WA 6056, Australia	
Traffic lights or at the bare minimum a roundabout needs to be installed at this intersection. Doesn't matter what time or day you pass through here it's always heavily congested. Clayton Street being widen to dual carriageway both ways from Lloyd Street to Roe Highway would also be very beneficial. The streets here are not coping with the volume of traffic.			36 Wells St, Bellevue WA 6056, Australia	
Trying to turn right here is so difficult that it is causing people to take dangerous risks to cut in front of traffic. May I suggest lights or a roundabout? Something is needed at military road for the same reason.	1		5 Clayton St, Midland WA 6056, Australia	

Movement				
Speeding				
Comment	Like	Dislike	Location	Action/Response
Traffic calming needed - people hoon down this street to Morrison Rd. A school located on this street and backing onto the same land a second school - can this be made a 40km hour zone			18 William St, Midland WA 6056, Australia	The City will assess all locations where speeding has been identified as an issue, and where results of traffic counts indicate excessive speeding, the City will report these locations to the Police.
An entire suburb (many speeding and driving recklessly) funnelling past a school at peak times. Kids dodging cars and buses, 4WDs driving on the footpath beeping at each other. I've seen it all. The entire suburb has once access point. Bushfire? Something blocks that one road? No escape. This wasn't planned very well. You think it's bad now? Wait till the development comes and another 60 residential lots are added.	2		68 Frederic St, Midland WA 6056, Australia	The City generally does not install traffic calming devices. Speeding is a widespread problem across the City and Perth Metro area, and traffic calming incurs a high cost and can divert the issue to other streets in the area. Enforcement is the most appropriate action to mitigate inappropriate driver behaviour.
This corner has excessive hoon and dangerous driving behaviour. It is the most common access point for the entirety of Viveash and bottlenecks right next to La Salle College. It is highly dangerous as it is chaotic at school peak dropoff and pickup times and especially dangerous in the evenings with speeding and excessively loud hoon vehicles accelerating and burn outing around this corner. I suggest making Frederic Street a no-through-road to Muriel.	1		68 Frederic St, Midland WA 6056, Australia	
The areas are becoming more and more built up. We need to enforce the speed limit. Too many people think the speed limit is 60 and there is not enough signage - many people are confused. Smaller surrounding suburbs e.g. Hazelmere are now overrun with speeding vehicles treating small residential roads like main arterial roads.			3 Stanley St, Bellevue WA 6056, Australia	
Speed humps, round-about and/or chicanes are desperately needed in this area to reduce hoon behaviour especially close to schools. Many animals and roads infrastructure have been struck by speeding vehicles in the last 5 years, it is only a matter of time until a child is hurt.	1		1 Aquaviva Cir, Viveash WA 6056, Australia	
Traffic should be slowed and discouraged in Midland. the two way traffic for Great Eastern Highway and Victoria St should be brought back to slow the traffic the City of Swan should give incentives for the old heritage buildings along Great Eastern Highway to be done up as a lovely shopping strip that people will want to stop for			5 Keane St, Midland WA	
Construct traffic calming devices on First Avenue extension.		1	10 First Ave, Woodbridge WA 6056, Australia	

Cars are constantly speeding down Mathoura St every day. It is dangerous for people. Many families and older people walk down this street as they take their children to Midvale Primary School. We need to be safe and not a drag strip.	1		31 Mathoura St, Midland WA 6056, Australia	Continued.
Speed humps needed here. Sportsman always speeding in to parking.			45 Patterson Dr, Middle Swan WA 6056, Australia	

Movement				
Cycling				
Comment	Like	Dislike	Location	Action/Response
Clayton St and Katherine St are key cycling thoroughfares connecting communities such as Boya, Koongamia and Darlington with Midland. A PSP or improved road shoulders should be considered along Clayton St or Katherine St to provide a safer environment for cyclists and pedestrians. Currently the cycling shoulder on Clayton St stops at Katherine St. Improved cycling infrastructure would help connect hills residents to the new Midland Station and other activity points in the Midland area.	1		131A Clayton St, Bellevue WA 6056, Australia	Council approved the City of Swan Cycle Network Plan at the November 2020 council meeting. The Cycle Path Priorities in this area include: -Stratton to Midland Link Infrastructure upgrades aiming to improve cycling link from Stratton to Midland, which includes shared path upgrades on Lewis Jones Cross, new Toodyay Road bicycle-only path, Lloyd Street shared path upgrade, and improvement to on-road cycling along Templeman Place, The Crescent and Cale Street.
The only ones voting for this will be CAR drivers who can't stand the fact cyclists can go places that they can't. That's the advantage of travelling on foot or bike, and one shouldn't get penalised for it.....			17 Rason Parade, Bellevue WA 6056, Australia	-Viveash - Woodbridge
The only people voting for this (electrical pedestrian gates) will be the ones not using it. No one on foot or on bicycle would want to be held up by an early closing gate for a slow moving train (there are many slow trains) I assume the gate is designed to close when the train is a certain distance away. Cyclists who get held up here for an early closing gate will take risks on the road, to make up time, which would lead to more potential dangerous situations. They will be stressed & rushing...			17 Rason Parade, Bellevue WA 6056, Australia	Midland Cycling Link. Improvement to cycling link from the John George Trail along the Swan River foreshore in Viveash to Woodbridge Station and the Midland Rail PSP. Proposed improvement includes constructing a new shared path along First Avenue and providing a crossing facility at the intersection of Great Eastern Highway and First Avenue..
There is significant room within the railway reserve. (Install bike path to run in the reserve from Bellevue, (ideally the start of the historical railway trail) to the current midland station location. This will entourage people from Bellevue and Greenmount and beyond to cycle to the station. At the moment, the only" bike path" is along great eastern highway and there are lots of side roads to be crossed and it is always busy.	1		16 Edward St, Bellevue WA 6056, Australia	The City's Cycle Network shows that there is reasonable cycling conditions on and off road on Clayton Street.
Clayton St and Katherine St are key cycling thoroughfares connecting communities such as Boya, Koongamia and Darlington with Midland. A PSP or improved road shoulders should be considered along Clayton St or Katherine St to provide a safer environment for cyclists and pedestrians. Currently the cycling shoulder on Clayton St stops at Katherine St. Improved cycling infrastructure would help connect hills residents to the new Midland Station and other activity points in the Midland area.				There is no information for Katherine St in Koongamia as it is not located in the City of Swan. .

Movement				
Pedestrian				
Comment	Like	Dislike	Location	Action/Response
Pedestrians have to step out /off footpath before the can see if any vehicles are exiting the depot it a blind spot	1		74 Bishop Rd, Middle Swan WA 6056, Australia	A work request has been raised to investigate this.
The pedestrian crossing to Jack Mann Oval is in a ridiculous spot, as you exit the oval to cross Bishop Road the crossing is just below a bend in the road making it difficult to see / judge the cars coming around it.			74 Bishop Rd, Middle Swan WA 6056, Australia	The City has investigated the crossings. The crossing at the depot entrance is not considered as an issue as vehicles coming out of the depot will be at low speed. The other crossing from Jack Man Oval will not be relocated however the City will prune the bushes which will improve pedestrian sight lines.
Re-seal and re-curb concrete pathways along Ford St and Second Ave.			21 Ford St, Woodbridge WA 6056, Australia	The footpaths are in reasonable condition, with possibly a few panels that may benefit from minor maintenance. However, the road requires resurface in the coming years (this would require an overlay and kerb replacement at the same time). The City will monitor the condition of the road and action when appropriate.
Re-sea; and re-curb concrete pathways along Ford St and Second Ave.			Ford St, Woodbridge	
Build a proper and identified pathway to the other western railway heritage trail that goes up through John forest to create a proper loop trail			51 Albert St, Bellevue WA 6056, Australia	Due to the presence of an existing concrete footpath, the construction of a red asphalt cycle path is not an immediate priority for the City of Swan. However, the City supports this proposed route and will action on a priority basis along with other cycle paths in the City.
The last open drain left in the area along Toodyay Road between Roe Highway and Lloyd Street should be piped and covered. Not only does it look unsightly but not healthy.			99 Patterson Dr, Middle Swan WA 6056, Australia	This exact route along Lloyd St (terminating at Toodyay Rd) has been identified as a priority part of the 2018 City of Swan cycle strategy and the state's 2020 Long Term Cycle Network strategy. The City is looking at constructing sections of Dual Use Path over a number of years with support from the Department of Transport.
Re-seal, re-curb and install underground power in Chatham St.			Chatham St, Woodbridge	The City will monitor the ongoing condition of Chatham Rd and aim to conduct rehabilitation works in the future. However, due to the City's size, road rehabilitation works must be actioned on a priority basis to ensure the best use of funds for City of Swan community. The City does not undertake underground power projects due to the high capital cost. Power infrastructure is the responsibility of Western Power. WP has been trialling a program to replace power poles at the end of their useful life with underground power, and if the trial is effective, this may be rolled out City wide.

Refurbish timber decking of the footbridge over Helena River connecting Swan St to Chatham Street.			Swan St to Chatham St, Woodbridge	The old timber bridge decking for this bridge was already refurbished with concrete decking in mid-2017. In the most recent bridge inspection in November 2018, there was no indication of any issues and so no rectifications are planned.
An over pass for disabled and elderly and others. Really dangerous here and lots of traffic moving between Midland Gate and Middle.			Unit 12/55 Loton Ave, Midland WA 6056, Australia	The City is not planning to construct any overpass infrastructure due to the capital cost which is in the vicinity of \$1-2 million.

Movement				
Metronet and Train issues				
Comment	Like	Dislike	Location	Action/Response
Don't go by train anymore too hard as there are pedestrian crossing close by			Midland Station, Midland WA 6056, Australia	The train station is being relocated to Cale Street and will be designed to facilitate pedestrian access. The latest update can be found via https://www.metronet.wa.gov.au/projects/midland-station
Why is the Midland train station not being moved down opposite the hospital. Current plans still show a 450 my walk to the hospital after all the remodelling. Put the station at Cale St and a walkway over into the hospital. Stop spending a fortune for very little reward.	1		21 Hume Ct, Midland WA 6056, Australia	Noted. Relocating Midland Station between Helena and Cale streets maintains the railway's central role to work and community life in the area. There are currently buses that run between the train station and the hospital. It is likely that these will continue when the train station is relocated. The Midland Station project by Metronet has already progressed into the planning phase.
I think the new railway station should be closer to the hospital. Not everyone has a car to get there			68 Railway Parade, Midland WA 6056, Australia	
This is my most emphatic comment for Midland also: the current Midland train station MUST remain. It would mean death for so many businesses and services in the surrounding area otherwise. Also, several families use this for transport to school (Helena River Steiner School).			Midland Station, Midland WA 6056, Australia	
The Midland train station needs to be retained as a subline to the new proposed station. There are residents and business/workers who transit through daily, it has existing infrastructure that can be upgraded and it is located in a central position to access the old centre of town, CoS admin, services, markets and the unique specialty shops, restaurants and also homes. Don't forget: people live in central Midland within close proximity to the station.			Midland Station, Midland WA 6056, Australia	

<p>Railway Station Relocation</p> <p>Keeping a railway station at the current Midland station site when the proposed station relocation happens makes sense. No doubt the east end of Midland will benefit from the relocation, but it would be a great shame and waste for the west end of Midland to decline further due to loss of the station when an opportunity for a proper transport oriented development is coming up through redevelopment the current train station site. Closure of the Helena Street crossing flies in the face of all the policies aimed at better uniting the town across the freight railway line; itself an open wound.</p>				Continued.
<p>As soon as work commenced on the Metronet site, the remaining remnants of the old Silo were immediately destroyed. Why did this happen? Is the Metronet going to provide any form of artwork to recognise the old silo? Does this development meet the criteria of POLICY LP 1.10? If it does there will be \$500,000 for Public Artworks</p>			4 Elgee Rd, Bellevue WA 6056, Australia	Noted. The Midland Station project by Metronet has already progressed into the planning phase. The train station is not subject to the policy as it is not under City control however they will be doing their own improvements which may include some public art.
<p>If a station was built here, the quiet backroads of Bellevue would be overrun by buses linking the trains.</p> <p>The new Midland station will be so close, it will be a huge financial drain on society to even make up plans for another station 1km away. Not a good time to think about spending more unnecessary money. The hills residents can manage fine with the existing services & it is obviously more logical to have the final station / bus station in a central area such as Cale St. Maybe more buses..</p>			7 Rason Parade, Bellevue WA 6056, Australia	Noted. Metronet by State Government has already gone through the planning phrase. The current Midland Station will be decommissioned once the new train station is completed.
<p>A new station here will totally ruin the area. Bellevue is still a nice quiet area (when planes are not moving) and hasn't yet been SPOILED like much of suburbia. It is not needed as the new Midland station is getting closer. I ride my bicycle to the current Midland station in 6 min 40 sec from the crossing at Bellevue Rd !! 5.40 If I travel up G E Hwy. It's 3 times quicker than getting the bus. Come on people---- get off your arses, the fresh air will do wonders for you. Enjoy the peace</p>			7 Rason Parade, Bellevue WA 6056, Australia	This is a State Government decision. Currently there are no plans for the line to extend past Bellevue. This has not been identified as an advocacy priority by the city.
<p>The new Midland station has already been finalized, and Cos needs to continue to support a station at Bellevue as promised by Metronet.</p>			7 Rason Parade, Bellevue WA 6056, Australia	
<p>Would be great if state government would actually give us BELLEVUE station back, rather than mucking about moving midland station.</p>			7 Rason Parade, Bellevue WA 6056, Australia	

<p>Note Re Fig 5: The current MetroNet policy will see a passenger railway from Bayswater to Ellenbrook. The Chamber of Commerce strongly suggests looking at immediate reestablishment of a passenger railcar service; ideally hybrid electric H2 cells, on the existing Rail line servicing Stratton, Jane Brook, Herne Hill, Millenden Junction, Baskerville, The Vines, Ellenbrook. Averley, Bullsbrook etc, and much better servicing the unity and functioning of the City of Swan. Ultimately we should have both lines, but the self powered railcar option solves so many problems; allowing freight and passenger lines to share track, vastly reduce infrastructure costs, and putting WA in a leading technological position, which could be incorporated with the locally built railcar program.</p>				Continued.
<p>Bellevue East Land Use Study: The Society strongly supports the continuation of the passenger line along the existing rail track to Bellevue and beyond to Stratton, Jane Brook, Herne Hill, Millendon Junction, Baskerville, The Vines, Ellenbrook, Bullsbrook Pearce airbase/ Perth's second airport etc.</p> <p>Bellevue has suffered Industrial and transport-based Planning Blight, being cut in half by the railway and must be reconstituted as an effective residential suburb.</p>				
<p>Public Transport General: It is crucial that Midland as a Regional Urban Centre should continue and improve its links with its significant hinterland, which includes Swan Valley and Ellenbrook, Averley and The Vines. The existing Midlands Railway which was built about 120 years ago, and was the original seed for the town is already in place and only needs suitable rolling stock to be commissioned for it to be in service to Bellevue, Stratton, Jane Brook, Herne Hill, Millendon Junction, Baskerville, The Vines, Averley, Ellenbrook and Bullsbrook and beyond. It will also service the future Perth airport at Pearce airbase when it is related to Gin Gin, to avoid the current airspace roster, which makes Peace, a nominal RAAF base unusable for periods every day.</p> <p>Public Transport Planning must knit into Urban Design issues, which is one of the reasons that the current Minster carries both weighty portfolios.</p>				
<p>Passenger Rail: This is an overdue development, but the above deal & concerns under 4.7.3 should take priority, because this approach is vastly cheaper, and thus mediately possible to put into commission.</p> <p>It requires only hybrid self driving railcars, using the same technology that powers Hybrid H2 bees, built by Mercedes. Some of the platforms still exist, much of the signalling is in place, as is the track. The railcars can be built here i Midland or In Bellevue, with the technology on licence from Mercedes. If Brookfield still own and control the track they will only have to co-ordinate timetables with the passenger trains, and in time we can see tow way dual tracks.</p>				

The Bellevue Residents and Ratepayers Association strongly supports the Bellevue Station as promised by Metronet.				Continued.
Retention of Woodbridge Railway Station While we are not aware of a formal proposal to close Woodbridge Rail Station following completion of the re-development of Midland Station, it has been reported to be under consideration. We seek the support of the City of Swan in ensuring that the station is retained.			Woodbridge Railway Station	Noted. The City is not aware of any plans for the Woodbridge Railway Station being removed.
Whilst this is the remit of Main Roads, it is short sighted to say that highway congestion is increasing and therefore roads should be upgraded. This is a policy area for State Government, but Perth is clearly behind the eight ball with Public Transport. Public Transport delivers more people miles per dollar, by a long way. Railways cost a fraction of the cost of Highways.			Midland.	Noted. The City is supportive of public transport and cycling options as an alternative to private vehicles.
Divert school bus traffic from Ford St and Third Ave to Woodbridge jetty parking area.			Third Av Stand 1, Woodbridge WA 6056, Australia & Ford St and Third Ave, Woodbridge	The City does not have the ability to control school bus movements, these are determined by the school. School buses are as of right vehicles and can use any local roads. Unfortunately Governor Stirling is most conveniently accessed by Third Avenue, and this is the most convenient route for buses. The parking area at the SRRP is already at capacity and so the City wouldn't recommended this area
Upgrade landscaping and frequency of maintenance in the vicinity of Woodbridge Station.			Woodbridge Station	Noted. These comments will be pasted onto the Public Transport Authority.

Movement

Train crossings

Comment	Like	Dislike	Location	Action/Response
You have not really timed the duration of these PARKED trains, my friend. Just last Sat. morn at 10.30am a train crawled in, parked by 10.35am & began moving @ 11.20am. Last carriage cleared the crossing @ 11.25am !! Many trains have a habit of parking there for 30 mins plus.. YES, it would be very annoying to get held up by an early closing gate, triggered by a slow crawling train. The beeper would make one crazy. Also, cyclists will take risks on the roads after getting held up-more dangerous			7 Rason Parade, Bellevue WA 6056, Australia	Noted. Public Transport Authority (PTA) is responsible for train crossings. These comments will be passed onto the PTA. The closure of Robinson Road must undergo a public advertising in accordance with the Land Administration Act and any comments will be considered by Council.

<p>Many youths will jump the gates, not wanting to wait for a ridiculous timespan. I would jump with my bicycle, and I'm not young.</p> <p>There's a great variation of speed-- some trains do 100ks, some go past my house at walking pace. The slow ones will make you wait a long, long time. I've seen many trains PARK THERE, completely blocking the crossing !! Some for 20 minutes duration. Will these annoying, beeping gates keep BEEPING the whole time ??</p> <p>Auto gates will cause more danger--people will rush later.</p>			7 Rason Parade, Bellevue WA 6056, Australia	Continued.
<p>The only people voting for this will be the ones not using it. Just going along with Mainstream Ideals such as public health & safety --not thinking logically. No one actually using it would want these annoying beeping gates holding them up. They cause much frustration all over suburbia, but this crossing is not even part of the Transperth network. Locals have been using it for decades with no incidents. Slow moving trains (there are many) will cause the gates to close way too early so people ..</p>			7 Rason Parade, Bellevue WA 6056, Australia	
<p>The only people voting for this will be the ones not using it. Just going along with Mainstream Ideals such as public health & safety without thinking logically. No one actually using it would want these annoying beeping gates holding them up. They cause a great deal of annoyance & stress all over suburbia, but this crossing is not even part of the Transperth network. The locals have been using it for decades with no incidents. Slow moving trains will cause the gates to close way too early.....</p>			7 Rason Parade, Bellevue WA 6056, Australia	
<p>It's very difficult to get through this intersection with the of train boom gates.</p>			380 Great Eastern Hwy, Woodbridge WA 6056, Australia	
<p>Lobby to have this existing pedestrian crossing formalised and electrical pedestrian gates installed.</p>	3	1	17 Rason Parade, Bellevue WA	
<p>Lobby for electrical pedestrian gates to be installed at this existing pedestrian crossing.</p>	5		7 Rason Parade, Bellevue WA 6056, Australia	
<p>The closure of Robinson Rd by Metronet! This is going to have an enormous impact on the traffic flow of Clayton St and the Great Eastern Hwy. Considering the high density housing approved South of Clayton St. There is already a disconnection in Bellevue with the Roe Hwy and the freight line. There will be no direct route from Clayton St to the Great Eastern Hwy within Bellevue. Can the Bellevue Residents and Ratepayers Association obtain a copy of the Traffic study to determine the impact?</p>			17 Rason Parade, Bellevue WA 6056, Australia	

Keep the crossing open! Otherwise everyone will bottleneck at Archer St or Lloyd.			12 Helena St, Midland WA 6056, Australia	Continued.
We need at least a pedestrian cross here at least. Can see people making illegal crossings all the time because of the long distances to the other crossings. People will always do what is sensible, not be forced to what is not and walking shortest route is sensible. Should change pathways to suit what people require and not the other way around			1 Harold St, Bellevue WA 6056, Australia	

Movement				
Freight Rail				
Comment	Like	Dislike	Location	Action/Response
To remedy the issues with the freight rail, the City should make a strong representation to the State Government (SG) Planning and Environment Ministers to support land purchase to enable the realignment proposed in MRS Major Amendment 1313/41 to occur. Urge the SG to construct the diversion as an urgent matter noting supporting economic benefits that will arise as a consequence. Make representation to SG for the immediate construction of an acoustic barrier to protect residents in the interim.			40A Holmesdale Rd, Woodbridge WA 6056, Australia	The City does have plans around moving the freight line however it is not currently on the City's advocacy priorities. The Freight line is controlled by the WAPC Development Control Area.
Reconnect Devon and Amherst Roads (subject to re-alignment of freight line).			Woodbridge	

Movement				
Bus				
Comment	Like	Dislike	Location	Action/Response
Buses are far apart when traveling from Herne Hill to Midland.			Midland Station, Midland WA 6056, Australia	Bus services are determined on population and the amount of passengers.. The City will pass these comments into the Public Transport Authority as they determine the services.
Better transport options for the hospital. Can't get on normal PTA buses with Gopher.	1		280 Great Eastern Hwy, Midland WA 6056, Australia	
Traffic gets very congested on these residential streets due to cars coming from the school. It seems unnecessary to have so much motor traffic coming through the suburb for school drop-offs when students could just as easily catch buses. Are the bus services for the school adequate? Could the council make recommendations to the school if they're not?			42 Frederic St, Midland WA 6056, Australia	

Movement				
Street lighting				
Comment	Like	Dislike	Location	Action/Response
Prioritise Woodbridge conservation precinct area for installation of underground power and lighting. Lighting to be similar to lighting in Railway Workshop development in Yelverton Drive.			Woodbridge	The City does not undertake underground power projects due to the high capital cost. Power infrastructure is the responsibility of Western Power (WP). WP has been trialling a program to replace power poles at the end of their useful life with underground power, and if the trial is effective, this may be rolled out City wide.
Upgrade street lighting to the standard of that in Woodbridge Lakes precinct.			Woodbridge	If residents have concerns with the lighting levels in a specific location, the City is able to undertake night inspections and report issues to Western Power.
There is not enough lighting on the streets between Midland Gate and St John of God Hospital.			3 Sayer St, Midland WA 6056, Australia	The road network is under the management of the City in the Development WA area. The City undertook a street lighting audit of Midland in 2014 and is undertaking priority order actions based on traffic safety implications. In this location the overall lighting was deemed compliant and so no works are planned. When the area is handed back to the City further investigation may be undertaken.
Need more lights on Ferguson Street.			43 Ferguson St, Middle Swan WA 6056, Australia	This street lighting upgrade is scheduled for 20/21 subject to funding in accordance with the Midland Lighting audit.
Street Lighting on Elgee Road. While I understand ongoing maintenance of street lighting belongs to Western Power. My understanding is that the council determines where street lighting should be. The lighting is currently poor and should be improved.			46 Elgee Rd, Midland WA 6056, Australia	The City undertook a street lighting audit of Midland in 2014 and is undertaking priority order actions based on traffic safety implications. In this location recommendations included the replacement of streetlights and the installation of an additional 4 streetlights. The additional street lights are included in the City's street lighting plan and will be installed on a priority basis. Lloyd St is scheduled to be upgraded and lighting will be re-assessed as part of this project. In the mean time the City will undertake a night audit and request Western Power to replace any dim street lights.

Need much better lighting here at night. Hoping this will improve along with the oval development as Juniper gardens open space extends across the crescent to the other side. Really feels unsafe with current levels of lighting.			Juniper Gardens, Lot 419 Farmers Market Ln, Midland WA 6056, Australia	There are no planned upgrades for lighting in this location. A work request has been raised to investigate and undertake an audit.
Street lighting should be a given and responsibility of Cos to assess as matter of course, not included in a public survey.			1 Edward St, Bellevue WA 6056, Australia	Noted. The City does undertake its own street lighting checks as well as investigating locations when resident requests come in at ad hoc.
Clayton Street is now another main arterial road into Midland. Street lighting needs to be improved from Military Road to Roe Highway.	1		1 Edward St, Bellevue WA 6056, Australia	This land is owned and maintained by DevelopmentWA. When the land is handed back to the City we can investigate. This area was considered in the Bellevue Streetlighting audit conducted in 2015. Recommendations included replacing 4 existing luminaires and the installation of 4 additional lights. The additional street lights and upgrades are included in the City's street lighting plan and timing is based on priorities.
Street Lighting on Morrison Road between Spring Park Road and Lloyd Street The lighting along this section of road is the responsibility of the City of Swan needs to be improved. Existing lighting needs to be upgraded not just removed and covered with green domes. You have sections where there is no lighting now and dark spots along Morrison Road.	1		110 Morrison Rd, Midland WA 6056, Australia	Morrison Road lighting between Lloyd Street and Spring Park Road was upgraded in 2019/20 and completed in 2020/21.
Street Lighting on Lloyd Street between Toodyay Road and Morrison Road While I understand ongoing maintenance of street lighting belongs to Western Power. My understanding is that the council determines where street lighting should be. Considering Lloyd Street is now promoted as Midland's main arterial road from the north. The lighting is currently poor and should be improved.	6		Lloyd St After Spring Av, Middle Swan WA 6056, Australia	At the time the streetlighting audit was conducted in 2014 there were no streetlights in this location however there now appears to be several in place. A work request has been raised to investigate and undertake an audit.
Street lights need improvement. It's quite dark at night.			16 Harold St, Bellevue WA 6056, Australia	This area was considered in the Bellevue streetlighting audit in 2015. Recommendations included the replacement of 5 existing luminaires. The additional street lights and upgrades are included in the City's street lighting plan and timing is based on priorities.

Other Comments				
Other				
Comment	Like	Dislike	Location	Action/Response
I don't like living in midland			31a North St, Midland WA 6056, Australia	Noted.

Appendix B: Schedule of Submissions and Responses from the Second Consultation

The following comments were submitted via the survey and one letter to the City. This is the comments and response from the City:

Crime	
Comment	Response
#1 reduce the “perception” of crime? Crime should be reduced not just the perception! Who is responsible for the wording?	<p>Noted. In the first round of consultation, crime and antisocial behaviour came through as one of the major concerns of the community. In this round of consultation, the community voted for this to be the number 1 priority. The City has a close working relationship with the Midland Police and bordering Local Governments to jointly address crime. The City will be reviewing the Community Safety Plan, which determines the City’s direction for community safety and looks at the City’s role as a service provider, in partnerships and as an advocate for the community. The review of the Community Safety Plan will investigate strategies that the City can implement to make the community feel safer.</p> <p>Based on the feedback received, the wording of this priority has been amended to: “Improve community safety and antisocial behaviour in the Midland town centre”</p>
I think the wording for ‘perception’ of crime needs to be revisited. Surely we want actual less crime not just perceiving less crime?	
Give guidelines to residents who want to report antisocial behaviour that will facilitate support. How do we help people in distress and needing assistance from police or health services?	
Streetscapes and safety are the most important items for midland	
It’s just all about the safety. I never feel safe attending shopping places in midland. Especially the iga where so many homeless people live and beg.	
Make Midland a safer place to be at night. Would be awesome if there was some sort of nightlife or nice pub in the new section near Bunnings	
Crime is the biggest issue. Midland is a hole.	
Something to be done about the kids on dirt bikes who drive around the streets and oval at risk to others (middle swan oval Patterson drive)	
Do something about people doing burnouts on the streets.	
Work to eliminate Midlands’s defacto status as a bogan town and haven.	
I don’t feel safe in Midland at night. Street patrols? Manage crime. Decrease litter.	
Improve other city services such a ranger availability. Improve drainage during bad weather to prevent roads from flooding / dangerous driving situations.	<p>Noted. Community Safety Advocates (Rangers) work in teams across the City to assist customers with a diverse range of issues. The Community Safety Advocates are customer service oriented. They use their mediation and negotiation skills to assist with issues relating to dogs, cats, stock, abandoned vehicles, fire hazards, development compliance, broad local law enforcement and other general requests for service.</p> <p>The Community Safety Advocate team members are available seven days per week from 7am – 7pm and can be contacted by calling 9267 9267.</p>

Aboriginal Heritage	
Comment	Response
<p>9. Reduce the perception of crime and antisocial behaviour in the Midland town centre.</p> <p>A lot of the perceived problems are due to the high aboriginal population, see 7 (community services). These people need recognition, good and bad, a purpose in society, with responsibility. Greater effort on all sides should be made to accept each other. More distributed (not pockets) social housing and employment opportunities would help and perhaps some alliance/co-ordination of the multiple social assistance and health charities in Midland.</p>	<p>Noted. Protecting and Promoting Midland's Aboriginal and European Heritage has been included as one of the top 10 priorities for the Midland Local Area. The City of Swan acknowledges the Wadjuk-Noongar people as the traditional custodians of the land and their connection to land and community. The City recognises the significance of their cultural heritage, beliefs and relationship with the land. The City has created a draft Reconciliation Action Plan (RAP). The RAP will formalise a commitment between the City and the Wadjuk-Noongar and other Indigenous peoples living and working in Swan. Developing the RAP enables the City to develop greater cultural awareness and professional development practices that will strengthen relationships with Aboriginal and Torres Strait Islander stakeholders, and ensure more effective and relevant service delivery to Aboriginal and Torres Strait Islander peoples and communities.</p>
<p>Making Aboriginal culture more visible, recognising Aboriginal heritage and local Aboriginal people. Perhaps an Aboriginal cultural/arts/ activity centre. Recognition of Nyoongar language in place names.</p>	
<p>Connection to country. Way to celebrate traditional owners of swan land.</p>	
<p>Promote and make freely available cultural awareness training in public libraries etc. Hold regular events celebrating cultural diversity within the community. Increase the visibility of cultural inclusion through the addition of Aboriginal people in the City's promotional material/advertising - in the City's own website there are many photos of persons from different ethnic backgrounds. However it's very difficult to find any photos of our First Nation Peoples. The City's 2021 calendar was devoid of any cultural inclusion.</p>	
<p>2 Need to link river to town with indigenous resource centre incorporating cultural centre Aboriginal health centre and training centre plus some aboriginal family housing</p>	

Homelessness and Community Services	
Comment	Response
<p>More support for homeless and very needy people.</p>	<p>As part of the first stage of consultation for the Midland Local Area Plan the City undertook extensive consultation and met with groups of all socio-demographics. The community were concerned for homeless people and is covered under the priority "Ensure there are adequate community services".</p> <p>In May 2019, prior to the COVID pandemic, the City of Swan partnered with Indigo Junction and RUAH for Connections Week to survey people who are experiencing homelessness in Midland. This survey identified that 149 people are experiencing homelessness in Midland including 52 children. It was identified that families make up 27% of Midland's homeless compared to just 2% in Perth and 7% in Fremantle. Of the families identified in Midland, 92% are Aboriginal and/or Torres Strait Islander. At the November 2020 Council meeting, the Council resolved to approve the CEO to draft a joint funding submission with Indigo Junction to the State Government for outreach program.</p>
<p>Ask others what they want in the plan, what is above is the focus of a person with money. How about those low income and /or homeless.</p>	
<p>Homeless shelters for the homeless</p>	
<p>7. Ensure there are adequate community services.</p> <p>We are not well informed in this area. There appears to be a multitude of community services in Midland, many of them not for profit, there may be benefits in co-ordinating some of these and groups forming alliances. There are obvious shortcomings with homeless, particularly families, drug and alcohol issues and employment shortages still apparent.</p>	

Streetscape and place Improvements	
Comment	Response
Footpaths and street lights. Vehicle speed limitations i.e. speed humps	<p>Noted. Facilitating Streetscape Improvements is one of the top 10 Midland LAP priorities. Streetscape improvements can include maintenance, tree planting and lighting.</p> <p>The New Junction redevelopment will be a mixed used area with several open spaces which are pedestrian orientated with connections to the new Midland Train Station. This will create jobs in construction as well as long term jobs with commercial spaces.</p> <p>The Bellevue Tree Planting Project was progressed by the City and involved planting street trees on the verges adjacent to those properties where owners indicated via a survey that they will maintain trees after they have been planted. A total of 133 trees have been planted. Following on from the 12 May 2021 Ordinary Council Meeting decision on the BELUS Report, the City met with representatives from the Bellevue Residents and Ratepayers Association on the 23 June 2021 to discuss the submitted list of items and to enable an agreement to be reached on the objectives of those actions and how it would be dealt with in the future.</p> <p>The feedback received in the first round community consultation included requests for entry statements in the Midland Local Area. Many of the suggested locations were on Main Roads land, or land that will be affect by major scheduled infrastructure. There are future infrastructure upgrades planning for portions of the Main Roads controlled land and so to ensure that any new work is not affected or removed by future infrastructure upgrade the City will postpone any decisions on this.</p>
More controlled crosswalks are needed	
Midland needs to be a people oriented space. There is a need to create VALUE ADDING employment especially for the youth. Traffic issues need to be sorted out.	
Make entrance to Midland via Eastern Highway is made more attractive to visitors at present it is an eyesore, with shops boarded up and drawn paintwork.	
Make it more pedestrian friendly environment and less car oriented.	
Incentivise sustainable living and development outcomes	
Beautify & tidy up some areas like Bellevue and make it more liveable.	
<p>3. Facilitate street scape improvements.</p> <p>The City of Swan should be applauded for its plans for streetscape improvement and tree planting but it should try and influence others, in particular Main Roads Department and developers to show greater respect for streetscapes. Suggest consulting with Malcom French, President of the Board for Trillion Trees, who has a lot of suggestions for native street scape trees and the tourist potential.</p> <p>To state that “it is not a priority for the City” to be involved in “major scheduled infrastructure” is negligent and irresponsible. The rumoured, or is it true, Morrison Road/railway flyover landing in</p> <p>Woodbridge Primary School grounds should be nipped in the bud, we don't want to mirror the eastern entrance to Midland of freeways and concrete barriers. Main Roads have recently shown their ignorance of community views in the suggestion to make Guildford two lanes each way again, fortunately a plan now dropped. They cannot be trusted because they don't have the skills beyond road making.</p>	
More School crossing Guards in Stratton. Near the shops on Cockman cross	The City does not have authority over school crossing guards. This needs to be raised with Middle Swan Primary School.
Retain/strengthen a sense of community.	Noted. The Local Area Planning Process aims to retain the sense of place by working on a 'local area' basis. This ensures the priorities we are creating reflect what is important to the community.
Rezone Midland boundary from Fredrick street to Great Northern Highway as it is a natural boundary	Noted. The City is not currently reviewing the suburb boundaries.

Continued...	Continued...
<p>6. Create a vibrant place through place activation, community events and community consultation. Sadly the markets are yet to recover from the long period of indecision by the CoS and a somewhat lacklustre performance by Rotary at the new venue. There is so much competition now, Inglewood, Bayswater, Kalamunda etc, Midland should emphasise their connection with the Swan Valley, get more stalls and do more marketing.</p> <p>City of Swan should lead rather than hide behind 'privately owned' excuses. Surely local planning laws can limit signage along Great Eastern Highway, what about more trees along this road.</p> <p>Where is the Midland Town Centre the document refers to? Town Hall area, New Junction, Midland Gate or possibly the Workshops. With the changing demographics in Midland there are opportunities for community events, the Library and Arts Centre put on good talks and events but there is little publicity given to them, Bassendean has the footy oval but what does Midland have?</p> <p>Make Midland more attractive, tree lined avenues, flowers see #5 (Facilitate the retention of trees, bushland and improve Midland's connection to the Swan and Helena River).</p> <p>The Midlandia/Fringe Festival are poorly attended, improved marketing could help here. Concerts in the Workshops or outdoors could prove popular. Yes we need more community events and in particular more publicity of them.</p>	<p>Noted. The City's Stakeholder Engagement Officers, Community Development officers and Youth Officers work with the community to activate the Midland local area and promote events where possible. The City is currently working on a Midland marketing strategy to attract businesses and events to the area to activate spaces.</p>

Youth	
Comment	Response
I like the idea of spaces that cater for the community but I would like to see specific areas for our youth.	Noted. This is covered under the priority "Ensure there are adequate community services".
Nothing for little kids to do. Fun station, bowling alley, something fun for the kids please. More free family events	The City creates recreation spaces which are accessible for children and people with disability.
Midland should consider community allotments and many more community based things for young adults	There are several facilities for young people in the Midland Local Area such as;
<p>What about ensuring access for children and people with disability.</p> <p>More value add to the services and programs that PCYC can offer to the local community particularly with the large infrastructure upgrade commencing in this financial year, the organisation is able to now expand its reach with an increased scope of recreational and diversionary programs to whole community</p>	<ul style="list-style-type: none"> - City has completed a skate park at Lot 300 Grey Street in Midvale. - Weeip Park has activities such as a playground and rock climbing wall. - Midland Youth Hub. <p>The City also supports local community group events held in the Midland Local Area.</p> <p>Noted. Midland Police and Community Youth Centre (PCYC) operates a range of activities for young people, and the community. This is done in partnership with schools, the City of Swan and other youth/community agencies.</p>

Roads	
Comment	Response
Open all roads and make 2 way to improve access and flow. I.e. Old Great Northern Highway, Helena St. Do not use the word Old, as it implies less worthy.	Noted. Old Great Northern and Helena Street are both two way access.
Plant more trees along roads and on public open spaces (Great Eastern Highway & Morrison Road in particular). Keep Helena Street level crossing in place. Keep Robinson Road open. Take a more active role in opposing state government closures of roads, altering major intersections etc. that impact the local community. Slow traffic down on Great Eastern Highway - two-way traffic on GEH and Victoria Street plus a 40km/h limit between William Street and Lloyd Street between 8.00am and 5.30pm will make it so much easier to stop and shop. Promote creative hubs including the Artsource studios. Promote Midland as the 'Capital' of the Swan Valley.	Noted. Robinson Road is currently managed by DevelopmentWA and Main Roads. The City received an application to close Robinson Road from the Public Transport Authority (PTA) in September 2020. The City has not processed the application, pending the completion of traffic modelling being undertaken by the PTA to demonstrate the impacts of the closure.
Keep Robinson Road open,	
Please don't change Robinson Road	
Look at ridiculous traffic build up on Clayton Street. Just crazy.	Noted. The City is aware of the likely continued growth of traffic on Clayton Street and Bellevue area. The City is investigating potential future treatments.
4. Improve traffic safety and congestion. Parking. Has the parking policy really been a success? It has accelerated the demise of Old Great Northern Highway and the Avenue near what should be the centre of activity, the Town Hall, and we are sure elsewhere as well. Is there a cost benefit?	Noted. The City continues to work with local businesses to support them where possible. The City has received feedback from local businesses who support the parking restrictions as it assists in helping turn over and stopping workers in the area parking all day in front of their businesses.
Orange Route We were not aware of the Orange Route proposal and it obviously requires close scrutiny before making a commitment. Initial thoughts concern loss of business for Mundaring etc, costs in dollars and damage of a new and expanded existing roads, (Main Roads seem hellbent on destruction of old trees on other projects), traffic increase through Gidgegannup etc. Is there any analysis available in the public domain?	Noted. The Orange Route is the proposed Perth to Adelaide Highway and part of the EastLink WA project managed by Main Roads. The project is currently in the planning and development phase. This phase is scheduled to be completed in the next three years, from August 2021, investigation in proximity to the proposed route will comment.
Lloyd St Extension We gather CoS is getting Main Roads to design the Helena River bridge. It is imperative that environmental damage to the floodplain is minimised, as many trees retained as possible and more trees are planted. The bridge should have minimal embankments in the flood plain and multiple spans on piers with pile foundations to minimise disruption.	Noted. The extension of Lloyd Street will create a southern entry to Midland, providing improved access to St John of God Hospital and Curtin University Campus. It would also directly link Midland with the industrial areas of Hazelmere, Forrestfield, Kewdale and Perth Airport; helping reduce congestion and boost local employment opportunities. The project is currently in the 'planning phase' and final drawings have not been released. The City is also working with the Western Australian Planning Commission to consider where trees can be planted to offset the trees lots as part of the Lloyd Street Bridge.

<p>The suggested Workshop Road? in the Helena River floodplain from Lloyd Street should clearly be rejected, it goes nowhere, will destroy flora, fauna habitat and floodplain with no justifiable benefit.</p>	<p>Noted. This project is within the DevelopmentWA managed land. The Lloyd Street Bridge is being funded by the Federal and State Government and being managed by Main Roads.</p>
<p>Morrison Road widening.</p> <p>A pointless costly exercise that we hope Council will reject. We don't want busy wide roads through Midland.</p>	<p>Noted. The Midland Activity Centre Structure Plan, which was approved by the Western Australian Planning Commission on 30 January 2018, outlines the requirement of a Local Development Plan (LDP) for the Morrison Road West Precinct which includes the need for road widening. Council deferred the decision at the 23 September 2020 Ordinary Council Meeting on the Morrison Road Local Development Plan until heritage assessments are completed on several properties within the Local Development Plan. The heritage assessments have been undertaken and will be advertised to the community subject to Council endorsement to advertise at the 28 July OCM.</p>
<p>Roe Highway/Morrison Road interchange.</p> <p>Potentially very expensive to address short rush hour period congestion and driver negligence safety issues. Will the Ellendale rail line reduce traffic at all? Are traffic lights co-ordinated with those at Toodyay Road/Roe Highway?</p>	<p>Noted. The City has been investigating options for the Workshops Avenue Road however the final design has not been confirmed and endorsed by Council.</p>
<p>Clayton Street</p> <p>Whoever designed the road system from Lloyd Street to Roe Highway should be sacked for gross incompetence. If the design was by a consultant compensation should be sought. This is not the way to design roads for a new commercial development.</p>	<p>Noted. As part of the Main Roads WA program to improve intersection safety and reduce congestion, the City has included several traffic interchanges on its 2020 Advocacy Priorities including Roe Highway and Morrison Road to Improved efficiencies for trucks and heavy haulage frequently using the Highway as a gateway to the North. The traffic network will be improved with other wider traffic improvements such as the Lloyd Street bridge and intersection upgrades at Roe and Great Eastern Highway Bypass and Abernethy Road and Great Eastern Highway Bypass.</p>
<p>Toodyay Lloyd intersection</p> <p>Suggest cameras and greater law enforcement of amber gamblers would be the most economical solution. It is not the road's fault but the drivers.</p>	<p>Noted.</p>
<p>Congestion.</p> <p>An extremely high proportion of cars have single occupants, use of public transport, car sharing etc. should be encouraged. Financial penalties, bus lanes etc could cut down on this traffic, State and Federal support is required here.</p>	<p>The City is supportive of public transport, cycling and other alternative modes of transport to the private vehicle. The relocation of the Midland Train Station will create more opportunities in this space.</p>
<p>1. Put speed humps in shopping centre carparks as a requirement for child safety</p>	<p>Noted. These car park are privately owned by the shopping centres.</p>

Park and Trees	
Comment	Response
Creation of a central park, that is close enough for people to walk to.	<p>Noted. "Ensure Midland has public open space that caters for the community" has been ranked as the second most important priority for the Midland Local Area community. The City has recently completed Weeip Park which is located in New Junction and is accessible by the community.</p> <p>At the June Council resolved to conduct a Program review of the New Junction Implementation Program with the outcomes thereof to inform "an alternative strategy to resolve the funding shortfall through other means such as borrowings, public private partnerships, joint ventures or grants" as required to be reported on by Council in its Resolution 3) of 12 May 2021.</p>
Restore Midland oval to a large, well maintained public green space	
Let Midland Oval development go ahead	
Why are the city of swan spending so much money on the midland oval project? It is a debt that the city can't afford. It's disgraceful and to be honest it looks shady and underhand how it has come about Why are the city of swan spending so much money on the midland oval project? It is a debt that the city can't afford. It's disgraceful and to be honest it looks shady and underhand how it has come about	
2. Ensure Midland has public open space that caters for the community. Whilst the works on the Midland Oval may "cater for the community" it is at the expense of loss of public open space to so called "development". Parks and open space are recognised as making areas more liveable and reducing social problems and they should be kept open and more added.	
Plant more trees	<p>Noted. This is covered under two of the Midland Local Area Priorities "Facilitate the retention of trees, bushland and improve Midland's connection to the Swan and Helena River" and "Facilitate streetscape improvements". The City has a tree planting program where verge trees will be planted at the request of the adjacent resident if they commit to watering initially to establish the tree. This has resulted in 800 trees being planted. The City has also prepared the draft Urban Forest Strategy in response to a loss of trees across the City. Midland has been identified as a priority and the City is currently exploring options to increase the canopy cover. The City has undertaken a coordinated street tree planting program in Bellevue with 133 trees being planted. This is in accordance with the Bellevue Landscaping Masterplan which was an action of the Bellevue East Land Use Study.</p>
<p>5. Facilitate the retention of trees, bushland and improve Midland's connection to the Swan and Helena River.</p> <p>We need more than retention and protection of existing trees, we need more trees planted and the proposed Urban Forest Plan does not go far enough in this regard. It is imperative that existing urban forest on public and private property is retained and expanded. The Helena River should be made a National Park and an extension of the Bibulum Track with a walkway along its banks. A walk from Guildford to Albany. Malcom French, President of the Board for Trillion Trees, is a great advocate of Eucalypts and considers WA and Perth to be wildflower capital of the World. Surely this is something the City of Swan should build on with avenues of trees, wildflower gardens, easy access from Perth city by train. He is certainly worth talking to and his enthusiasm is infectious.</p>	<p>Noted. The City agrees that there is opportunity to plant more trees as well as retaining the existing canopy. The draft Urban Forest Plan includes Action such as "Develop implementation plans focusing on tree canopy planting priorities and recommended tree species throughout each Local Area, preferably utilising a whole of street approach." To increase the amount of trees in each local area.</p>

Trolley Collection and Shopping Centres	
Comment	Response
<p>Fine shopping centres for the trolleys left all over the streets, it is the worst suburb I have ever lived in and an embarrassment for the shire</p> <p>Clean up the shopping trolley problem as it creates a poor impression for people driving through midland.</p>	<p>A shopping trolley collection trial was undertaken between February 2020 and December 2020 as per the Council resolution from February 2020. The results were presented to Council at the March 2021 Ordinary Council Meeting. Council resolved to continue collecting trolleys City wide for the remainder of the 2020/21 financial year and the 2021/22 financial year and to Instruct the CEO to prepare a report to a future meeting of Council to strike a fee for collection and storage, with a view to having these entered into the Consolidated Local Law 2005 in the following financial year.</p>

Health Services	
Comment	Response
<p>I think there should be more mental health services for young people</p> <p>6 pm to 6 am ED clinic for drug and alcohol cases to provide quicker help for genuine cases and alleviate hospital ramping</p>	<p>The Swan City Youth Service (SCYS) in Midland is a Not-for-Profit (NFP) organisation supported by the City and other tiers of government that operates as a one-stop-shop for young people aged 12 to 25 years. The SCYS offers a range of educational, recreational, life skills, and art and music programs. A variety of services offered include drug and alcohol counselling, mental health support, weekly medical clinics, assistance with finding accommodation and accessing Centrelink or any other services required. Midland Library run programs and initiatives for young people throughout the year and particularly during school holidays. SCYS, RISE youth, PCYC, Our Place LGBTIQ+ Drop-in are available within a 2km radius of Middle Swan.</p>

Jobs and Tourism	
Comment	Response
<p>Improve opportunities for jobs and apprenticeships</p>	<p>Noted. The City is not responsible for the provision of tertiary education. We can only advocate for these facilities when the population trends suggest a need.</p> <p>The City of Swan does work with private companies and government agencies to assist in attracting businesses to the Midland Local Area. Projects like New Junction and the relocation of the Midland Train Station will create investment in the area.</p>
<p>Turn the midland railway workshops into a heritage precinct with likeminded groups to create Perth's biggest heritage area as a tourist drawcard to promote the city and local business. The structure is there already.</p>	<p>The workshops are located within the Development WA area. The City's Tourism and Development Strategy recommends that as the redevelopment of the workshops progress the City should investigate tourism related opportunities. There is a current EOI in the market for these spaces, however Council is yet to be handed these assets so therefore the premises is not currently within Council control.</p>
<p>Food outlets</p>	<p>Noted. There are many food outlets in Midland.</p>
<p>Ensure there are plenty of facilities for people to go to including quality cafes, restaurants, music venues and other entertainment.</p>	<p>Noted. There are restaurants and other entertainment options in Midland. Furthermore, the City is investing in New Junction which will be a mixed use precinct to create more night time activities for the Midland town centre.</p>

Waste and Sustainability	
Comment	Response
Provide green compost/garden waste bins and collection to residents, and provide more verge side collections per year to help residents maintain their property better to improve the street view and join leading suburbs in reducing household general waste.	The City is aiming to implement FOGO (food organics garden organics) bin system by 2023.
Ensure Swan is zero by 2030 with free EV charging from equipping all Shire land and buildings with solar. All swan vehicles EVs or hydrogen Congratulations on declaring climate emergency but now you have to make it happen.	Noted. The City has an EV charging station in the staff parking and there are several City cars use this service. The City is investigating how to reduce emissions and there will be a resolution on this in the next financial year.

Support for the Proposed Priorities	
Comment	Response
It all looks amazing great planning and inclusive of everyone well done	Noted.
No, they are all important and hard to prioritise. Midland is definitely on the way up!	
No, I think the priorities highlighted above are what midland needs. Also providing more community services	

Swan Active Midland	
Comment	Response
Improve the sporting recreation centres. Swan Park area basketball, swimming, netball these areas and facilities are well used by and need to be updated or major maintenance done to them. A complete new renovation of the area as had been done in other shire areas. E.g. Ellenbrook	Swan Active Midland will be going through a \$16 million renovation. The works are starting in the second half of 2021. The works will include upgrades to the gym, group fitness room, crèche, indoor pools, sports courts, changing rooms, and main entry and front facade. Refurbishment of the outside pool area and sauna are included in future planning.

Parking	
Comment	Response
Not enough parking along the streets in the centre of the Midland town. Sometimes searching for a bay for half an hour. Annoying when you are sick and need do blood tests.	The Midland Access and Parking Strategy was adopted by Council in 2013 following approximately four years of investigation and consultation. The Strategy is a broad document that sets parameters and actions to improve access, regulate parking, and move to a more sustainable situation. The primary objective of the Strategy is a focus on customer parking in the Midland area to support the local business economy. Generally, on street parking is provided with restrictions i.e. time limited to encourage turnover and discourage longer term parking. On street parking in close proximity to businesses should be prioritised for customer parking.

Train Station	
Comment	Response
1. The old train station needs to go asap. 2. The new train line and Bellevue station should be built opposite the Bellevue RSL. 3. The cycle path should then be extended along the new train line from the current end in West Midland all the way to the Bellevue RSL and Heritage Trail	Noted. The relocation of the Midland train station is managed by Metronet. As part of this project Metronet will be looking at pedestrian and cycle links from the train station, however nothing has been confirmed at this stage. The Midland Train Station is currently in the 'project definition phase' and expected to be completed in 2023.

Animals	
Comment	Response
Pet friendly places. We regularly travel places like Fremantle to find pet friendly shops and eateries and areas. It's important nowadays	The only park in the Midland Local Area where dogs are not permitted is John George Walk Trail in Viveash.
Improve facilities for dog owners. Dedicated dog ovals that are enclosed	
Enforce responsible cat ownership by fining those who continue to allow their cats to roam, especially unsterilized.	The City of Swan is unique to other local governments as we have local laws that prohibit cats from entering private property without the property owner/occupier's consent. It is up to cat owners to ensure their cats do not enter private property - this can be done by keeping cats inside or within an outdoor cat run.
Protect the local wildlife in Bushmead	Bushmead is located in the Guildford Hazelmere Local Area Plan. As part of the Cedar Woods Estate in Bushmead, the developer has retained 185 hectares of natural bushland which is contiguous via its connected "green link" of the Kadina Brook, which provides a habitat for species common to the area, such as the Southern Brown Bandicoot (Quenda), the Western Grey Kangaroo, Carnabys and Forest Red-tailed Black Cockatoo. Specially designed fencing surrounding Bushmead includes apertures that allow kangaroos and joeys movement throughout the bushland and into adjoining national parks. Fencing is also required to protect areas which have recently been revegetated. This fencing helps to protect seedlings from wildlife, giving plants the best chance to grow and thrive. Sections of the bush will remain fenced until the plants have grown sturdy, which may take a number of years. Cedar Woods has been working closely with the Department of Biodiversity, Conservation and Attractions in developing a Conservation Management Plan and Revegetation Plan and will continue to do so to ensure the protection of all local wildlife and flora during the creation of the Bushmead community.
Make sure people do not refuse guide dogs, hearing dogs and service dogs	Noted.

Heritage	
Comment	Response
<p>1. Promote and Protect Midland's heritage.</p> <p>Words are not enough. We need proper implementation of protective measures. We have lost the oval, saleyards, rodeo, military markets to concrete and car parks for businesses relocated from other parts of Midland that now remain vacant and run down, with little benefit to the community. Whilst some good work has been done with the railway workshops there is also a lot of token acknowledgement to the heritage in street names and little else.</p>	<p>Noted, the protection of heritage assets is identified a priority under the City's 20/21 Corporate Business Plan. The City will be reviewing its Local Heritage Survey in 2022 and inviting the community to nominate properties for the City to consider for inclusion. A full review of the Local Heritage Survey is scheduled to be undertake in 21/22. The City received several heritage nominations in 2020, with the majority of the properties being in Midland. The City engaged with a heritage consultation to undertake heritage assessments and create place record form. Council resolved to advertise the majority of the place record forms at the 9 June 2021 Ordinary Council meeting and the rest will be considered at the 28 July 2021 Ordinary Council Meeting.</p>
<p>Keep the historic houses situated behind the Honda Shop, Midland.</p>	<p>Noted. 43 and 45 Sawyer Street are behind the Honda Shop and are part of a heritage nomination by a community member in 2020. The City engaged a heritage consultant to undertake a draft assessment and at the 9 June 2021 Ordinary Council Meeting Council resolved to advertise the draft place record forms.</p>

Industrial Interface	
Comment	Response
<p>8. Review the interface between residential and other zones. Not just Bellevue. Hazelmere development shows little consideration of interface between what was rural and now industrial zone and residential, with portions (BGC) built illegally (not on scheme sewerage) or through loopholes in Federal legislation. Residents and community must be given more consideration over the short-term gains of developers.</p>	<p>Noted. The Hazelmere interface is considered as part of the Guildford Hazelmere Local Area Plan.</p>

Cyckling	
Comment	Response
<p>10. Facilitate cycle and public transport options.</p> <p>The cycle path from Perth stops at Morrison Road, before it gets to Midland, this must be extended and not in shared path format.</p> <p>Shared path labelling should be changed such that pedestrians are facing oncoming cyclists rather than having them approach from behind, often without a bell warning.</p> <p>The relocation of the railway station is hard to understand, such a short distance at high cost. Will the bus station move too? Yet again the question of where "the heart of Midland Town Centre" is? Is Centrepoin doomed like the Old Great Northern Highway shops?</p>	<p>Noted. The City's Cycle Network Plan propose the Viveash - Woodbridge - Midland Cycling Link Improvement: The proposed cycling link from the John George Trail along the Swan River foreshore in Viveash to Woodbridge Station and the Midland Rail Principle Shared Path. Proposed improvement includes constructing a new shared path along First Avenue and providing a crossing facility at the intersection of Great Eastern Highway and First Avenue.</p> <p>The final design of the relocated Midland Train Station is yet to be confirmed, however it will include a new 12 stand bus interchange.</p> <p>In general, the Midland Town Centre is the area of Midland included in the Midland Activity Centre Structure Plan Centre and DevelopmentWA area.</p>

General Comments	
Comment	Response
<p>11. Summary.</p> <p>Midland has character and characters; these should be exploited not destroyed.</p> <p>The City of Swan has many challenges ahead to make the best of Midland Local Area. It should show stronger leadership than it has in the past and not limit itself to areas within its jurisdiction but lobby both private and public sectors to improve the area. Community consultation and encouragement is critical; not just consultation but also taking community opinions on board and implementing them.</p> <p>The Midland area played a major part in the development of WA and can continue to do so, until the urban sprawl takes over it is at the interface with rural WA and in the main corridor to the Eastern</p> <p>States. The history, flora and fauna, aboriginal culture and location as the entrance to the Perth region should be developed and exploited to make Midland a better place and not just a mirror image of shopping centres and housing estates elsewhere.</p>	<p>Noted. The Midland Local Area Plan is a high level document which shows the top 10 priorities of the community. The themes of European Heritage, Aboriginal Heritage, community consultation, came through in the first stage of consultation and have been reflected in the top 10 priorities.</p>