

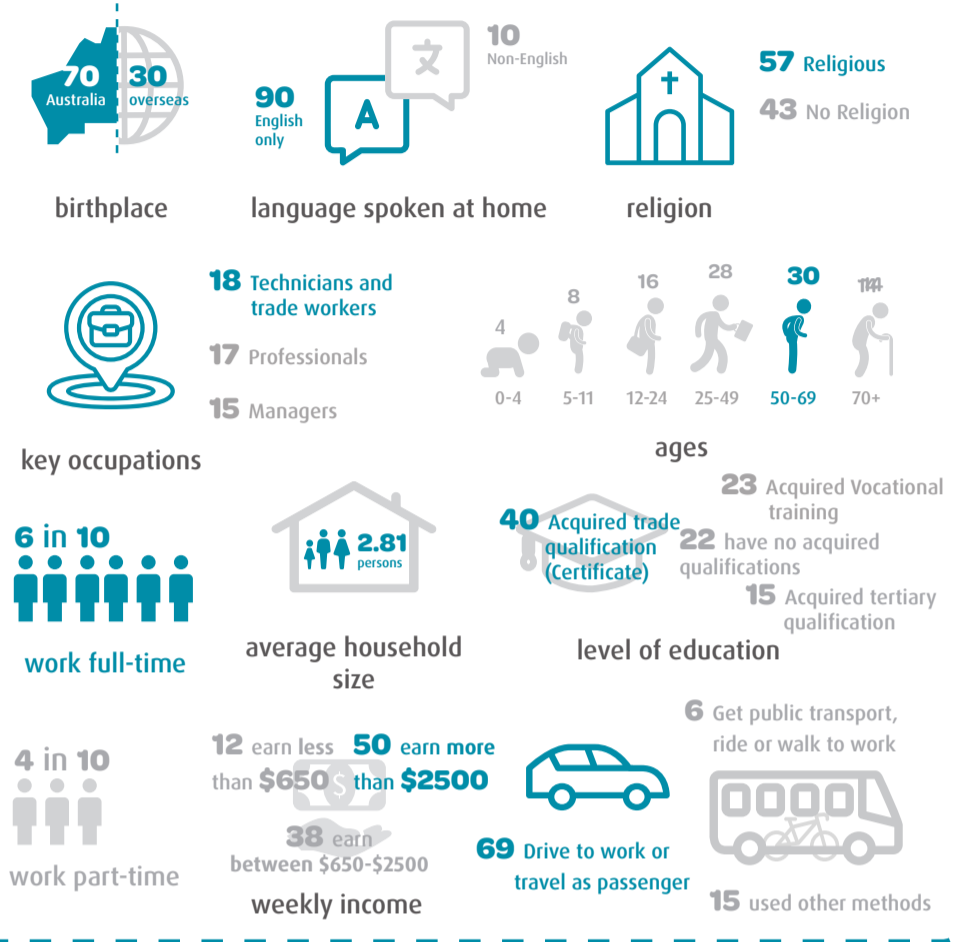
Upper Swan Local Area Plan

2022 Updates

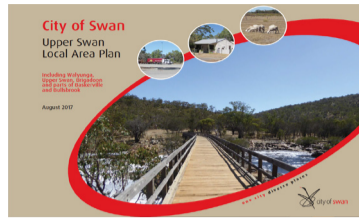
Community Snapshot

If Upper Swan was a village of 100 people, what would it look like?

There are just over 1,700 people living in Upper Swan. Represented by 100 people, this is what Upper Swan looks like.



Upper Swan Local Area Plan Priorities



In 2016, community engagement was undertaken to allow the Upper Swan community the opportunity to identify issues through a consultative process, and for the City to develop priorities for each area.



80 people attended the workshop



32 survey responses

Adopted in August 2017, the Upper Swan Local Area Plan outlines the community's priorities, determined by the feedback received throughout the engagement period.



Mitigate Impact of New Urban Areas



Protection and Management of Natural Assets



Improve Road Safety



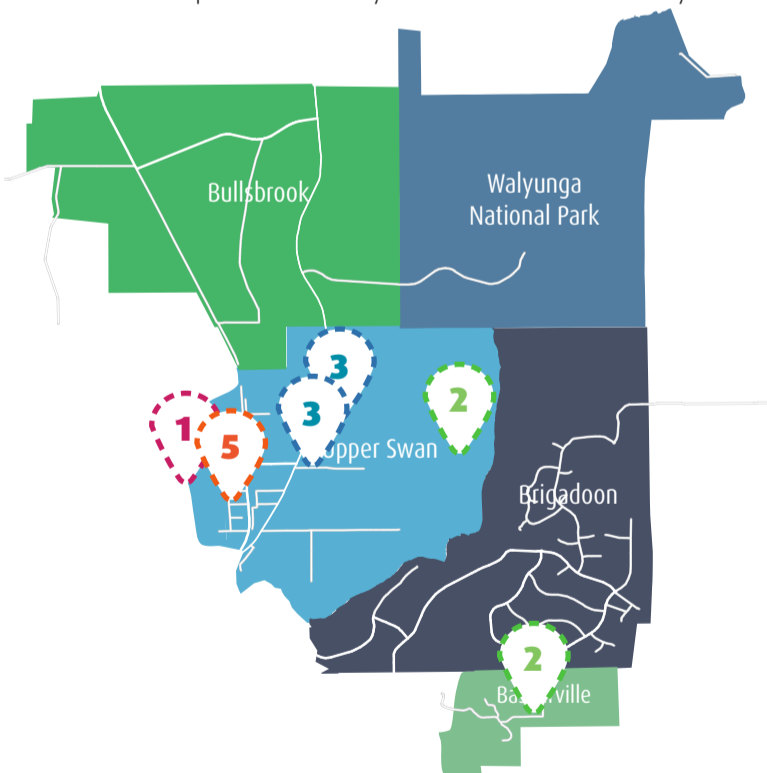
Protect Existing Agriculture



Support Compatible Land Uses

Upper Swan Local Area Plan 2022/23 Updates

The following map indicates what is being done in the area in support of the priorities in the LAP's second year of operation. These updates will be published on the City's website and updated annually to inform the community.



PRIORITY 1 UPDATES



Satterly's Clementine Estate provisions and infrastructure will service the wider Upper Swan community. The Structure Plan Area includes 1646 residential lots, 2 hectares of Commercial and 13 hectares of POS, as well as a primary school site. The revised Local Development Plan was approved by Council in July 2022.

The City is working with the developers to mitigate where possible construction impacts in the short term on the existing community.

PRIORITY 3 UPDATES



Main Roads is constructing a new roundabout at Great Northern Highway, that will accommodate the increased traffic flows. Expected to be completed September 2022.

Railway Parade was widened in January 2022 between Warbrook Road and Maralla Road as part of the City's Black Spot program, which aims to improve traffic safety.

PRIORITY 4 UPDATES



The current review of the Local Planning Scheme will look to support priority agriculture areas in the City and the permitted uses, affecting the Upper Swan local area.

PRIORITY 2 UPDATES



The City held a number of Thinking Green workshops in 2021 including two held at Baskerville Memorial Hall in July.

[READ MORE HERE](#)

The City is working with DBCA and Traditional Custodians to undertake a master planning process for Bells Rapids to protect and restore the ecological and cultural values of the site.

[READ MORE HERE](#)

In 2023, the City will move from a two bin system to a three bin FOGO system to help keep waste out of landfill.

[READ MORE HERE](#)

Scheme Amendment No.132 was endorsed by Council in August 2021 which allows for further protection of reserves and function of land-uses for the Western Swan Tortoise, and creates no adverse impacts to lands.

PRIORITY 5 UPDATES



Satterly's Clementine Estate services and infrastructure will service the wider Upper Swan community. The Structure Plan Area includes 1646 residential lots, 2 hectares of Commercial and 13 hectares of POS, as well as a primary school site.

The City is undertaking a review of the current and previous extractive industry locations throughout the area.