

Swan View Local Area Plan

Swan View Local Area includes **Stratton, Jane Brook, parts of Midvale, Swan View and Red Hill**

June 2023



LOCAL AREA PRIORITIES FOR 2022-2027



COMMUNITY ENGAGEMENT HIGHLIGHTS



BACKGROUND: SWAN VIEW LOCAL AREA THEN AND NOW

www.swan.wa.gov.au

 /cityofswan

 /cityofswanwa





Acknowledgement of Country

Ngalak Maali Boodja Kaditj

Wadjuk Moort Noongar Boodjara

Baalap Kalyagool Noyyang

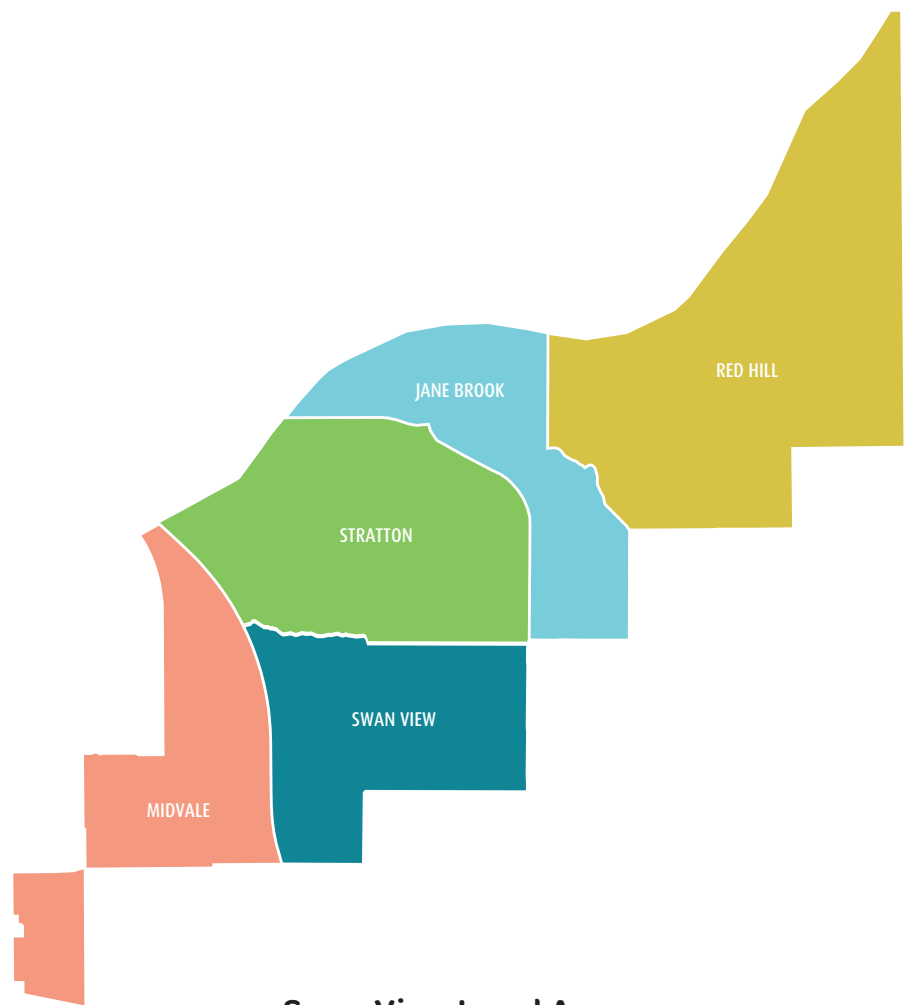
Boodja Kep Moort

Ngalak Kwabaduk Wirn

Kabarli Bworan Kora Kora

Yeyi Ngoongoolong

The City of Swan acknowledges the traditional custodians of this region, the Whadjuk people of the Noongar Nation and their continuing connection to the land, waters and community. We pay our respects to Elders past and present, and their descendants.



Swan View Local Area

Contents

A message from the Mayor	2
What is a Local Area Plan	4
Swan View Local Area Priorities	6
Community Engagement Summary	8
Background Report	10



A message from the Mayor

The City of Swan comprises a large land area with diverse communities. Planning for such a diverse area requires creative priorities.

Local Area Plans provide the opportunity to recognise the unique character and needs of these diverse communities.

Local Area Planning involves local community members working together with the City to identify the specific issues affecting their community and, to produce a plan that provides solutions to meet the priorities of their local area in support of its unique character.

The Local Area Plan is therefore an important document for the City to plan for infrastructure and services and manage change at a local level.

The City appreciates the tremendous support and contribution made by community members and other stakeholders in developing the Swan View Local Area Plan.

Cr David Lucas
Mayor, City of Swan





What is a Local Area Plan?

Local Area Plans (LAPs) provide the opportunity to recognise the unique character and needs of our diverse communities. They focus on planning for the management of future growth as well as providing community services.

Local area planning integrates with the Strategic Community Plan (SCP) and the Local Planning Strategy (LPS) in order to inform corporate business planning to achieve place based planning and service delivery.

The priorities are established through the community engagement conducted with the local community. Outcomes of the LAPs, importantly, also provide feedback to the Local Planning Strategy and the Strategic Community Plan.

The Local Area Plan's comprise of a Community Engagement Background Report, the Community Engagement summary and the Local Area Plan that identifies the community's top priorities.





Swan View LAP Process





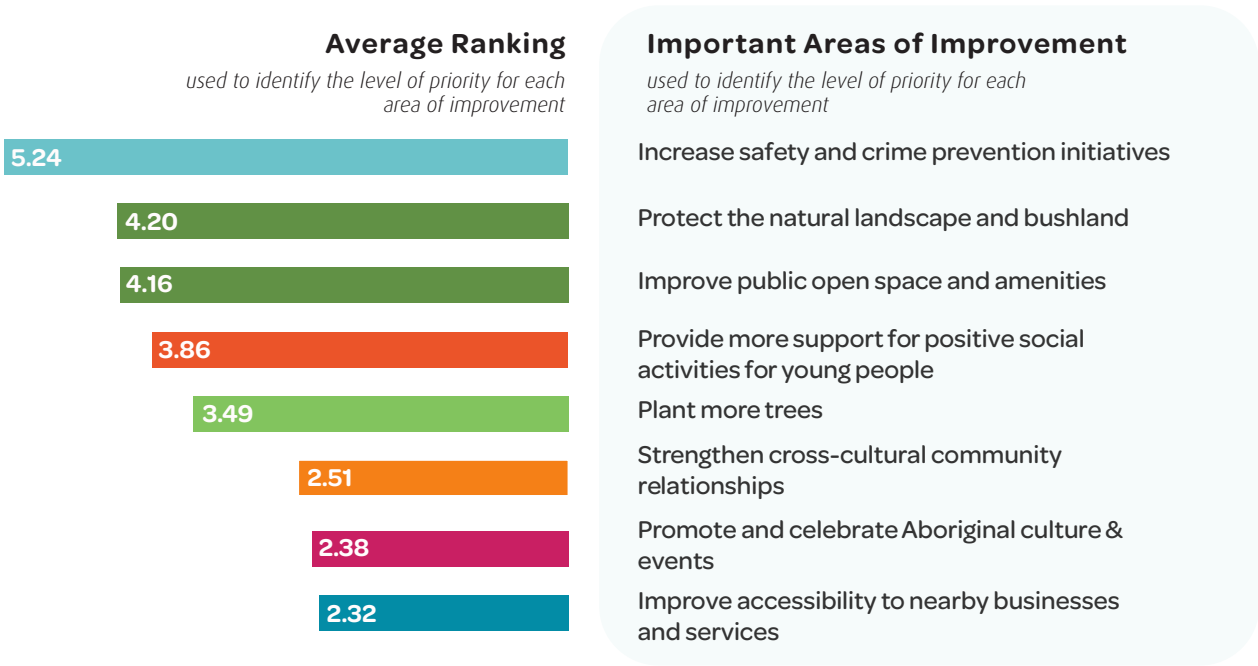
Swan View Local Area Priorities

Swan View Local Area priorities outline the community’s priorities, which show what is most important to the communities in Stratton, Jane Brook, parts of Midvale, Swan View and Red Hill for the next five years (2022-2027).

How were the priorities identified?

The community was invited to complete a survey including options to note and rank all relevant areas of improvement when thinking about their neighbourhood. The survey listed a few considerations and welcomed participants to specify any other needs or concerns they would like to see addressed by the City in the next five years.

The following diagram shows the survey results based on 253 responses received during the initial engagement.





Priority 1

Increase safety and crime prevention initiatives



Priority 2

Support and improve natural landscapes, bushland and public open spaces



Priority 3

Provide more support for positive social activities for young people



Priority 4

Increase local tree canopy by planting more trees



Priority 5

Promote and strengthen cross-cultural community relationships



Priority 6

Improve accessibility to nearby businesses and services



Community Engagement

The local area priorities were shaped by more than 310 community members, who participated in a two-phase community engagement program.

The engagement plan involved a range of workshops and events to encourage all community groups and members of all ages to have their say and then review the future priorities for Swan View local area.

Community Engagement Design

The community engagement comprises of two parts summarised below. Detailed outline of the engagement undertaken to define Swan View local area priorities is overleaf.

PHASE ONE

Swan View local area residents, workers and community members were invited to share what they believe is **important** for their area over the **next five years**

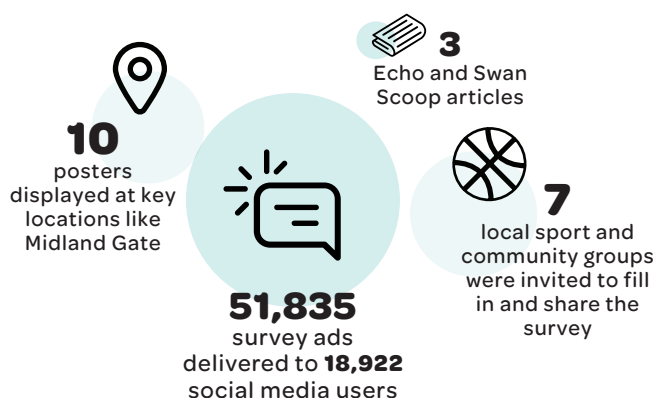
Priorities are drafted based on the feedback

PHASE TWO

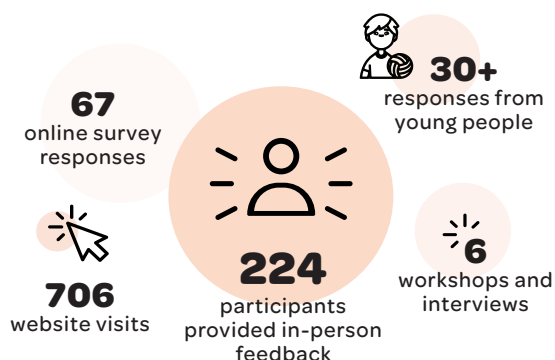
Priorities are reviewed by community and **suburb-specific actions** that align with these priorities are shared with the City

Priorities are finalised and published as part of **Swan View Local Area Plan** to inform the future City's planning and operation

How was community invited?



How did community engage with us?





Phase One

26 September - 7 November 2022

This phase focused on identifying priorities for Swan View local area through a 'Have Your Say' survey and feedback from individual workshops.

The survey invited participants to provide and rank all considerations they believe are important for their area.

In the six weeks of engagement, **253** responses were received.



Events

Our team attended a number of popular local events to promote the survey and seek in-person feedback.

- **Swan View Agriculture and Art Society Festival** on 1 October
- **NAIDOC event** on 4 October
- **Headspace AGM** on 5 October
- **Jane Brook Association Morning Tea** on 30 October
- **Midland Gate Drop-in** on 4 November



Workshops

Five in-person workshops were organised with the following local groups to capture their needs and views on the future of their areas.

- **Swan Group** at Midland Club S
- **Funky Friday** at Midland Club Y D
- **Swan View Senior High School's Student Council** Y
- **Sunshine Club** at Senior Citizens Building S
- **Ingenia Gardens Retirement Village** S
- **Stratton Youth Centre Group** Y

Priorities were formulated based on 253 submissions

**SWAN VIEW
LOCAL AREA
PRIORITIES**

S seniors Y youth D people with disabilities

Phase Two

18 November 2022 - 9 January 2023

This phase focused on confirming the priorities identified in Phase One via a survey. This second survey provided an opportunity to specify what in their view can be done by the City to address these priorities in their neighbourhood.

In the seven weeks of engagement, **109** submissions generally confirmed the priorities and provided multiple suggestions on how they can be addressed locally.



Events

Our team organised three drop-in sessions to promote the follow-up survey and seek in-person feedback about addressing the priorities on suburb level.

- **2x drop-in sessions at Stratton Shopping Centre** on 7th and 16th December
- A draw of **10x \$25** and **10x coffee vouchers** was facilitated to encourage participation
- Drop-in session at Midvale Woolworths on 20th December

Finalised priorities are to guide the next five years of City's work in Swan View local area

**SWAN VIEW
LOCAL AREA
PRIORITIES**

**LOCALISED
SUGGESTIONS**

Proposals and suburb-specific feedback will be shared and communicated internally with the relevant City teams as part of LAP process



Background Report

This section provides an overview of the Swan View Local Area's social, environmental and physical context, which includes key projects, upgrades and local services.

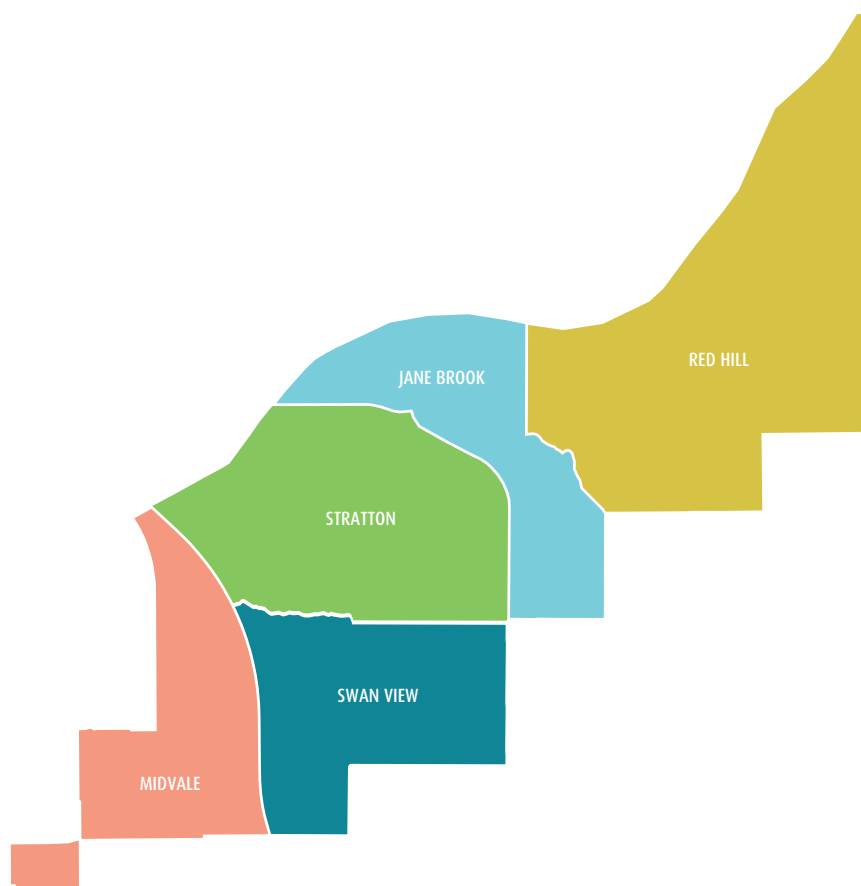


Swan View Context

Located in the Southern portion of the City of Swan, the Swan View local area is made up of the suburbs of Stratton, Jane Brook, part of Midvale, part of Swan View, and part of Red Hill.

Swan View is located approximately 25km north east of the Perth CBD, and 5km west of the Midland Strategic Metropolitan Centre. The Swan View local area is bound by Toodyay Road in the north, the Shire of Mundaring in the east, Murchison Drive, Talbot Road, Blanchard Road, Myles Road and Morrison Road in the south, and Roe Highway and Morrison Road in the west.

The Swan View local area is well connected to other parts of the Perth Metropolitan Region by regional transport links. Its proximity to Midland, the Swan Valley, Darling Scarp and John Forrest National Park contributes positively for the community of the Swan View local area.



Map 1: Swan View Local Area Suburb Breakdown



Swan View Local Area Then and now 2016-2022

In 2015, we held three workshops with the Swan View local Area community to hear what you liked, what your concerns were and what you'd like to see improve in the local area.

The results of the workshops were collated and relevant actions were developed in response to the communities needs, and also informed the key priorities for the area.

These actions included projects and services that were reported on annually and with updates given across the City's business units. Moving forward, the City will share these actions and outcomes on our website, e-newsletter and social media channels.

What's changed in Swan View since the last LAP?

- General road infrastructure upgrades to support increasing vehicular traffic movements for local traffic and wider network movements. This includes the planning of the Orange Route, which is a key State government project.
- Upgrades to cycle and pedestrian paths along Farrall Road, adding value to the amenity of the local area.
- New additions to local parks and community centres including new pavillions and playground upgrades.

What key concerns have we heard since 2015?

- The area needs better support services to respond to an ageing community;
- The need to improve responses to bushfire prone areas through mitigation strategies and working with the community; and
- Loss of biodiversity in the area due to new development sites.

How has the City improved the engagement process

The engagement process has been refined to focus on understanding what the priorities for each local area are and how the community wants the City to address those priorities. This means we'll know exactly what areas the Swan View community want the City to focus on for the next five years.

Engagement will be done through an online platform that you can access from your own home on your own device. This means you won't miss out on having your say on the future of your community. Access the engagement platform at your own time and pace. Instructions are provided, but if you need assistance, City staff will be scheduling public drop-in sessions at local facilities to assist.

The City will also provide annual updates on what is being done in Swan View to address the community's priorities and let you know once the updates are live on the City's website.

Swan View Local Area Assets

Our assets

John Forrest National Park
Jane Brook Foreshore Reserve
Blackadder Creek Reserve
Stratton Community Centre
Stratton Youth Space
Stratton Skate Facility

Our active parks

Swan View Oval Playing Field
Farrall Oval Playing Field
Dorrigo Park
Sherlock Park
Cockman Park
John Stone Park
Kangaroo Court Park
Swan View POS
Augustus Park
Bourke View Park
Wiltshire Park,

Our proposed assets

Orange Route
Reserve 54009 on Huntsman Terrace



Community statistics



12,341

2021 estimated
resident population



6.5%

Aboriginal and Torres
Strait islander population



2.54

Average household
size



23%

Residents born
overseas



37 yrs

Median age of
residents

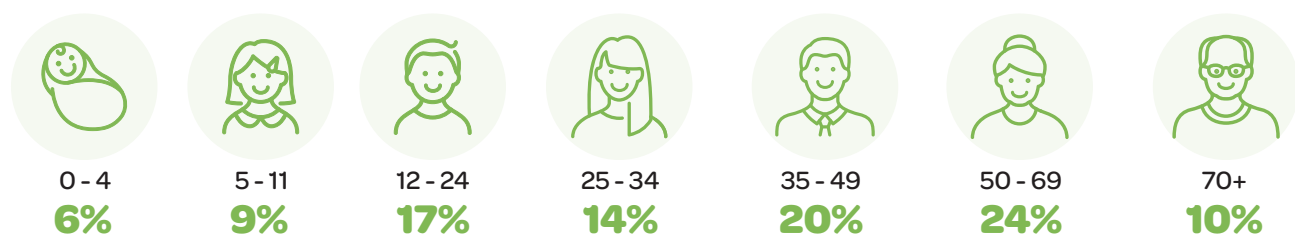


Social Environment

Population

The social environment of any local area reflects the identity of the community through the analysis of the population and the factors that influence this. By recognising these factors, the City is able to identify and plan for the people who live in each area to apply informed planning that reflects the needs of the community. In 2021, the Swan View local area had an Estimated Resident population of 12,341, representing 7.8% of the City's overall population.

Age structure



Children and early years development

There are a range of programs and facilities accessible outside the local area that provide for children and early years (children aged 5-11 years old) who represent 9% of the population.

The community is encouraged to utilise nearby facilities such as the Midland Library and Swan Active Midland, which provide a range of programs and activities for kids throughout the year that attract children from that catchment. At Swan Active, programs include:

- Swimming lessons
- School holiday activities
- Creche
- Kindy gym;
- A 10 week coaching programs in netball, basketball, soccer and cricket which run throughout the school terms.

Midland Library offers weekly activities such as Storytime and Rhymetime, as well as a variety of seasonal school holiday events and activities.



Young people

Stratton Youth Centre 'Stratton Edge' is a drop-in facility for 12-17 year olds looking for a safe place to attend. The facility includes a table tennis, pool table, basketball, arts and crafts, soccer, football and a skate park. The team at Stratton Youth Centre run workshops for cooking, money and budgeting, health, relationships, art and music.



Photo 1 and 2: Stratton Youth Space

Ageing Population

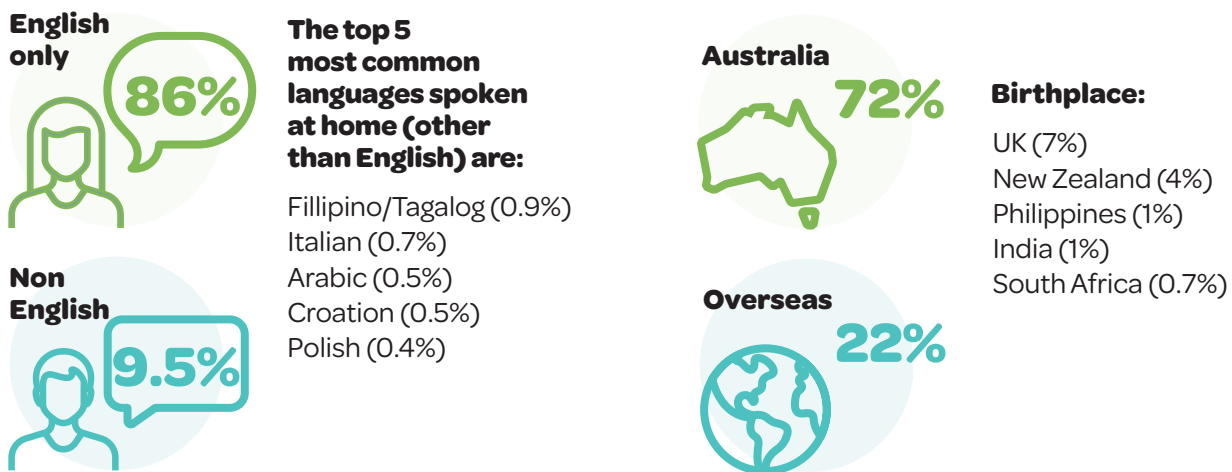
Swan View local area has an ageing population, with a higher proportion of people in the older age groups (60+ years) than the City of Swan. From 2016 to 2021, the most significant growth was in persons aged 70 to 84.

The City's Community Care Services is a citywide service committed to providing services to all eligible community members. Community Care Services offer a range of high-quality and essential services through contractors to deliver in-home support services in the areas of domestic assistance, personal care, individual social support, respite, and gardening. The office is located in Midland, and services are accessible to the ageing population of Swan View. This includes access to special interest groups such as men's groups and dementia specialised services. Community Care Services has a fleet of 19 vehicles to provide a personalised transport service to their clients. This assists clients with accessing medical appointments, shopping and social trips within the metropolitan area.

In addition, Swan Active Midland also provides services to aged residents of Swan View through various fitness and health activities. The City holds its highly successful Ageing Disgracefully event annually.

Culturally and Linguistically Diverse (CaLD) Communities

Midland Library offers a free Social English Club program every Friday, where conversational English is encouraged over tea, coffee and cake. The sessions are open to anyone with any background or level of English. For residents of the Swan View local area, the library also offers the pop-up space in the foyer to CaLD organisations who would like to showcase their organisation, services and activities.



Reference: Profile ID 2016

Indigenous Communities

The Swan View local area has the highest proportion of Aboriginal and Torres Strait Islander residents in the City of Swan, at 6.5% of the population. This is significantly higher than Greater Perth at 1.8%. The City's Reconciliation Action Plan (RAP) was formally endorsed and adopted by Council in April 2022. The RAP will formalise a commitment between the City and the Wadjuk-Noongar and other Indigenous communities living and working in the City of Swan. The City held a launch event in June 2022 in Midland to coincide with Reconciliation Week and the start of Naidoc Week celebrations in July, which included a showcase by local Indigenous artists and various events across the City of Swan.

Community Safety

The City's Community Safety Plan identifies key priority areas for improving community safety across the City. This includes measures to detect, deter crime and address the underlying causes of crime, address personal and community safety issues, and increase coordination and responsiveness.

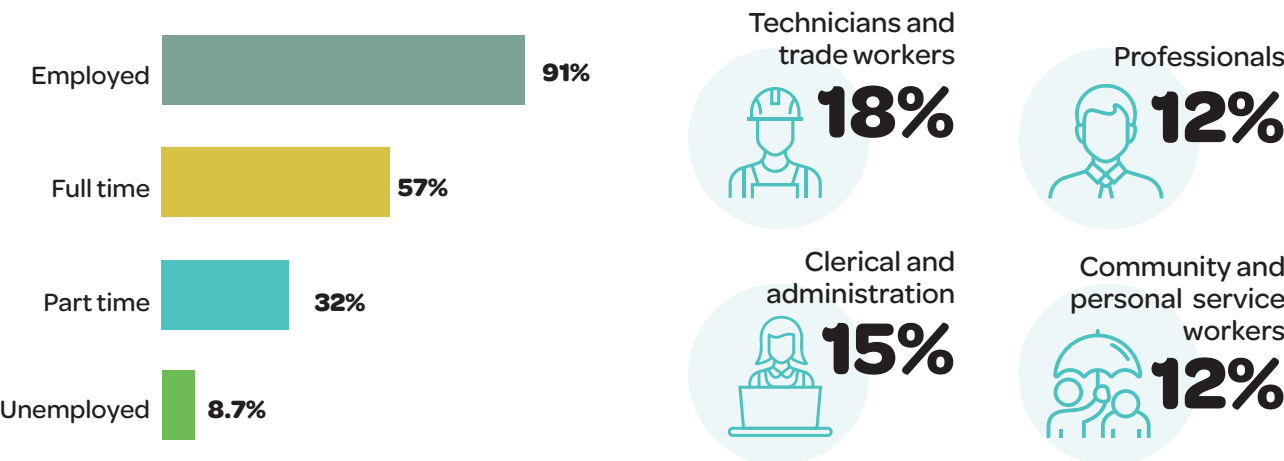
Bushfire safety is important for the Swan View community. The City's Community Safety team will increase inspections in the Talbott Road bushland and private property north of Toodyay Road. The City also partners with the Shire of Mundaring to manage bushfire mitigation processes.





Economic Environment

Employment status



Employment and Economy

The Swan Business Engagement Program assists businesses through information provision, business facilitation and potential business opportunities. The City’s team of qualified and experienced professionals help residents start, grow or relocate their business.

The City supports local businesses through many initiatives, particularly throughout the COVID-19 pandemic. The Business and Tourism team contacted many businesses to provide a comprehensive list of opportunities from various industry providers to help businesses with employment, training or upskilling, and knowledge on rebuilding and recovering.

Commercial Centres

Swan View local area is predominately residential with some commercial tenancies that provide services to the community (See Map 2).

Swan View’s proximity to Midland Gate Shopping Centre creates the need for only small-scale retail within the local area. This may limit economic opportunities; however, this supports the broader reach of Midland as the City’s Strategic Metropolitan Centre. The centres in Map 2 are categorised as Neighbourhood Centres, providing day-to-day and weekly shopping needs and other services.



Map 2. Commercial Centres



Natural Environment

Biodiversity

Swan View local area is located nearby to many highly valuable environmental assets. These include Blackadder Creek, Jane Brook and the Swan River. Swan View local area is also located between two highly valued amenity landscapes, the Darling Scarp and the Swan Valley, which contain significant bushland areas, including John Forrest National Park.

Existing remnant vegetation is predominately within the Talbot Road Bush Forever site, Department of Housing bushland and the John Forrest National Park. 'Friends of Groups' for the Swan View local area include Friends of Blackadder Creek, Jane Brook Association, and Friends of May Brook.

Tree canopy

The City has developed an Urban Forest Plan (2019-2039) which identifies tree canopy coverage for each local area. The plan supports the City's target of increasing canopy cover by 1% each year. As of 2016, the Swan View local area had the following canopy coverage.



Midvale
8.39%



Jane Brook
12.2%



Stratton
15.3%



Swan View
17.59%

Blackadder-Woodbridge Eco Corridor Assessment

The City has commissioned an ecological assessment of the Blackadder-Woodbridge Eco Corridor (between Swan View and Viveash). This includes a vegetation survey, fauna habitat mapping, weed survey, significant tree assessment, and observational notes on management issues.

This area is important as it links other bushland areas in providing habitat, sources of food, resting and nesting fauna, and provides a level of amenity for local residents.

The City is developing a program and expanding current maintenance work to improve the vegetation corridor. This will raise awareness and increase community capacity within the Blackadder-Woodbridge Eco Corridor. Expanding works could include weed control, planting activities, erosion control, invasive species control, community engagement and education workshops, and supporting 'Friends of Groups'. The City is also supporting a collaborative project by Curtin University, 'Reconnecting to Rivers', which aims to document and map Whadjuk knowledge of the area.





Built Environment

Aboriginal Significant Sites

The significance of Aboriginal heritage within development sites is important to recognise and protect. There are several publically recorded Registered Aboriginal Sites (DoAA) in Swan View. These sites include but are not limited to: Green Bullfrog Dreaming, Talbot Road, Farrall Road East, Jane Brook North, Blackadder and Woodbridge Creek, Jane Brook, and Talbot Road/Toodyay Road. Approval is required under the Aboriginal Heritage Act 1972 for any development on land where sites of significance are registered and will require consultation with local Aboriginal people.

The City will review its Local Heritage Survey this year and wishes to incorporate local Aboriginal heritage in its listings, where appropriate. This is currently in the planning stage and will require approval and engagement with local Aboriginal groups. This reflects the recognition by the City to address and acknowledge Aboriginal heritage.

Housing



14.6%

of dwellings are
medium to high density

compared to Greater Perth with
25%



Fully owned 21.8%

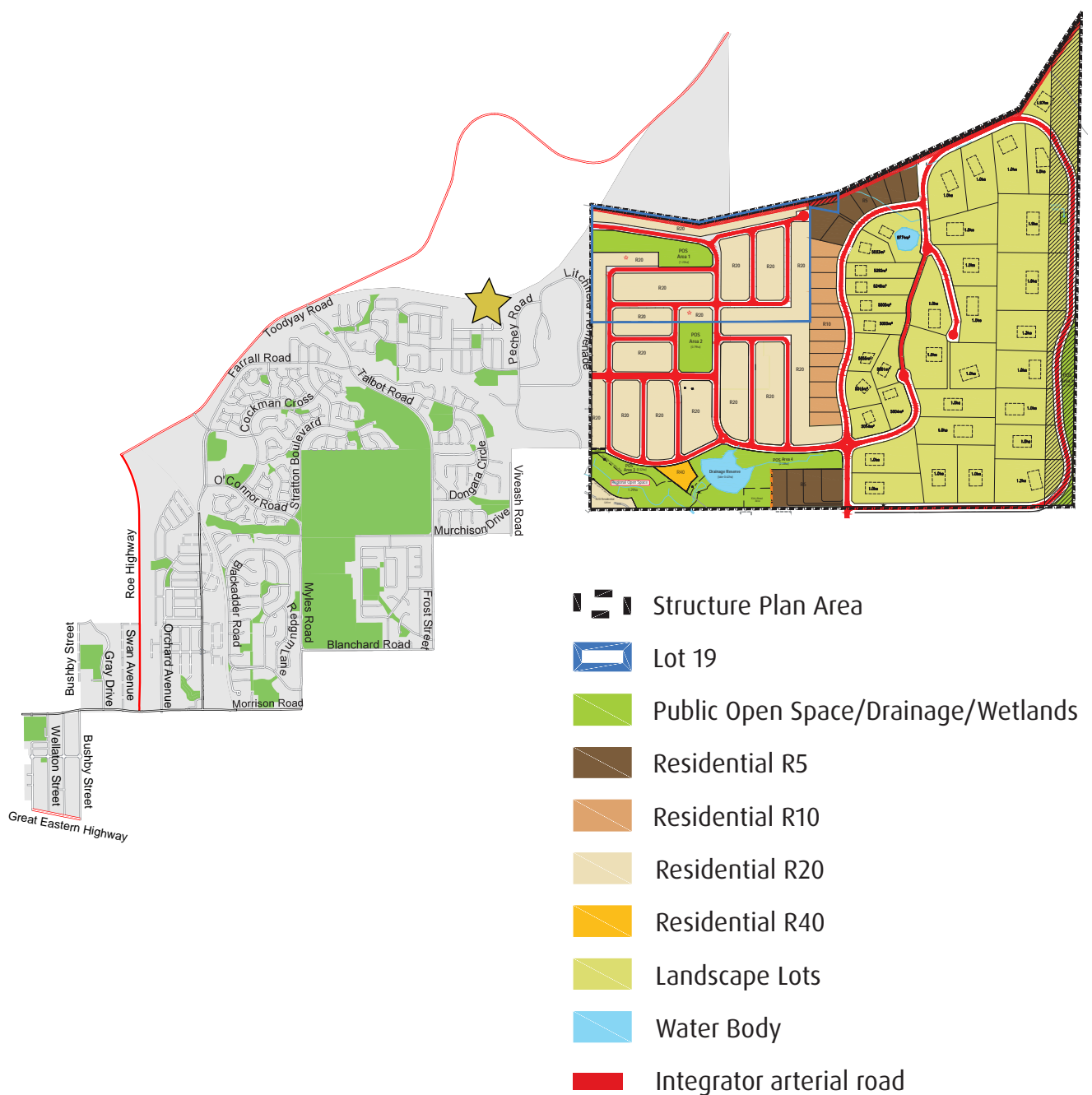
Mortgaged 50.7%

Rented 15.9%

Social Housing 4.9%

New Development Opportunities

The Jane Brook Structure Plan was adopted by Council in August 2018. Map 3 illustrates the staging of the plan. The structure plan provides for four public open spaces ranging from 1.23 hectares to 0.71 hectares. The dwelling target of the area is 359 dwellings, with 10 dwellings per site hectare.



Map 3. Jane Brook Structure Plan Area

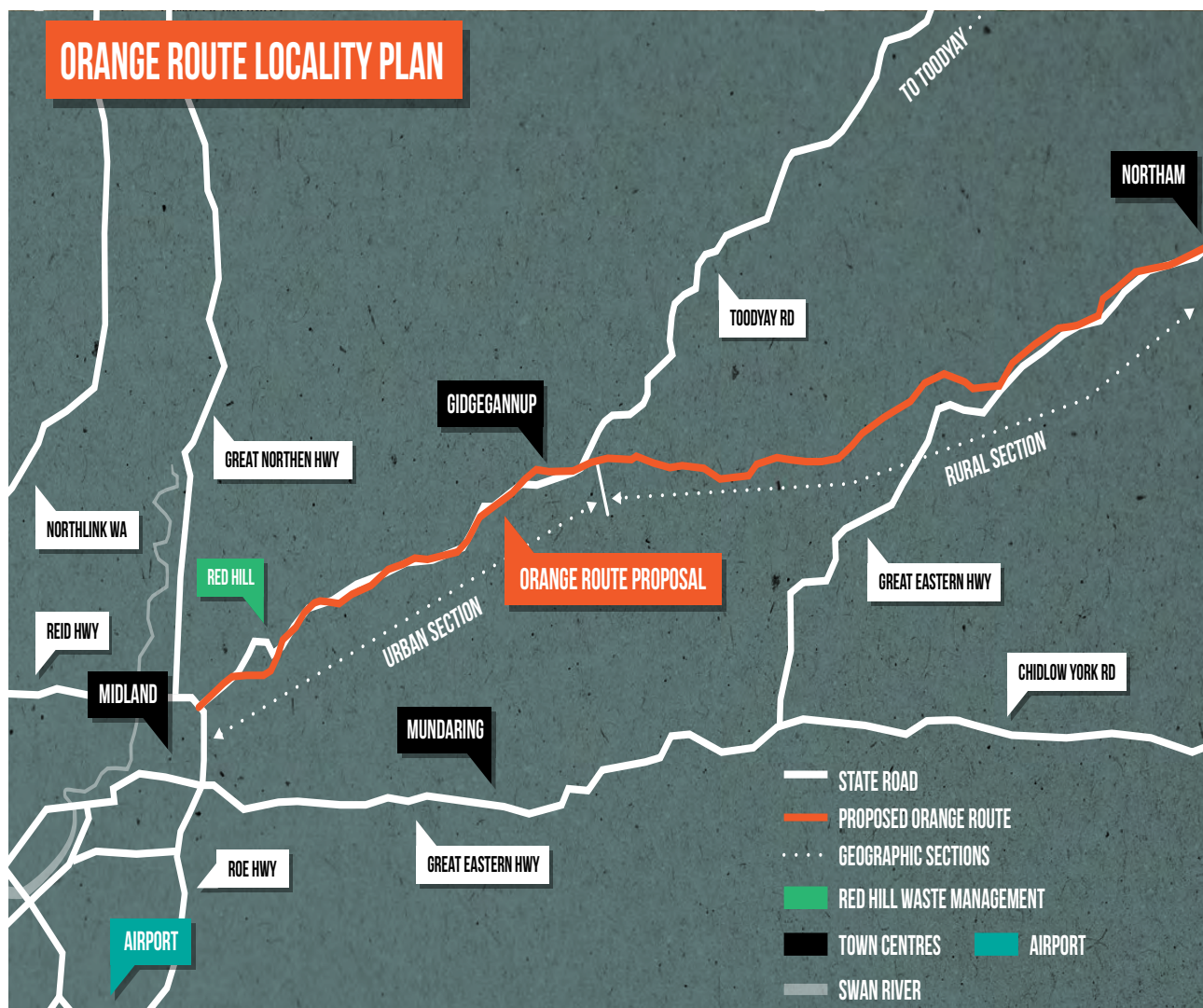
Public Open Space and Community Facilities

The planning of all open spaces is based on hierarchy, function, use, and intended length of stay, as identified in the City's Standard of Provision Framework. The hierarchy ensures that open space and facilities are appropriate for their intended use and catchment. Local parks cater for shorter use and smaller catchments, where as larger, sporting open spaces cater for longer uses and larger catchments and therefore require more infrastructure such as toilets and car parking. The table below provides an overview of some of the walk trails, parks, picnic areas and playgrounds in the Swan View local area.

Park	Hierarchy Level	Function					Amenities
		Recreation	Sport	Nature	Kick about	Play space	
Swan View Oval Playing Field	Neighbourhood	✓				✓	 
Farrall Oval Playing Field Park	Neighbourhood	✓	✓			✓	 
Bremmer Park	Local						
Dorrigo Park	Neighbourhood	✓				✓	 
Huntsman Park	Local						
Sherlock Park	District & Neighbourhood	✓	✓			✓	 
Cockman Park			✓			✓	 
Bombay Entrance Park	Local					✓	 
Brilliant Rise Park	Local					✓	 
Campolino Park	Local					✓	 
John Stone Park	Neighbourhood	✓	✓			✓	 
Kangaroo Court Park	Neighbourhood	✓				✓	 
Natham Square Park	Neighbourhood						 
Swan View POS (Spinebill)	Local	✓				✓	 
Augustus Park	Neighbourhood	✓				✓	 
Bourke View Park	Neighbourhood	✓				✓	 

Road Network

The Orange Route is a highway-standard road that will connect Midland to Northam. This will be part of the first stage of the Perth to Adelaide National Highway. This will include a major upgrade to Toodyay Road (between Roe Highway and Lilydale Road) and Great Eastern Highway (between Wundowie and Northam). The project is estimated to cost \$1.2 billion. The new route will provide a more efficient journey in and out of Perth.



Since the previous Swan View LAP, Farrall Road has been upgraded to a dual carriageway for the southern portion up to Blackadder Creek and provided additional stacking length at the Morrison Road intersection, improving pedestrian crossings and right turn signals at the intersections traffic lights. The new and upgraded local street network supports movement of traffic, pedestrians and cyclists. The upgrade also consisted of a grade separated rail crossing, street parking and street tree planting on verges, resulting in a safer pedestrian experience.

North Link WA project was also completed in 2020. The project was funded by the Federal and State governments with a \$1.02 billion investment. This project linked to Gateway WA, servicing regional traffic movements to commercial and industrial areas such as Malaga, Kewdale, Perth Airport and Perth CBD. This removed pressure from Great Northern Highway by shifting the majority of routes for heavy vehicles.





www.**swan**.wa.gov.au



City of Swan
2 Midland Square Midland
PO Box 196 Midland WA 6936
9267 9267



This document can be made available in
alternative formats on request.

