



BORDEAUX LANE

THE BROADWAY

COMMERCIAL DISTRICT

SINGLE STOREY RESIDENTIAL

SINGLE STOREY RESIDENTIAL

COMMERCIAL DISTRICT

MAFFINA PARADE
TRAFFIC APPROACH EAST

BOWLS CLUB

AVELEY
SECONDARY
COLLEGE

MINOR TRAFFIC NOISE

SITE

TRAFFIC APPROACH NORTH
MAFFINA PARADE

CRICKET PITCH

PLAYGROUND

ELLENBROOK
DISTRICT
OPEN SPACE

ELLENBROOK
COMMUNITY PAVILLION

PLAYGROUND /
OUTDOOR GYM

CRICKET PITCH

TALL ESTABLISHED
PLANTING

THE VINES GOLF
COURSE

NATURAL
PARKLAND

ELLENBROOK TOWN
CENTRE 3.5KM

ELLENBROOK
SPORTS HUB

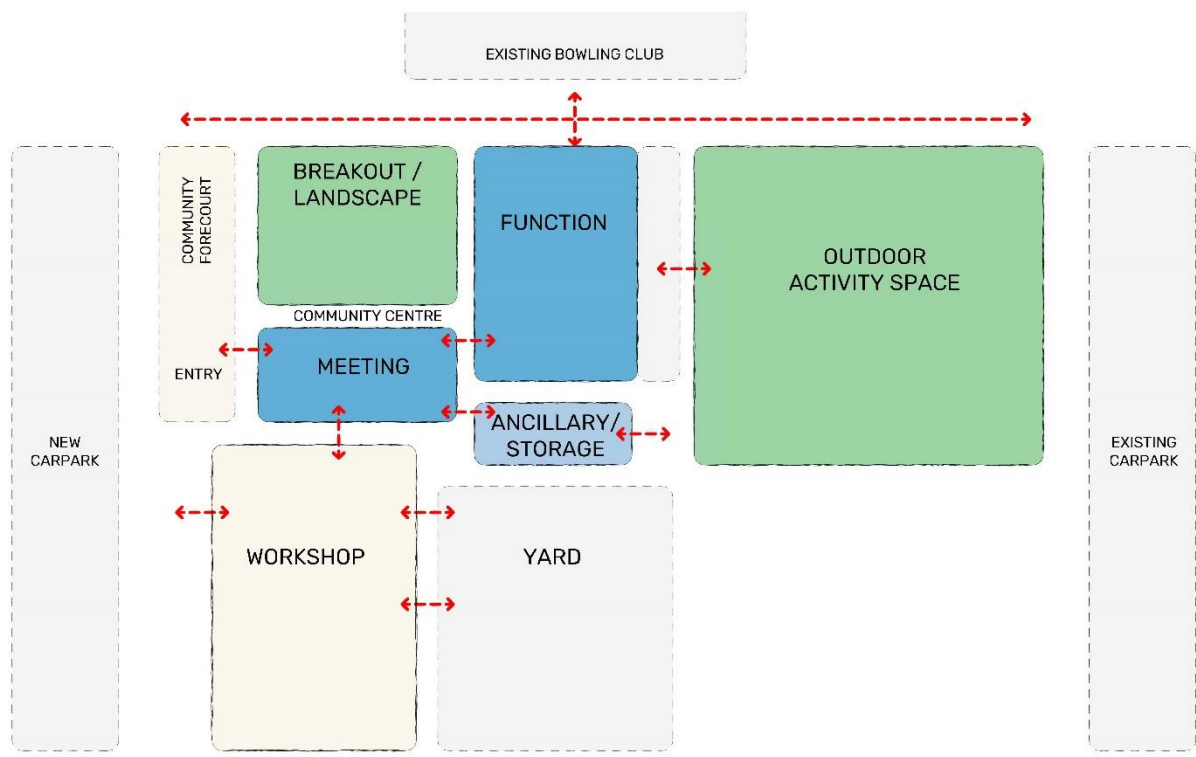
PLAYGROUND

SINGLE STOREY
RESIDENTIAL

TRAFFIC APPROACH SOUTH
CASHMAN AVENUE

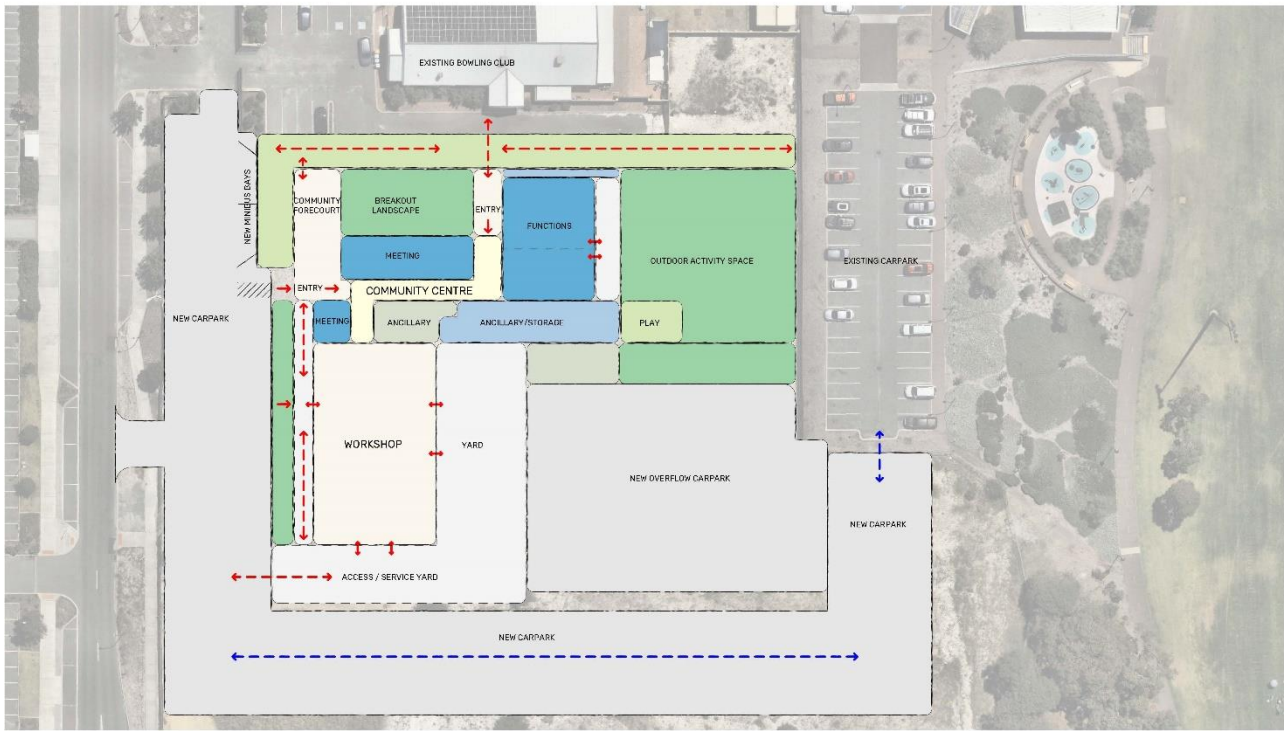
PEDESTRIAN LINK
TO SPORTS HUB

SHADED BENCHES



SK07 SPATIAL RELATIONSHIP DIAGRAM
SCHEMATIC DESIGN JAN 2024

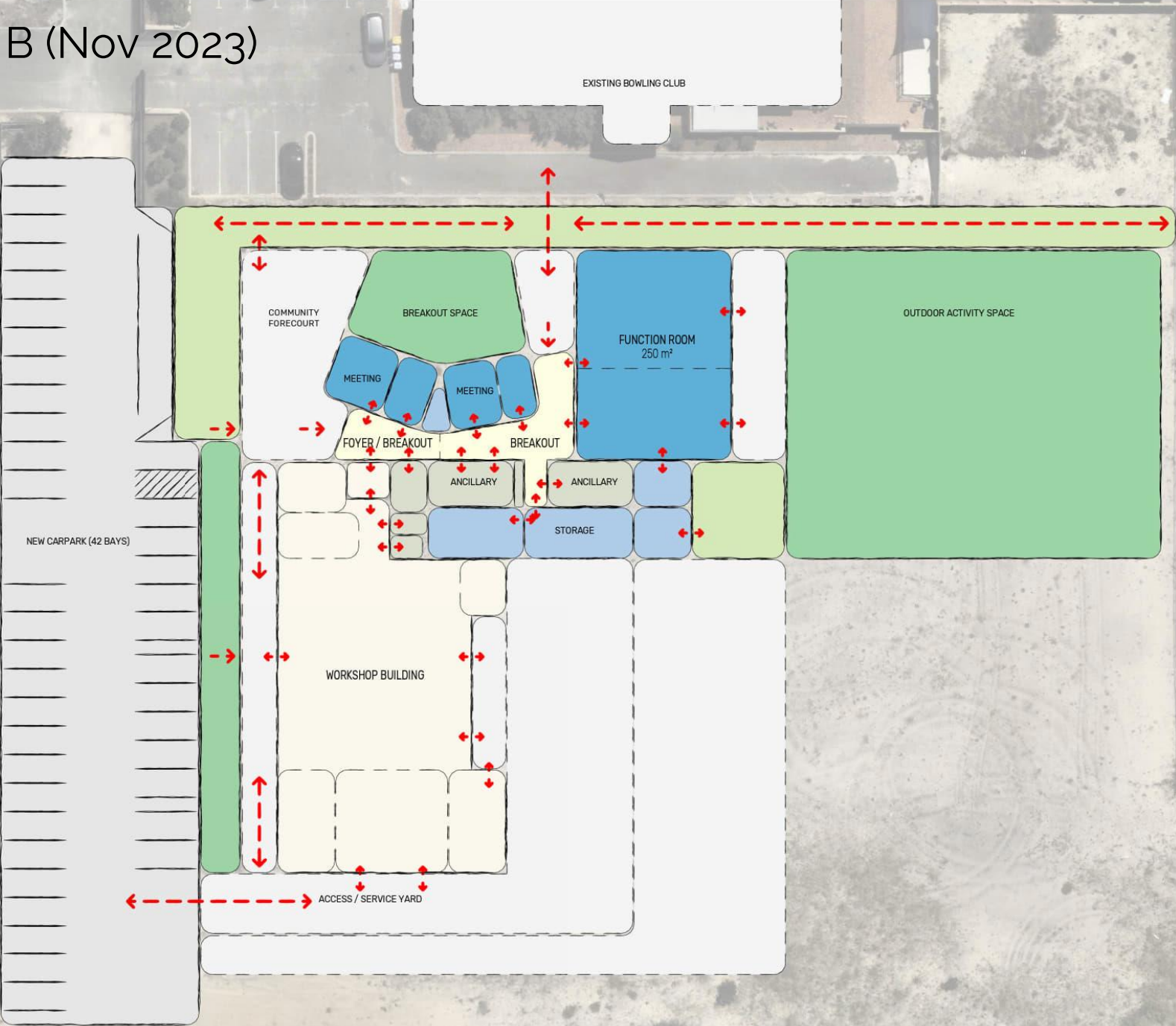
CITY OF SWAN ELLENBROOK COMMUNITY HUB
SITE ARCHITECTURE STUDIO
LEVEL 1.50: KIBRI STREET FICHE 0220/54
T: 08 9448 9657
P: 08 9448 9657

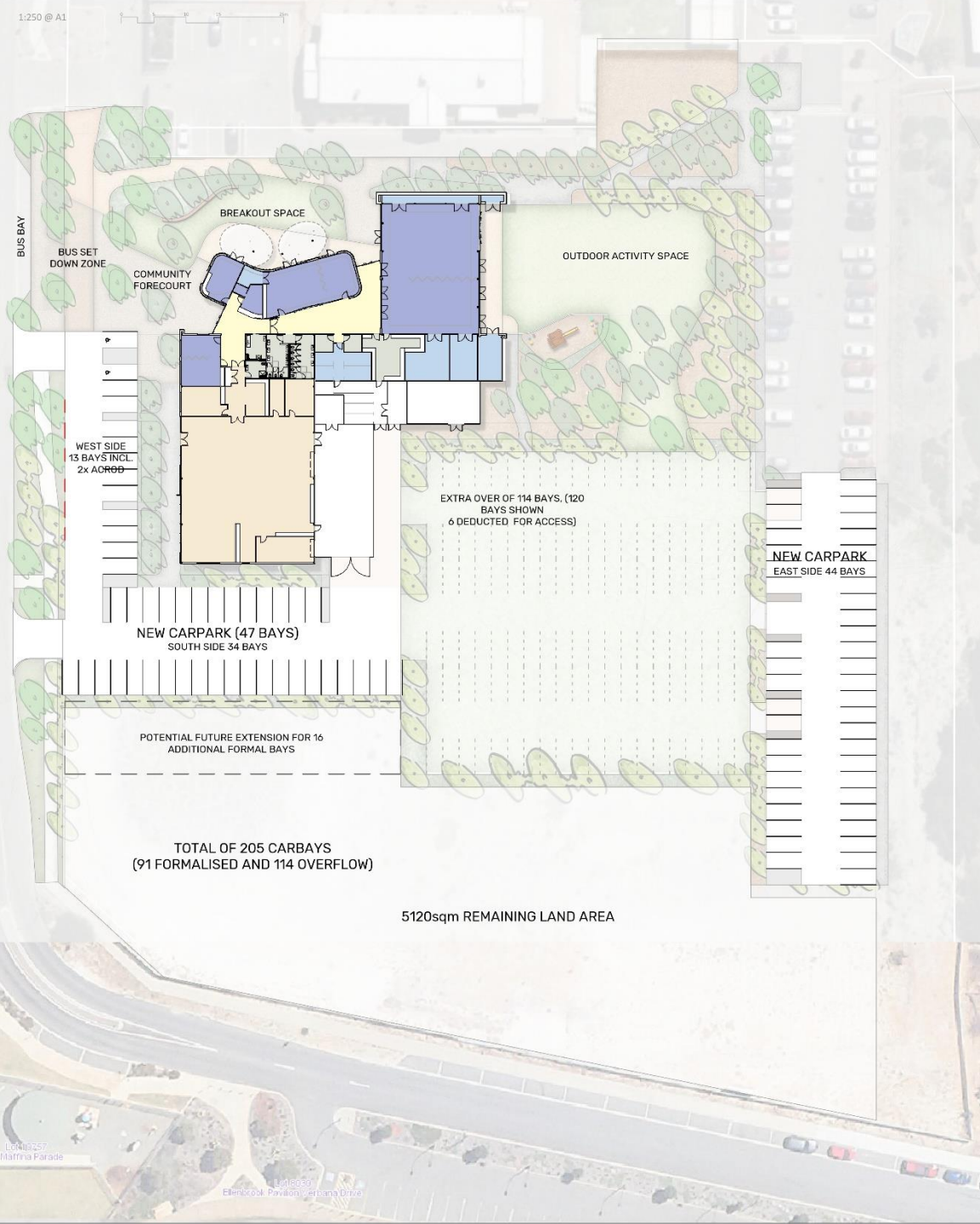


SK08 CONCEPT SITEPLAN - OVERVIEW
SCHEMATIC DESIGN MAY 2024

CITY OF SWAN ELLENBROOK COMMUNITY HUB
SITE ARCHITECTURE STUDIO
LEVEL 1.50: KIBRI STREET FICHE 0220/54
T: 08 9448 9657
P: 08 9448 9657

Option B (Nov 2023)







BREAKOUT SPACE

OUTDOOR ACTIVITY SPACE

COMMUNITY
FORECOURT

FUNCTION ROOM

ACTIVITY ROOM

FOYER / BREAKOUT

BREAKOUT

NATURE PLAY

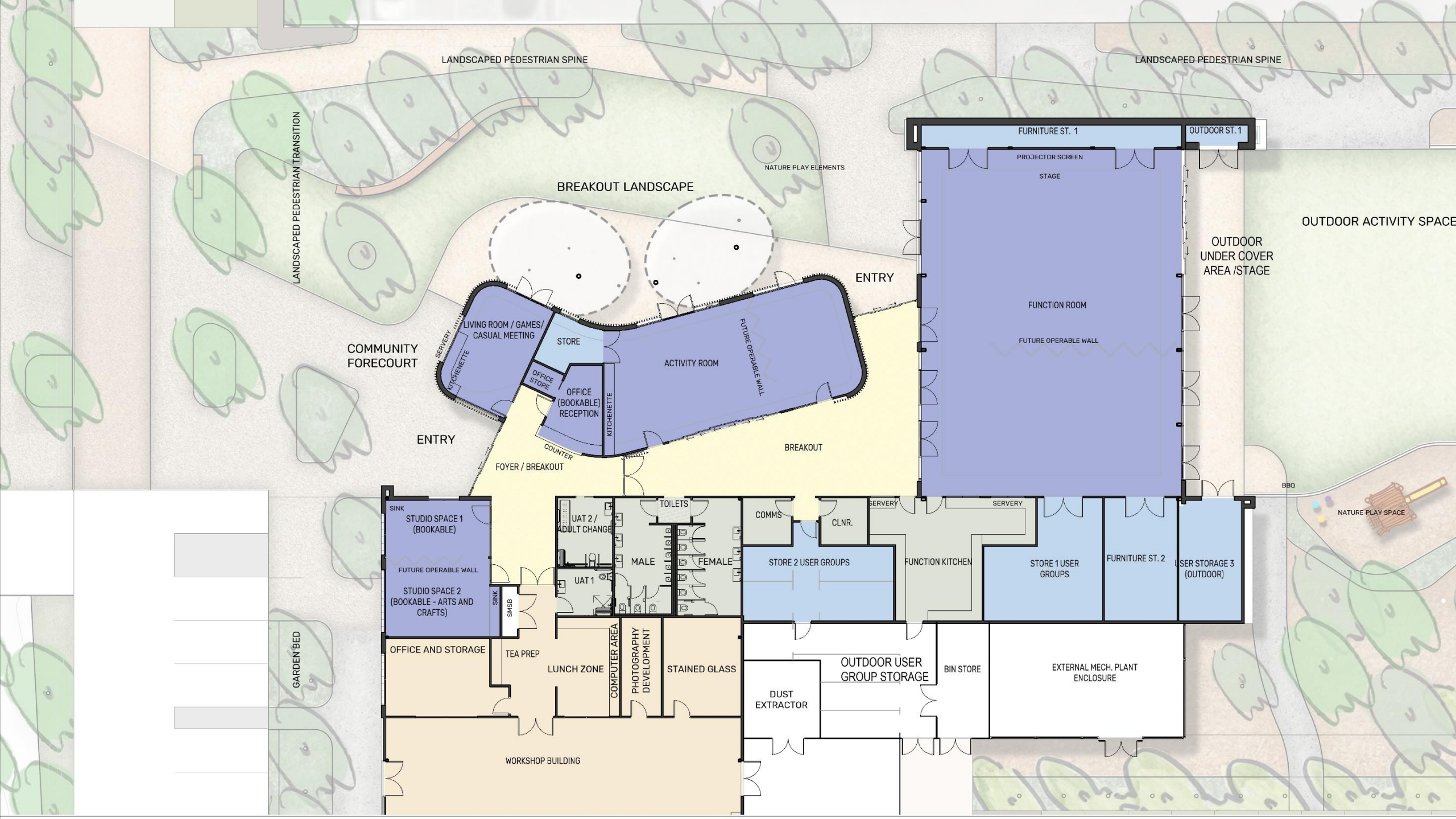
NEW CARPARK

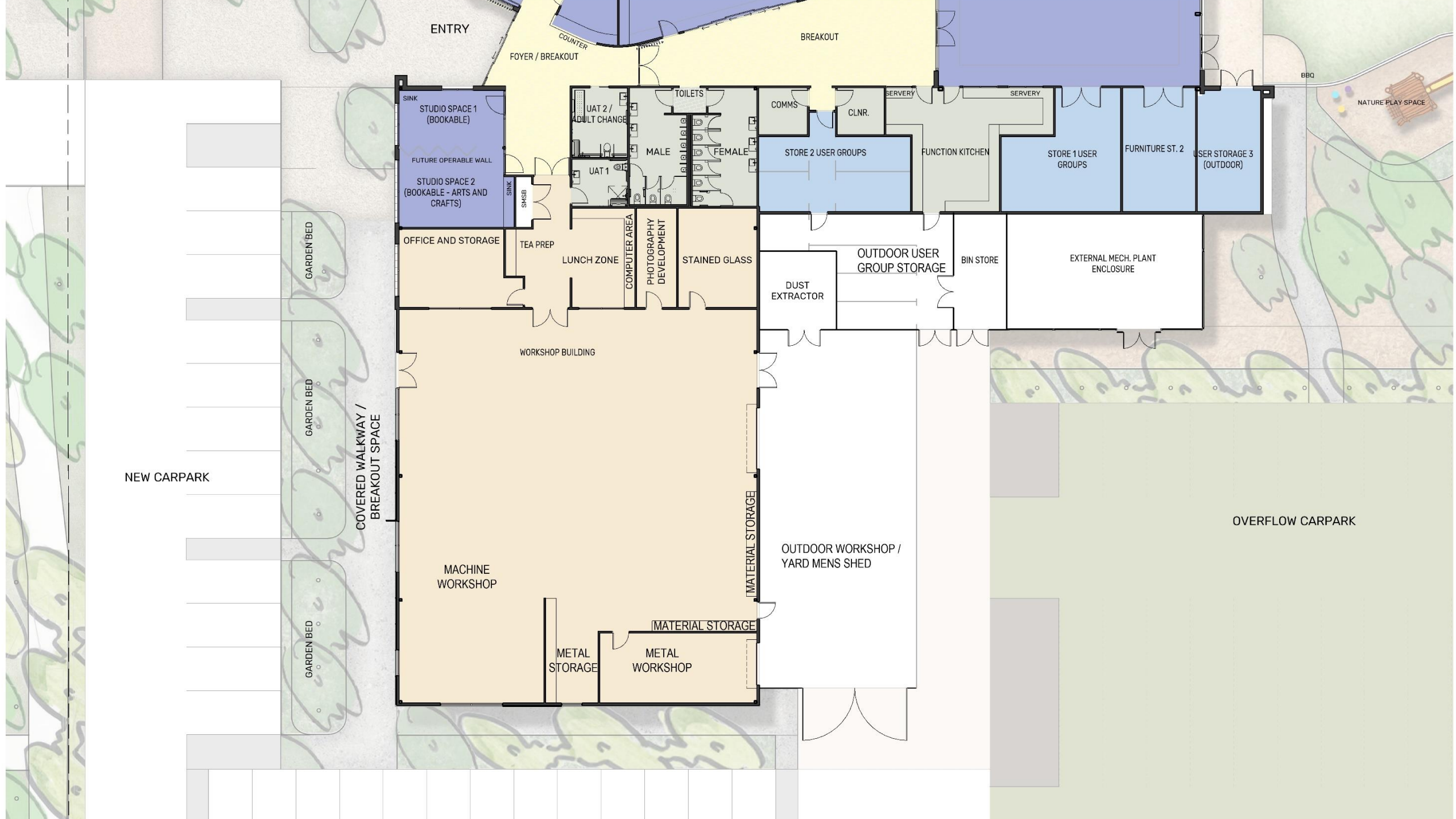
WORKSHOP BUILDING

SERVICE YARD

OVERFLOW CARPARK

NEW CARPARK





ENTRY

BREAKOUT

FOYER / BREAKOUT

COUNTER

BBQ

NATURE PLAY SPACE

SINK
STUDIO SPACE 1
(BOOKABLE)

FUTURE OPERABLE WALL
STUDIO SPACE 2
(BOOKABLE - ARTS AND CRAFTS)

SINK

SMSE

UAT 2 /
ADULT CHANGE

TOILETS

MALE

FEMALE

COMMS

CLNR.

SERVERY

SERVERY

STORE 2 USER GROUPS

FUNCTION KITCHEN

STORE 1 USER GROUPS

FURNITURE ST. 2

USER STORAGE 3
(OUTDOOR)

OFFICE AND STORAGE

TEA PREP

LUNCH ZONE

COMPUTER AREA

PHOTOGRAPHY
DEVELOPMENT

STAINED GLASS

DUST
EXTRACTOR

OUTDOOR USER
GROUP STORAGE

BIN STORE

EXTERNAL MECH. PLANT
ENCLOSURE

WORKSHOP BUILDING

GARDEN BED

GARDEN BED

GARDEN BED

COVERED WALKWAY /
BREAKOUT SPACE

NEW CARPARK

OVERFLOW CARPARK

MACHINE
WORKSHOP

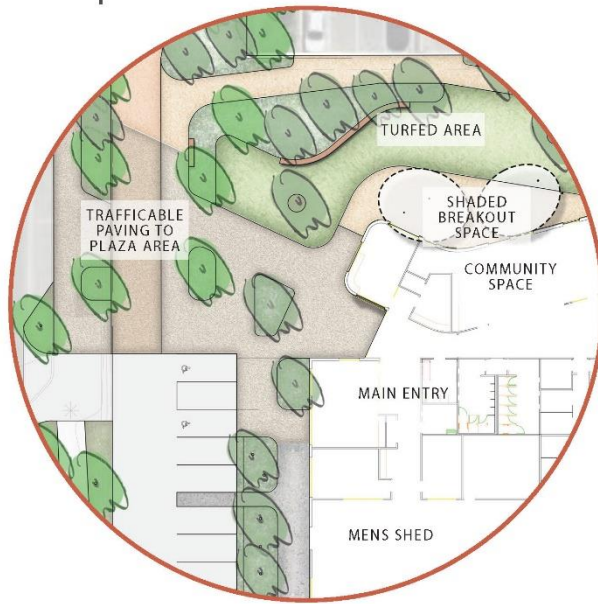
OUTDOOR WORKSHOP /
YARD MENS SHED

MATERIAL STORAGE

METAL
STORAGE

METAL
WORKSHOP

MATERIAL STORAGE



LEGEND

- 01 **Main Pedestrian Entry** - Exposed Aggregate concrete to highlight building entry
- 02 **Northern Courtyard** - Irrigated turf to provide a flexible, sun filled space
- 03 **Breakout space** - Exposed aggregate concrete paving below shade structures
- 04 **Planting** - Native low shrub planting with deciduous trees

- 05 **Seating Walls** - Rammed earth seating walls to define the space and provide seating
- 06 **Pedestrian connections** - Tree lined path to provide a shaded walking path
- 07 **Turf space** - Irrigated turf to provide open, large performance space shaded by trees
- 08 **Trees** - Groves of trees within mulch only areas. Formative pruning to maintain sight lines

- 09 **Fence line Planting** - Native planting and trees to visually buffer fencing to the yard
- 10 **Carpark Trees** - Native trees to the carpark areas. Allow for irrigation to each tree
- 11 **Overflow parking area** - Potential turf overflow parking area (12 months establishment required with no usage. Surface pending anticipated usage)

- 12 **Trees** - Avenue of trees to the western side of the Men's Shed. Shade to path and building
- 13 **Verge** - Supplementary tree planting to the verge. Trees to shade existing path network
- 14 **Pedestrian connections** - Provide clear connections to ECH + the existing path network
- 15 **Secondary Entry** - Exposed Aggregate concrete to highlight secondary entry point



LANDSCAPE ARCHITECTS

LEVEL 1 278 RAILWAY PARADE WEST LEEDERVILLE 6007
T: (08) 9388 9566 E: mail@plane.com.au

ELLENBROOK COMMUNITY HUB

PREPARED FOR SITE ARCHITECTURE
JUNE 2024

C1.104

REV E
750 @ A3





