

Swan Scoop

It's almost playtime!

Epic playground shapes up
Page 5

Allan's life-saving message
Page 3

Budget for a bright future
Page 4

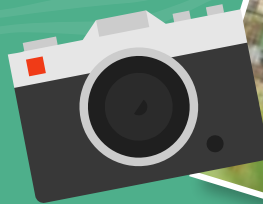
It's time to get Entwined
Page 5

2025 'Get Amongst It' photography competition

Be part of the 2025 calendar and win a \$400 gift card!



Entries close
September 29, 2024
See page 6 for more details.



Spring 2024
Whiteman Ward

 City of Swan

A new look and feel for our Community Care services

City of Swan

Community Care has a new look and feel.

Our Community Care staff and volunteers are passionate about helping people live with choice and independence.

Whether you want a hand getting from A to B, some extra support at home or a social network, they are here for you.



In July, we celebrated a refresh of Community Care, signifying our commitment to creating inclusive and connected communities that have a sense of belonging in Swan.

The new identity is warm, welcoming and inclusive – reflecting the values at the core of our Community Care services and people.

Some of the changes you may notice are:

- A refurbished building, creating a home away from home for members of our dementia specialised service
- New uniforms and signage
- A fresh approach to service delivery
- Acknowledgment of Aboriginal heritage

If you are interested in accessing our Community Care services or helping out as a volunteer, please visit our website.



[www.swan.wa.gov.au/
community-care](http://www.swan.wa.gov.au/community-care)



It's easy to be a great pet owner

City of Swan

An important part of responsible pet ownership is renewing your pet's registration, so if the worst happens and they go missing, you have the best chance of being reunited.

If yours is due this year, you will soon receive a notification to renew your pet's registration.

You can renew the registration between October 10-31, 2024.

The easiest way to do it is online.

You can also pay in person at any of our libraries, our administration building in Midland or at an Australia Post office in Swan.

If you want to reduce the hassle of annual renewals, you can choose to register your pet for their lifetime.



[www.swan.wa.gov.au/pets-and-
animals](http://www.swan.wa.gov.au/pets-and-animals)

Swan Active member's life-saving message

Whiteman Ward

Swan resident Allan Duncan has a heart-stopping story with a life-saving message – and he's still alive to tell it because of his training and the training of those who rushed to his aid.

Mr Duncan, 75, was about 250m into his regular 750m swim at Swan Active Ballajura earlier this year when he felt pain in his wrists.

As someone who swims several times a week, he knew that was not normal.

And his extensive training in emergency response told him it was not something to take lightly.

"My training says, 'if something's wrong, get out,'" Mr Duncan said.

"I could feel my chest getting tighter as I was getting out of the water."

Mr Duncan's concerns were well-founded – his life was in danger and time was running out.

He took a seat on a nearby bench, inserted his hearing aids and told the nearest Swan Active staff member, Eesha Kalyan, he was having a heart attack.

To his relief, Ms Kalyan wasted no time with questions, instead rushing to get help.

Moments later, three other staff members were on the scene – Kaitlyn Cuevas, David Pengelly and Lauren Goddard.

They were all qualified lifeguards with first aid and CPR training.

The Swan Active staff members did their best to keep Mr Duncan calm and focused, while they liaised with St John WA on the phone.

"I don't know what training they had but David was standing by with a defibrillator, Kaitlyn was coordinating and Lauren was chatting to me," Mr Duncan said.

"So I was thinking, 'I'm in good hands'"

The paramedics arrived within minutes and helped Mr Duncan to the waiting ambulance.

His last memory from the drive to hospital was noticing they were travelling along Beaufort Street.

When he regained consciousness, he was in Sir Charles Gairdner Hospital with a very sore chest from where a paramedic had performed CPR.

It was the second time he had suffered a heart attack and the second time he had been brought back to life in the back of an ambulance.

Mr Duncan said our Swan Active staff members "did everything right" and were the first link in the chain that gave him another chance.

He felt an "unfathomable" sense of gratitude towards them and the paramedics.

Now back swimming laps at Swan Active Ballajura, he urged people not to take risks with their heart.

If something felt wrong, the best course of action was to act immediately and boldly.

"What you'll need is a paramedic with a defibrillator, and you only get that by calling an ambulance, so don't prevaricate," Mr Duncan said.

"They might come along and say, 'it's angina', but if you guess wrong, you're dead.

"You'll only survive if you act now."



www.swanactive.com.au

"David was standing by with a defibrillator, Kaitlyn was coordinating and Lauren was chatting to me, so I was thinking, 'I'm in good hands'."

– Allan Duncan



A responsible budget for a brighter future in Swan

City of Swan

Our Annual Budget 2024/25 has laid the foundation for an exciting year of growth for Swan.

Council adopted the budget at a Special Council Meeting on June 26, 2024, when they also passed a rate increase of 3.5 per cent.

The modest increase – lower than Australia's annual rate of inflation – marked only the second rate rise for the City in five years.

"We froze rates for three consecutive years after the onset of COVID-19 to lessen the financial burden of the pandemic on homes and businesses," Tanya Richardson, City of Swan Mayor, said.

"Council has been working hard to get this budget right in recent months and we're confident we've struck the right balance for our growing community."

The rate rise aligns the budget with the priorities in our Strategic Community Plan 2021-2031 (SCP) and Council's direction not to close facilities or cut services.

The SCP is the City's key strategic document, capturing the community's priorities for the next 10 years and breaking them down into five key result areas – Natural Environment, Economic, Social, Built Environment and Governance.

Our annual budget is the economic tool that allocates resources to put our SCP onto action.

"As Council Members, we set the City's strategic



direction, and that's a role we take very seriously," Mayor Richardson said.

"We spend a lot of time reviewing and refining these plans because it's critical to have an effective planning process, especially for a local government like ours which is growing rapidly."

The 2024/25 budget includes one of the biggest capital works programs in WA, featuring major infrastructure projects such as Swan Active Ellenbrook, the extension of Henley Brook Avenue and the construction of Ballajura Intergenerational Playspace.

Highlights from our \$155.5m capital works program:

- **\$33.6m** to improve our road network through road construction, upgrades, safety and parking projects
- **\$7.7m** to get kids playing outdoors with playspace construction and improvements
- **\$5.5m** to give local community groups a place to call home by building the Ellenbrook Community Hub

- **\$3m** to preserve our heritage with works on buildings such as the Midland Junction Arts Centre
- **\$2.8m** to boost sustainability by introducing a new three-bin FOGO system
- **\$2.4m** to improve access and safety on cycleways, footpaths and shared paths
- **\$2m** to continue the revitalisation of Midland with stage one construction of Trackside Entrance and Grandstand Way in the New Junction precinct
- **\$1.6m** to make Swan greener, including planting more than 1,200 street trees in line with the City's Urban Forest Plan
- **\$900,000** to increase female participation in sport with changeroom upgrades in Beechboro and Ballajura
- **\$100,000** to boost safety with the introduction of more mobile CCTV towers
- **\$30,000** to increase accessibility by installing universal access ramps and pedestrian crossings in Ballajura



www.swan.wa.gov.au/annual-budget-2024-25

Epic playspace shaping up in Ballajura

Whiteman Ward

Construction is well underway on the Ballajura Intergenerational Playspace.

The \$6.5 million all-abilities facility will be a new home of fun for all ages in the Ballajura and wider Swan community.

This project, which received a \$2 million grant from Lotterywest, has been one of our advocacy priorities and a highly anticipated project for the Ballajura community.

The playspace will have three distinct zones.

One will be a lawn area with BBQs, seating areas, an outdoor gym, a flying fox and a multi-swing set.

The second section will be an industrial play area, featuring a ninja assault course, basket swings, slides and trampolines.

This second section will also be a junior play area, suitable for the youngest members of our community.

The third section will be a nature play area with a dry creek, rope net, stilts, balance logs, cubby building and balance ropes.

Construction is expected to finish in early 2025.

Tanya Richardson, City of Swan Mayor, said she was excited to see ground broken on the project at a sod-turning event in June.

“The Ballajura intergenerational playspace helps us build an environment that meets the needs of children, youth, families and aged people,” she said.

“It also helps us achieve a key priority for Ballajura residents, as outlined in the Ballajura Local Area Plan, to provide amenities and infrastructure for public open space.

“I’m looking forward to welcoming the community to this incredible facility once it is completed.”



www.swan.wa.gov.au/ballajura-playspace



Entwined in the Swan Valley is just around the corner

City of Swan

Attracting visitors and locals alike, it's almost time to roll out the welcome mat for another edition of Entwined in the Swan Valley.

Every spring, as the days grow longer and the promise of the new wine vintage is in the air, our growers and creators open their doors to welcome visitors to their unique and delicious experiences.

This year, Entwined in the Swan Valley has been extended thanks to popular demand and community feedback.

It will run for almost a month from October 4-28.

From hands-on masterclasses to long, lazy lunches, there's something for everyone.

Tanya Richardson, City of Swan Mayor, said she was looking forward to visiting Swan Valley businesses and support local for Entwined.

“Each year our Entwined in the Swan Valley campaign draws in more and more people from across Perth and beyond,” she said.

“Not only is it a great opportunity to showcase the Swan Valley, but it also helps our local farmers, growers and artisans by encouraging the community to shop local.

“We’re proud to offer an extended event this season with the campaign running for nearly a month – making it easier to attend multiple events and sample the best of the valley.”

Many Swan Valley businesses have signed up to put on special events and experiences for Entwined throughout October.

So, get ready to sip and savour the fruits of their labour as they showcase the best the region has to offer.



www.swanvalley.com.au/entwined

Our calendar competition is closing soon. Get amongst it!

City of Swan

Calling all shutterbugs – from the seasoned snappers of Swan to anyone with a phone and a flair for photography.

This is your golden opportunity to capture the essence of the City of Swan on camera, get your photography featured in the highly anticipated 2025 Community Calendar and win a \$400 gift voucher.

They say a picture is worth a thousand words.

For this year's calendar, the City wants to tell the story of Swan through your eyes – or more specifically, your lens.

The theme for 2025 is **“Get Amongst It,”** focusing on the vibrancy, energy and diversity of life in Perth's biggest local government area.

The calendar will showcase the beauty of the environment and the spirit of the community, with images of people getting amongst it across Swan.

Tanya Richardson, City of Swan Mayor, said it was a rare opportunity for anyone with a creative streak to get their photography in homes across the City.

“If you are passionate about our stunning landscapes or the everyday moments that make Swan special to you,

I encourage you to snap and submit,” she said.

“It might be an image of your children laughing at a park, athletes in action at a local sports event or the warmth of community connections at the markets – it's all part of our story.”

Entries are open until September 29, 2024.

For terms and conditions, FAQs and to submit a photo, see our website.



www.swan.wa.gov.au/2025-calendar-comp



How safe is your place?

City of Swan

This is a great time to take stock of your home security measures to make sure you are keeping yourself and your family as safe as possible.

Using devices such as CCTV cameras, getting to know your neighbours and staying connected to your community are great ways to help you feel safer.

Sneak theft – where burglars sneak into easy-target homes and steal keys, often while homeowners are there – is a common crime that can be easily prevented with these measures.

You can visit the Neighbourhood Watch website to assess your security measures and learn new crime prevention strategies.



www.cityofswan.social/home-security

Get bushfire ready

City of Swan

Swan will enter the restricted burning period in October.

This means you cannot burn without a permit unless you meet strict requirements in certain cases.

Leading into summer, all property owners have a legal responsibility to conduct fire hazard reduction works such as maintaining an asset protection zone and keeping grass height below 10cm.

The Department of Fire and Emergency Services recently released the first Firewise Gardening in WA guide, which you can find on the DFES website.

The City has a Fire Hazard Inspection Officer, who can help you develop a plan to manage your fire risk. Visit our website to book an inspection.



www.swan.wa.gov.au/bushfire

Sculptors to draw inspiration from a 'trip to the tip'

City of Swan

A unique sculpture competition inspired by the resilience of the Perth Hills community has returned for 2024, with entries now open in the Australian Rustic Farm Art Awards.

The awards, presented at the Gidgegannup Agricultural Show in October, are a partnership between the Gidgegannup Agricultural Society and the City of Swan.

They were established in 2022 to give residents a creative outlet in the wake of the Wooroloo bushfire that destroyed 86 homes.

The theme of that inaugural competition was "Out of the Ashes", and the overall winning entry belonged to Heather Barrett, pictured, who made a sculpture of a horse from the ashes or her home.

Last year's Australian Rustic Farm Art Awards (ARFAA) attracted even more entries.

The overall winner was Scott McDonald for his farmer's "throne" and side table, made from old garden tools, natural wood and other bits and pieces.

Ms McDonald's quirky tribute to the resourcefulness and sustainability of rural Australians was a hit with the judges.

Entries for this year's awards close on Sunday, September 29, with finalists to be notified on Friday, October 4.

As usual, the sculpture genre is farm art or junk art – artwork made from recycled scrap

metal, broken-up machinery, timber and other materials you might find on a farm.

This year's theme, "Trip to the Tip", asks entrants to reflect the character of rural life in Australia in an imaginative way.

Judging will be held during the exhibition at the Gidgegannup Agricultural Show on Saturday, October 26.

At least four prizes will be presented, with categories for adults, youth, children and a local artist award.



www.cityofswan.social/art-awards



How we can help you make Swan a better place

City of Swan

Do you have a community-focused idea that you think would interest others in your area?

Our Swan Proactive Grants encourage the delivery of innovative community-led projects, activities and initiatives targeting community-identified strategic focus areas.

We want to give financial support to ideas that can enhance the lives of residents, visitors, and the wider Swan community.

We are particularly interested in reducing homelessness and enhancing community wellbeing, safety and environmental sustainability.

Proactive grant opportunities offer up to \$25,000 in funding, with the understanding that capital items are included through contributions under this stream.

Funding rounds close quarterly at the end of January, April, July and October.

Please plan and submit your application in ahead of project starting.

If you are interested in applying, visit www.cityofswan.social/proactive-grants, email communitygrants@swan.wa.gov.au or call (08) 9207 8693.

Our Swan Community Grants team will be happy to help you with feedback, information or advice to make sure you put forward your very best submission possible.



www.swan.wa.gov.au/grants



Tarmac West

📍 Whiteman, Malaga, Ellenbrook, Bullsbrook

📅 September 12-15

🌐 www.tarmacevents.com.au/our-events/tarmac-west

Strap yourselves in because Tarmac Events WA is gearing up to celebrate its 20th anniversary with a running of the four-day Tarmac West rally.

The racing will be coming to Whiteman Park and Ellenbrook on Thursday, Bullsbrook on Saturday and Malaga on Sunday.



Introduction to birdwatching

📍 Ballajura Public Library, Community Mews, Ballajura

📅 10.30am-12noon, Friday, September 27

🌐 www.swan.wa.gov.au/explore-and-do/events/introduction-to-bird-watching

Whether you passionate about wildlife or simply curious about the birds in your backyard, join Brendan from Bird Life Australia for a session on birdwatching.

Brendan will teach you the basics of bird identification and how to recognise the species you are most likely to see and those that are not as common.



Animal tracking bushwalk

📍 Meet at Whiteman Park lookout, via Beechboro Road North entry

📅 9-11am, Sunday, September 29

🌐 www.swan.wa.gov.au/explore-and-do/events/animal-tracking-and-signs-bushwalk

Join Mike Cook from Bushcraft WA on this free interactive guided bushwalk.

Learn about Whiteman Park's diverse animal life through the tracks and signs they leave behind.

Find how to identify the tracks of different animals and interpret what they were doing and how they were moving.



entwined

IN THE SWAN VALLEY

OCTOBER 2024

Experience Swan Valley's finest this spring with masterclasses, high teas, long lunches, and dinners from top artisans and chefs.

entwinedinthevalley.com.au

SWAN VALLEY | City of Swan

Your Councillors

Cr Dave Knight

0417 962 004

dave.knight@swan.wa.gov.au

Cr Haeden Miles

0451 742 093

haeden.miles@swan.wa.gov.au

City of **Swan**



9267 9267

swan@swan.wa.gov.au

This document can be made available in alternative formats on request.