



Brabham Public Art Trail

Public Art

Expression of Interest - Artist Brief

Closing date 4pm, Friday 7th February 2025



Introduction

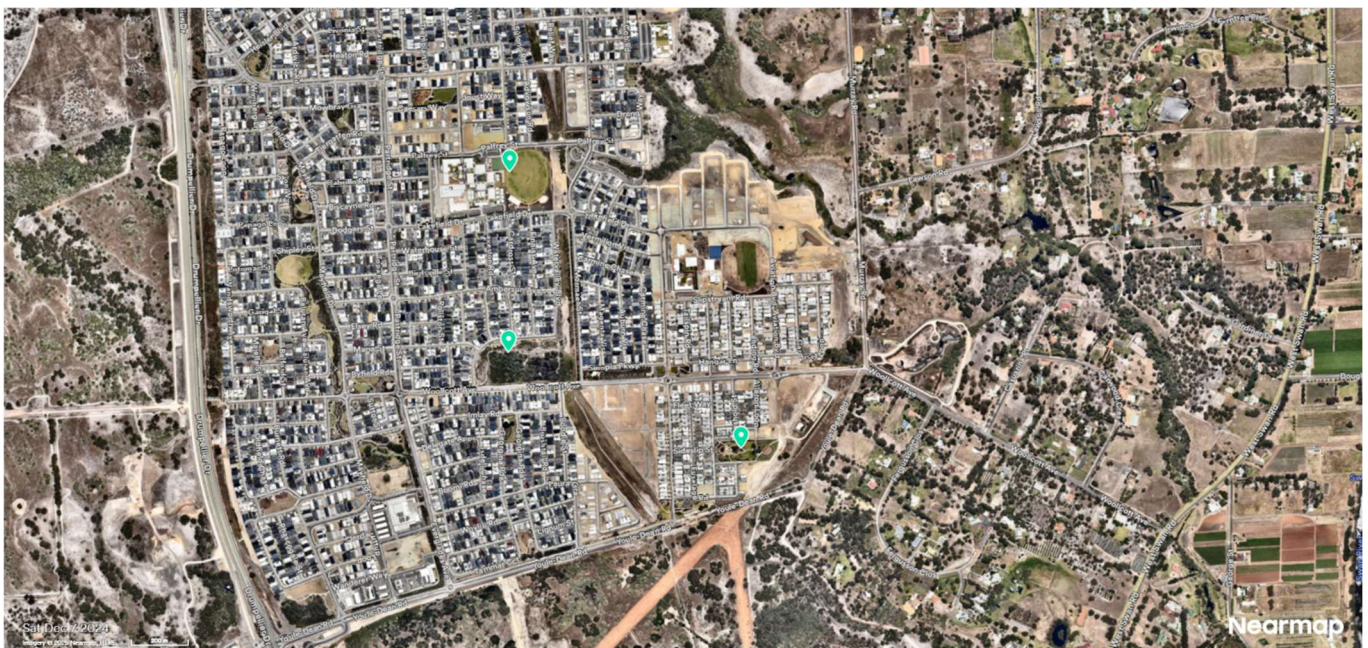
The City of Swan is seeking Expressions of Interest from seeking an experienced artist/fabricator to deliver an artworks that are a sculptural artwork trail to contribute to the public amenity of three (3) locations throughout Brabham.

The purpose of Public Art in the City of Swan is to “add to the visual amenity, promote cultural diversity and celebrate Place” (POL-C-142). A vision of the City’s Strategic Community Plan is to create unique and attractive places, recognizing that public art can strengthen local identity and enrich the visual environment.

Project Location

The proposed Brabham artwork trail pieces will have one sculpture at each location that interconnect with each other in the below three (3) locations:

- Brabham Primary School Oval, Lakefield Drive, Brabham
- Honeycomb Park, Threshold St, Brabham
- Watervalley Boulevard Park, Watervalley Boulevard, Brabham



Scope of works

Brabham forms part of the Swan Urban Growth Corridor (UGC) and is a key population growth area for the City of Swan. The area's population is expected to grow to approximately 36,000 people by 2051.

The City is looking for artwork that intended to foster community spirit and create a sense of place within the relatively new community of Brabham. Equally, the public art works are also intended to instigate a sense of identity, joy and connectivity of the Brabham area by celebrating community themes, creating destinations and making for memorable public spaces. The artworks should support celebrating the cultural identity of Brabham’s diverse residential population.

The artist / fabricator will work with the City of Swan’s Project Manager in the development and final siting of the art form/s.

The following themes were identified during Community Consultation, these narratives may be captured or displayed within the proposed artworks;

- Art that serves a dual purpose (seating, shade, play equipment).
- Promote a sense of unity and inclusivity among residents.
- Demonstrate themes related to environmental conservation, sustainability, or the natural world.
- Honor and reflect the history, traditions, and contemporary experiences of the all multicultural people.

The artwork may also take the form of interactive play equipment which encourages active engagement, exploration and inspires imagination. It must also be accessible and flexible in design, be visually intriguing and physically stimulating. Artists must consider functionality, safety and how the artworks will endure in this busy play setting.

If placement is within a Playground, the artwork's construction must meet the Australian Standards for Playgrounds, AS 4685.1 2014. Engineering and structural certification of the artwork and its footings are to be included in the delivery and cost of the art form. Kidsafe WA has a useful website:

<http://www.kidsafewa.com.au>

The City does not locate public art within roundabouts due to safety concerns.

For safety and durability, the artwork must be made of durable materials, capable of being touched and handled by people. The required treatment of timber for white ants and longevity may preclude its use unless it can be demonstrated that the timber is safely treated with a 15-25 year lifespan. All other materials will be considered.

Engineering and structural certification of the artwork and its footings including fabrication are to be included in the delivery and cost of the art form. The engagement, coordination and remuneration of the engineer must be done by the artist.

Depending on the form of the artwork, a building permit may be required. Structures that are taller than 2.4 metres in height and are bigger than 10 square metres in area will require a building permit. If a building permit is required, the City will apply for the building permit on behalf of the artist and cover the associated application fees.

If the artwork is to include endemic planting, appropriate consultation with a qualified landscape architect should also be undertaken. Chosen species must take considerations on limitations of maintenance and survivability during plant establish period and species to be water wise.

A written maintenance instruction will be required upon completion and installation of the works.

Project Timeframes

Stage 1 - Planning and design of commissioned artwork.

It is expected that the successful respondent will be available to commence work on the project within 10 working days from the Notice of Award; unless an alternative agreement is reached.

Brabham Public Art Trail



Stage one captures the planning and commission of the artwork pieces design and any associated approvals to the final sitting of the artwork/s including obtainment of engineering and structural certification. All design and approvals are to be completed by June 2025.

Any planning or associated building approvals will be the responsibility of the Project Manager and not the artist.

Stage 2 - Implementation and construction of artwork.

Fabrication of the Artwork pieces is to commence in July 2025 and installation of the artwork/s to be completed by December 2025*

*Final dates may be revised through mutual agreement with the Project Team. If the project can be completed earlier than the above indicative timeframe, that would not be an issue.

Project Budget

This project has a lump sum budget of \$100,000 excluding GST for Stage 1 2024/25 and Stage 2 2025/26.

The budget is inclusive of the Artist's design development, meeting attendance, progress reports, site visits, certification, fabrication, installation, and maintenance manual. The engagement, coordination and remuneration of the engineer must be done by the Artist.

The Contract includes all operations and the provision of all necessary materials (unless stated otherwise), labour, plant, equipment, cartage and completion of the artwork.

Any planning or associated building approvals will be paid for by the City of Swan not the Artist.

Stage 1 – 2024/25	DATE
Contract Award	April 2025
Design Development	May 2025
Approval of Final Design of Artwork pieces, by the City's Project Team. Submission of Footing Details, including engineering certification.	June 2025

Stage 2 – 2025/26	DATE
Fabrication of artwork to commence	July 2025
Progress review of artwork prior to final completion.	September 2025
Review and sign off of completed Artwork	October 2025

Installation of artwork on site	November 2025
Submission of Maintenance Manual	December 2025

Detailed Design Submission Requirements

- 1) Scaled drawings of the proposed artwork, including a site plan and detailed drawings that relay scale, intended materials and fabrication methods
- 2) Specification of equipment to be used on site.
- 3) Access and/or security requirements.

Maintenance Manual

The Maintenance Manual must include:

- 1) Project Title.
- 2) Artist's name, address, telephone, email.
- 3) Brief description of the artwork.
- 4) List of major sub-contractors and fabricators and their contact details.
- 5) Description of the materials used and any installed services or equipment and their mode of operation.
- 6) Inspection, testing and maintenance program, detailing the routine required to maintain the artwork throughout its intended lifespan.
- 7) 'As installed' drawings for the artwork and all related equipment and services.

Expression of Interest Artists

For the general Expression of Interest, each artist/artist team is asked to provide evidence of past works relevant to this project, current CV's and a short response to the above brief broadly indicating approach, potential concepts, themes and materials, they would propose for the artwork.

EOI's will be assessed by the panel for:

- 1) Quality of previous works
- 2) Demonstrated ability to complete works with time, budget and quality
- 3) Written response to brief indicating approach, potential concepts, themes and materials.

EOI submissions must be **formatted into a single pdf file** and submitted electronically.

Submission materials must include:

- 1) A letter indicating interest and capacity to undertake the project within the timeframe and budget. If a team submission, please indicate a team leader.
- 2) Five images of previous relevant work, both individual and team if applicable. Including list of images including title, location, materials, dimensions, budget
- 3) Current CV's of each of the team member.

- 4) Confirmation that the artist/artist team is able to meet the schedule provided.
- 5) Brief indicating approach, potential concepts, themes and materials proposed for the artwork.

From these submissions, three (3) artists/artist teams will be shortlisted. The shortlisted artist will be paid \$1,200 (ex GST) to complete a more detailed design proposal.

Please make these submissions as a **single pdf**.

The submissions will be assessed for:

- 1) Suitability for siting within the chosen artwork locations with safety being priority.
- 2) Acknowledgement of key themes identified under 'Scope of work'
- 3) Ability to engage public audience.
- 4) Maintenance and longevity issues.

The City reserves the right to reject all or any tenders submitted.

Shortlisted Artists

The short-listed artists/artist teams will be invited to make a submission via an RFQ process. Shortlisted artists will be paid \$1,200 to complete a detailed design proposal and quote specific to the project site.

The RFQ will outline the submission materials as well as the assessment criteria. These are likely to include:

- 1) Detailed concepts and ideas for the artwork
- 2) List of any queries, concerns and considerations.
- 3) Schedule of works to fit within the project schedule.
- 4) One electronic submission, as a single PDF.

Conditions of Contract

The Contract is subject to the following Conditions of Contract:

City of Swan General Conditions of Contract for the supply of Artwork which are available on the City of Swan Website;

<https://www.swan.wa.gov.au/awcontent/Web/Documents/Local-Laws-Policies/city-of-swan-general-conditions-of-contract-for-the-supply-of-artwork.pdf>

Expression of Interest Submission deadline

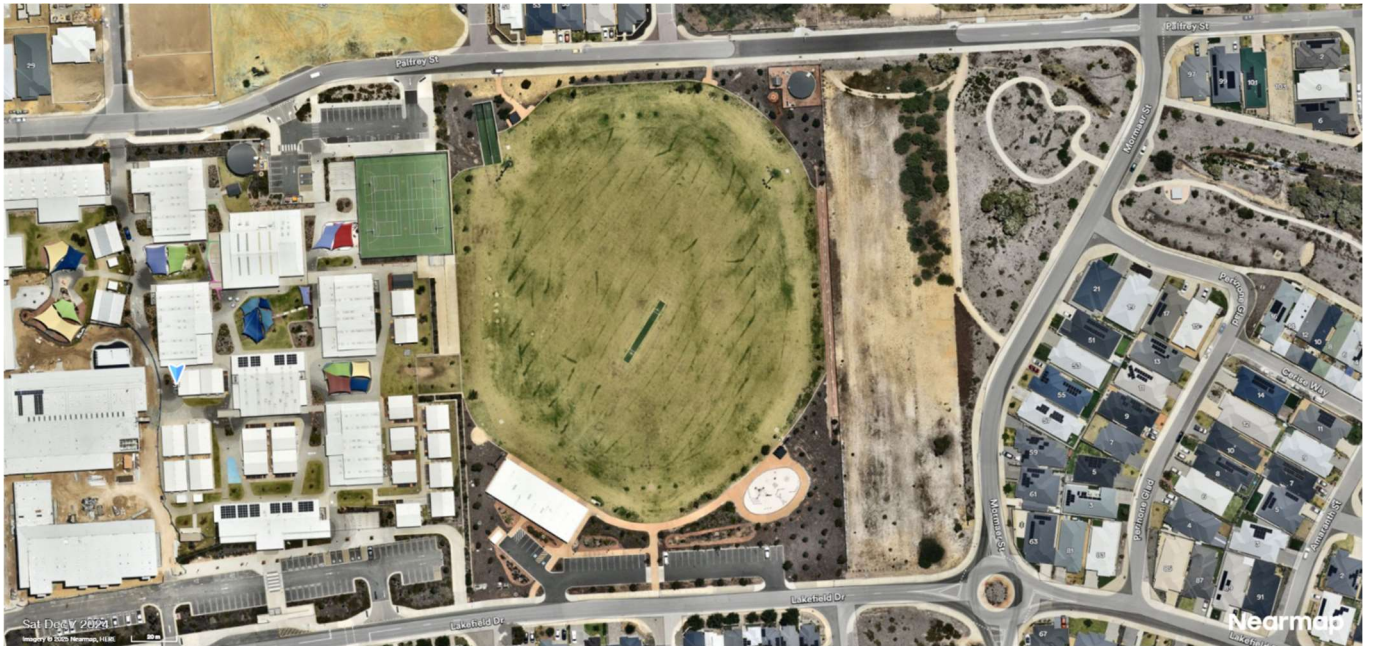
4pm, Friday 7th February 2025

Please email submissions to Kayla McNicol, Senior Project Manager, kayla.mcnicol@swan.wa.gov.au

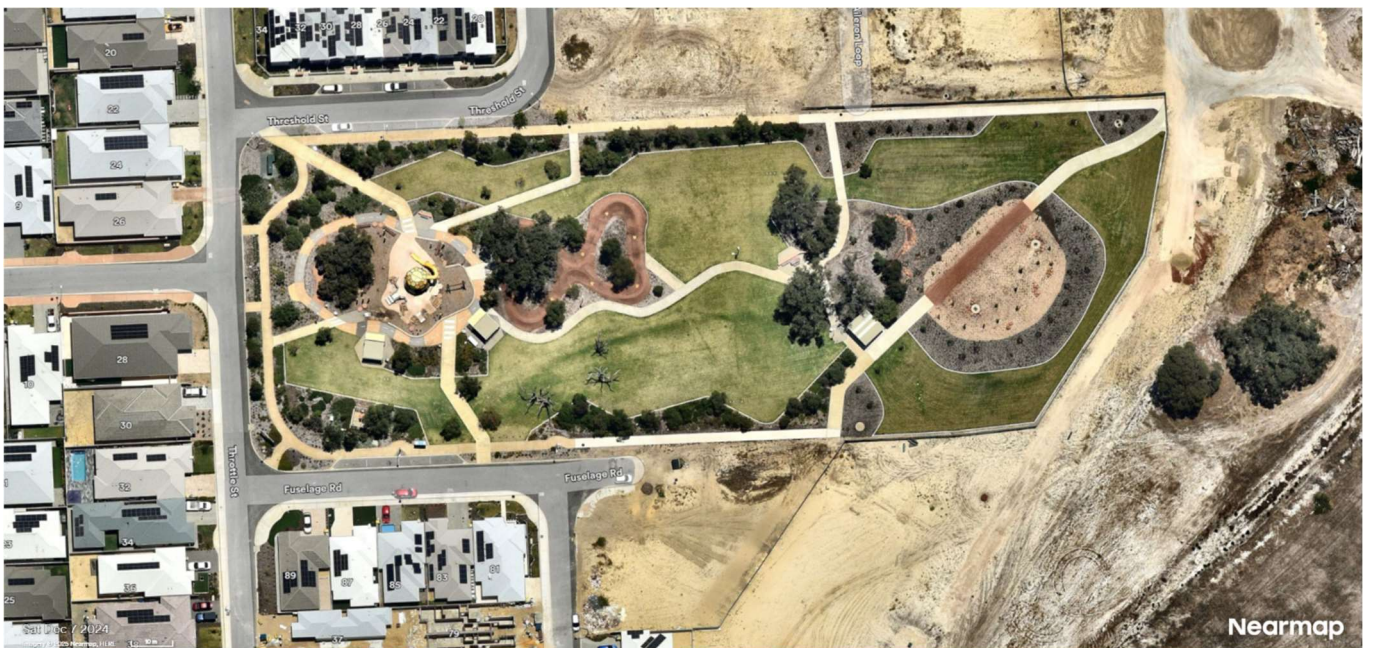
Brabham Public Art Trail

Appendix 1 – Park Locations

Brabham Primary School Oval

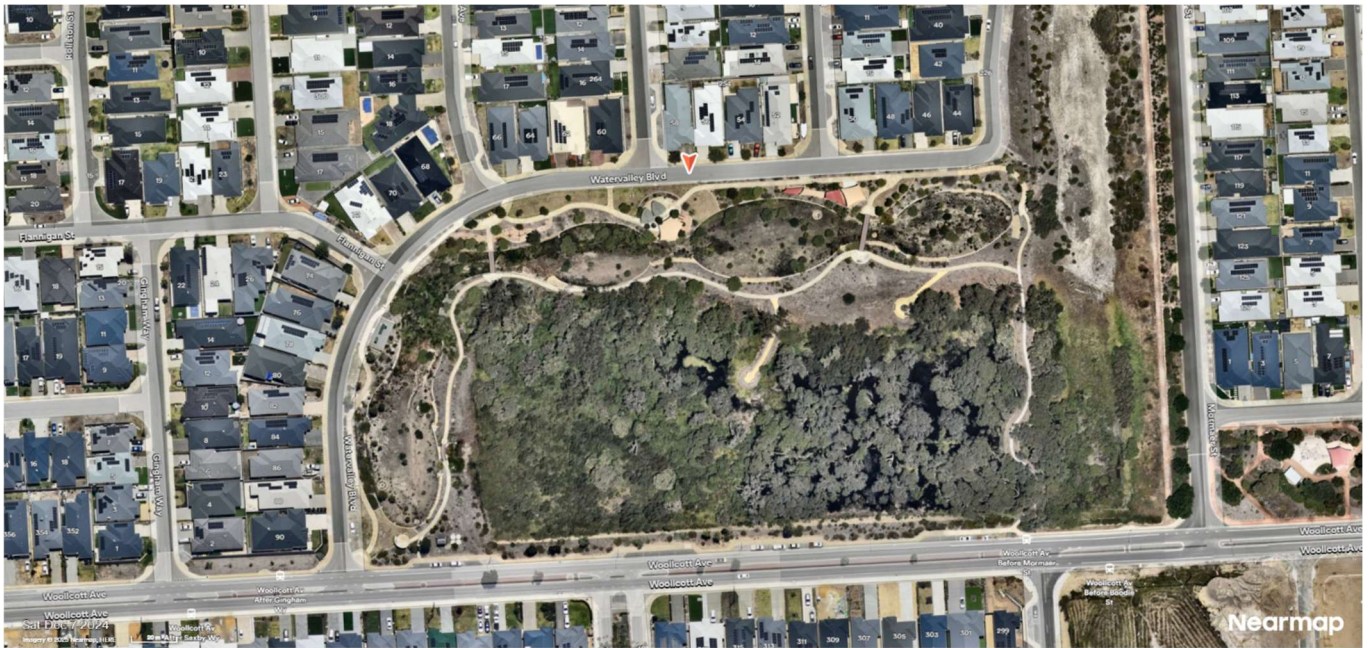


Honeycomb Park






Brabham Public Art Trail

WATERVALLEY BOULEVARD PARK





Enquiries (08) 9267 9267
2 Midland Square, Midland
PO Box 196, Midland DC WA 6936

cityofswan 
cityofswanwa 
cityofswan 

www.swan.wa.gov.au

Contact details:

Kayla McNicol

Senior Project Manager - Major Projects

08 9267 9320

Kayla.mcnicol@swan.wa.gov.au

