

Connecting to the City of Swans Stormwater System

Properties with the stormwater disposal method of **council connection with silt pit** are required to connect into the City's road drainage system. This connection point must be at the location of a drainage pit. Locations of pits suitable for connection into can be found on the City's Intramaps site.

A series of pits are required to be built on the private property before overflow into the City's system occurs. Properties are required to store a total of 15mm of water per square meter of impervious area prior to discharge into the road drainage system. The volume of water **V** required to be stored can be calculated as follows:

$V = 0.0122A_i$ (for R25 or lower density coding)
(5 year 10 minute storm)

$V = 0.0159A_i$ (for commercial/industrial/R30 or higher density coding)
(1 year 60 minute storm which is roughly equivalent to the 10 year 12 minute storm)

Where V = Volume of soakwell required in cubic metres

A_i = Impervious area (roof, pavement, etc) in square metres

Impervious area is to be considered any area where rainwater will not penetrate and runoff will be generated. This includes all roof, brick paving, concrete and asphalt areas.

The pit before connection into the City's drainage system must be a silt pit. This City's standards for this pit can be found on the following page. Connections sizes for developments are listed below:

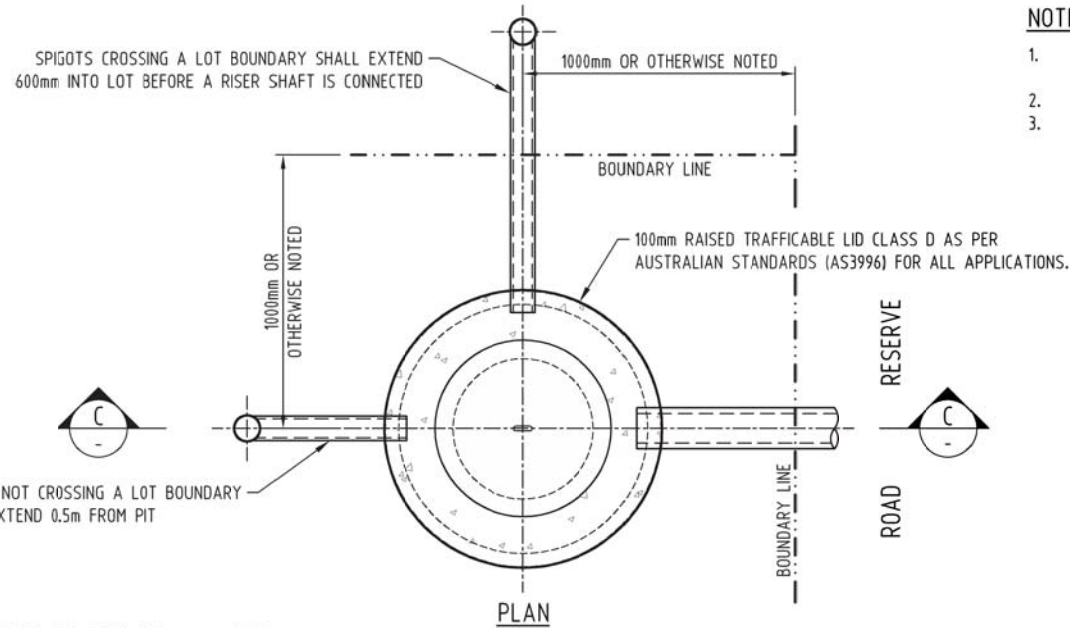
- Single residential dwelling 90mm
- Grouped residential (high density) dwelling 150mm
- Commercial 150mm

If no pit can be located on the Intramaps system please contact The City of Swan on 9267 9267 and ask for assistance in connecting to the City's stormwater system.

Typical details for lot connection pits are attached.



STORMWATER STICKER



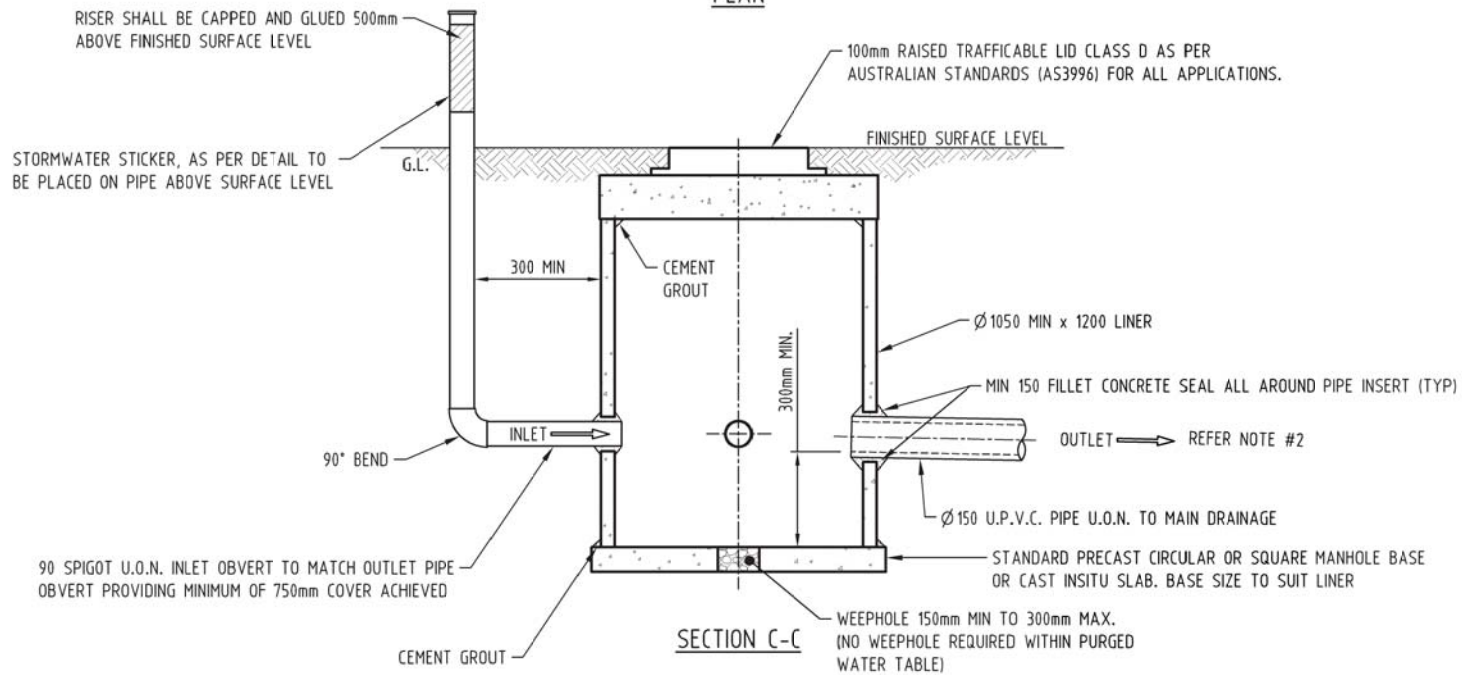
NOTE:

1. Ø150 SPIGOTS SHALL BE PROVIDED FOR LOTS GREATER THAN 1500sqm OR FOR GROUP HOUSING LOTS.
2. REFER TO STD 59-1s FOR MAINLINE DRAINAGE CONNECTION (RCP).
3. TYPE 8 WATER CORP CHAMBER MAY BE USED FOR INDIVIDUAL LOT CONNECTIONS IN LIEU OF CONCRETE MANHOLE. REFER TO STD 61A.

SPIGOTS NOT CROSSING A LOT BOUNDARY SHALL EXTEND 0.5m FROM PIT

CONCRETE LINER NOTE:

PIPE SIZE	LINER SIZE
225 - 450	1050
525 - 675	1200
750	1500



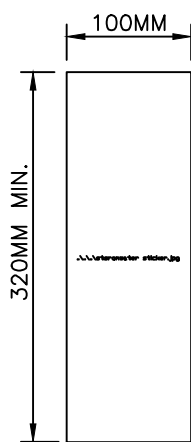
SMARTSTREAM COMPONENTS

ITEM	DESCRIPTION	MATERIAL
A	VERTICAL RISER CAP	PVC
B	ACCESS COVER CLASS 'B' AND 'D'	VARIOUS
C	RISER SHAFT - DN 225 ϕ	PVC
D	LOT CONNECTION PIT BODY	MDPE (POLYETHYLENE)
E	600/750/900 150 PRO GROMMET	EPDM
F	315/450/525 100 PRO GROMMET	EPDM

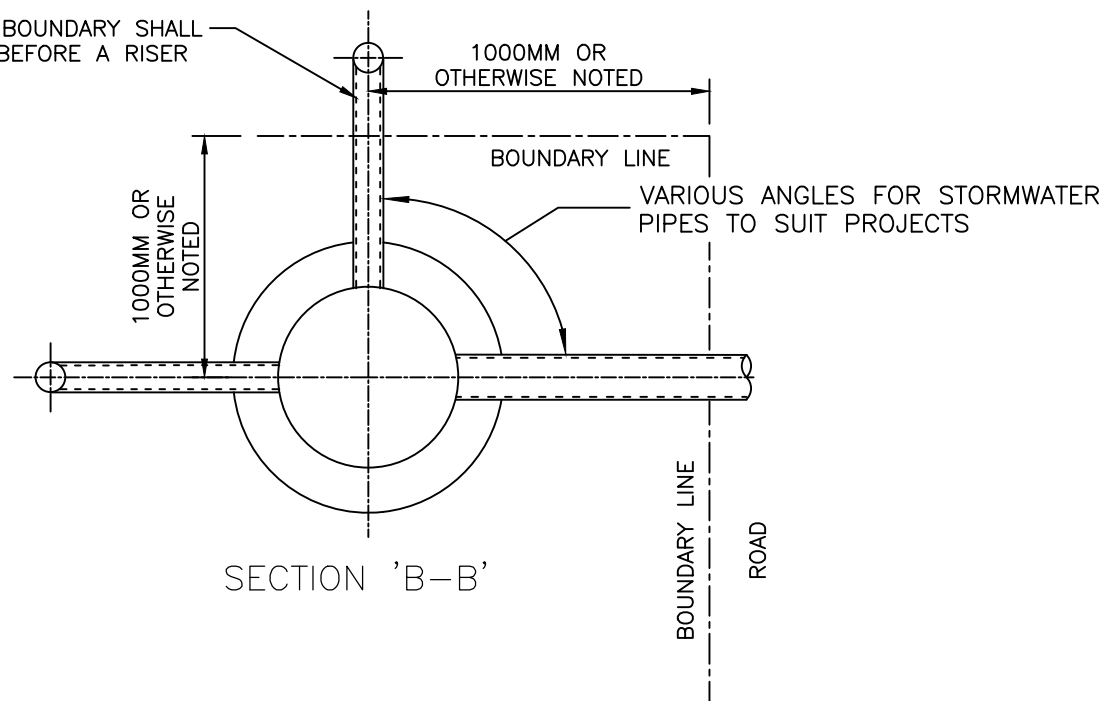
GENERAL NOTES

1. ALL DIMENSIONS IN MM
2. BACKFILL AND COMPACTION IN ACCORDANCE WITH LOCAL AUTHORITY STANDARDS FOR STORMWATER INFRASTRUCTURE
3. CONTRACTOR TO SUPPLY ALL DN100 PVC PIPE AND JOINTS.
4. CLEARANCE BETWEEN THE VERTICAL RISER CAP AND THE UNDERNEATH OF THE COVER SHOULD BE 150MM
5. PVC LINES, VERTICAL RISER PIPE, AND JUNCTIONS ARE TO BE CONNECTED TO THE STORMWATER JUNCTION USING STANDARD PVC GLUE JOINT
6. ϕ 150 SPIGOTS SHALL BE PROVIDED FOR LOTS GREATER THAN 1500SQM OR FOR GROUP HOUSING LOTS
7. TYPE 8 WATER CORP SEWER CHAMBER MAY BE USED FOR INDIVIDUAL LOT CONNECTIONS IN LIEU OF CONCRETE MANHOLE. REFER TO STD 61A

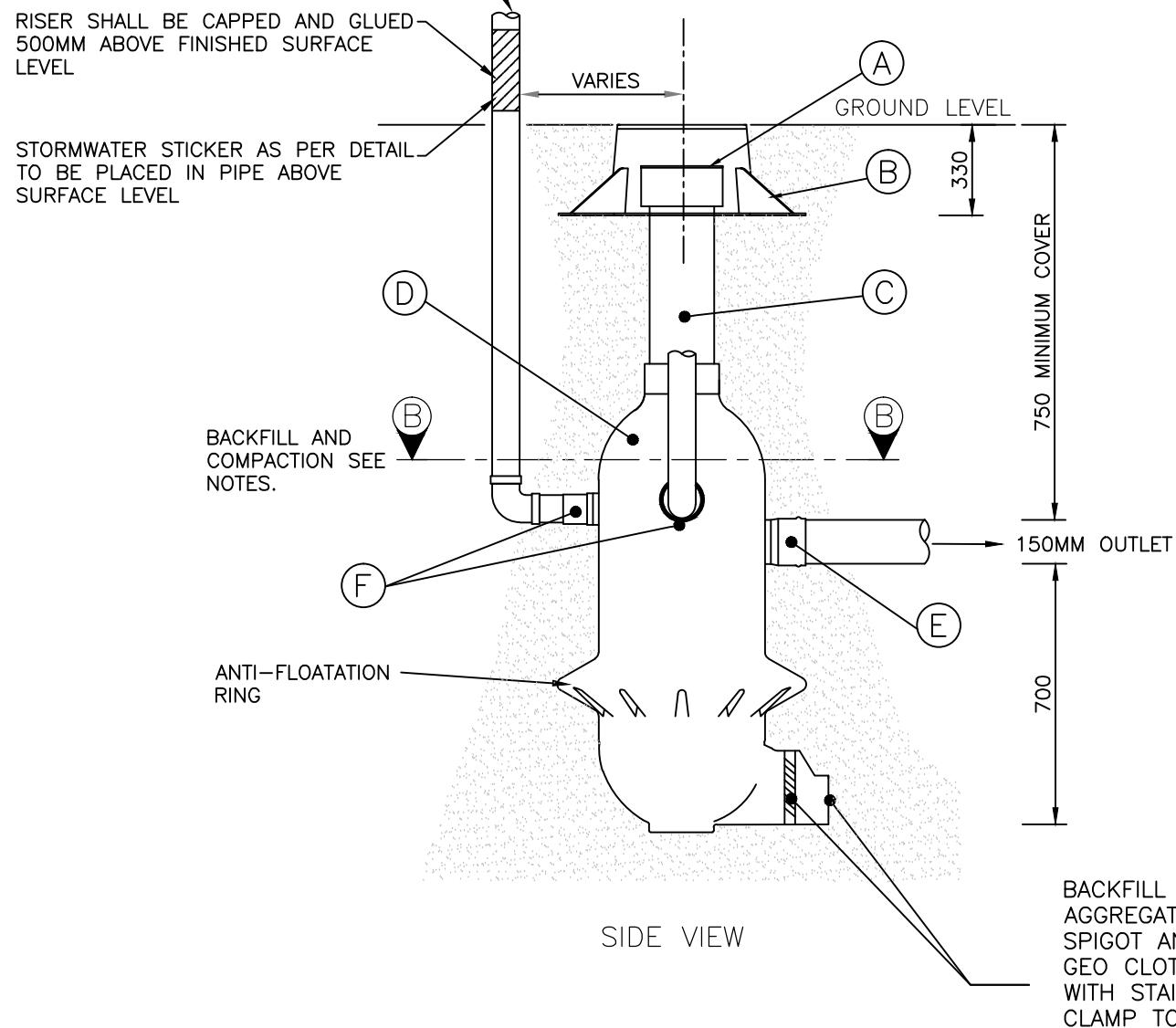
SPIGOTS CROSSING A LOT BOUNDARY SHALL EXTEND 600MM INTO LOT BEFORE A RISER SHAFT IS CONNECTED



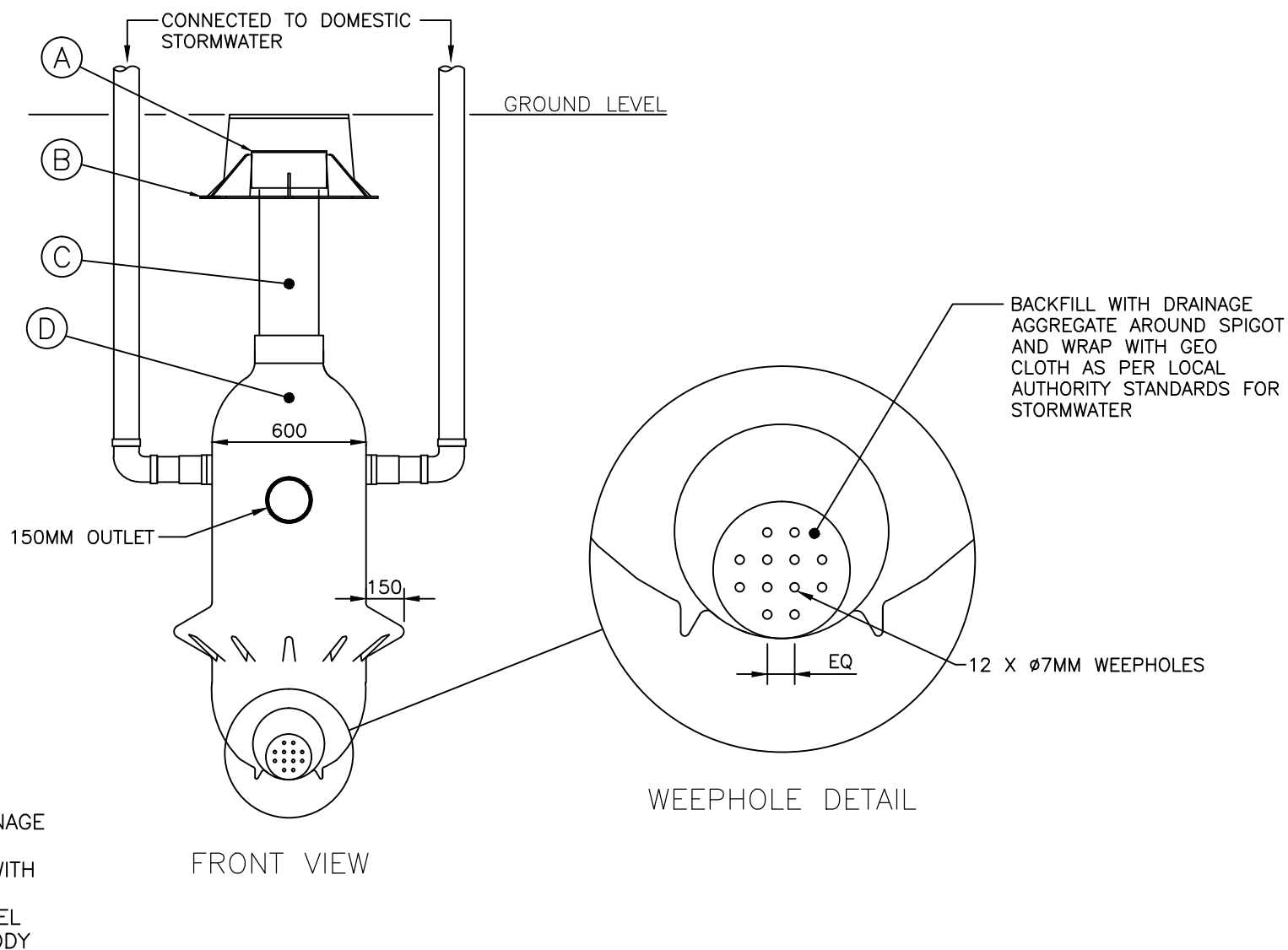
STORMWATER STICKER



SECTION 'B-B'



SIDE VIEW



FRONT VIEW

WEEPHOLE DETAIL

BACKFILL WITH DRAINAGE AGGREGATE AROUND SPIGOT AND WRAP WITH GEO CLOTH AND FIX WITH STAINLESS STEEL CLAMP TO SHAFT BODY

© COPYRIGHT
THIS DOCUMENT IS AND SHALL REMAIN THE PROPERTY OF THE CITY OF SWAN. THE DOCUMENT MAY BE USED FOR THE PURPOSE FOR WHICH IT WAS COMMISSIONED AND IN ACCORDANCE WITH THE TERMS OF ENGAGEMENT FOR THE COMMISSION AS AGREED WITH THE CITY OF SWAN. UNAUTHORISED USE OF THIS DOCUMENT IN ANY WAY IS PROHIBITED.

APPROVED
[Signature]
DESIGN CO-ORDINATOR
DATE: 17.06.2021
DRAWN: AB CHECKED: YW

SCALE: NTS (A3)
0.1 0.2 0.3 0.4 0.5 0.6 0.7 0.8 0.9

STORMWATER LOT CONNECTION
RESIDENTIAL - MODIFIED TYPE 8 WATER CORP DETAIL

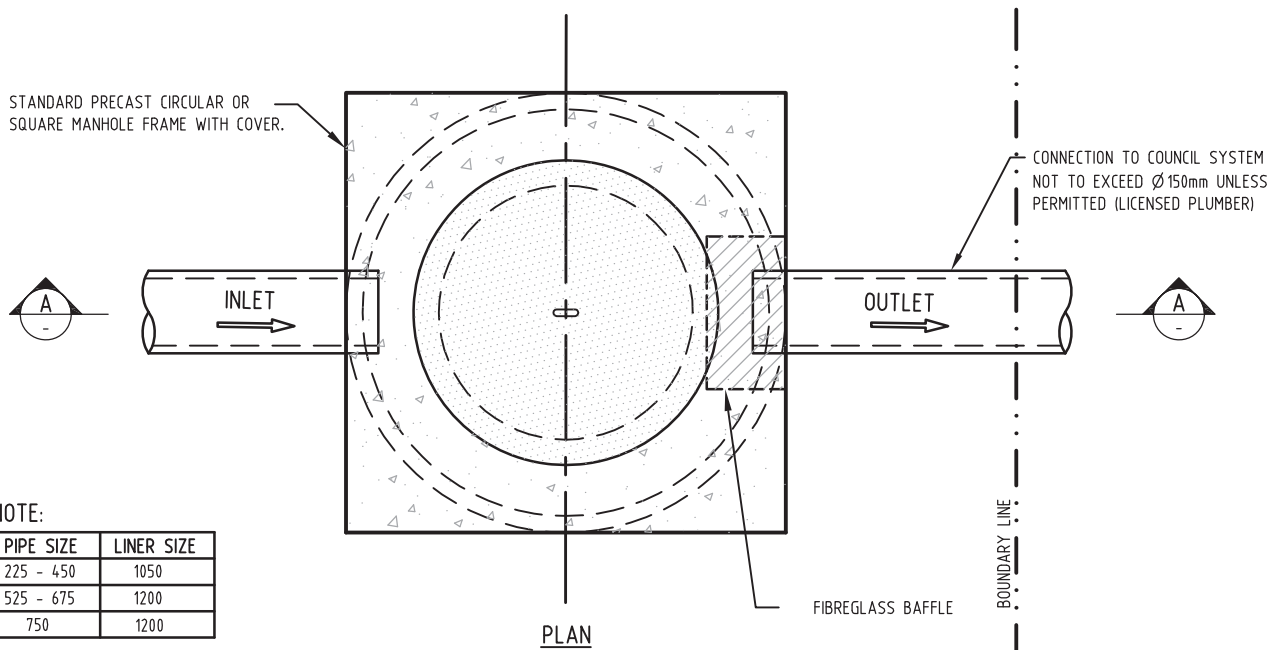


OPERATIONS

DRAWING No:
STD 61

REV No:
0

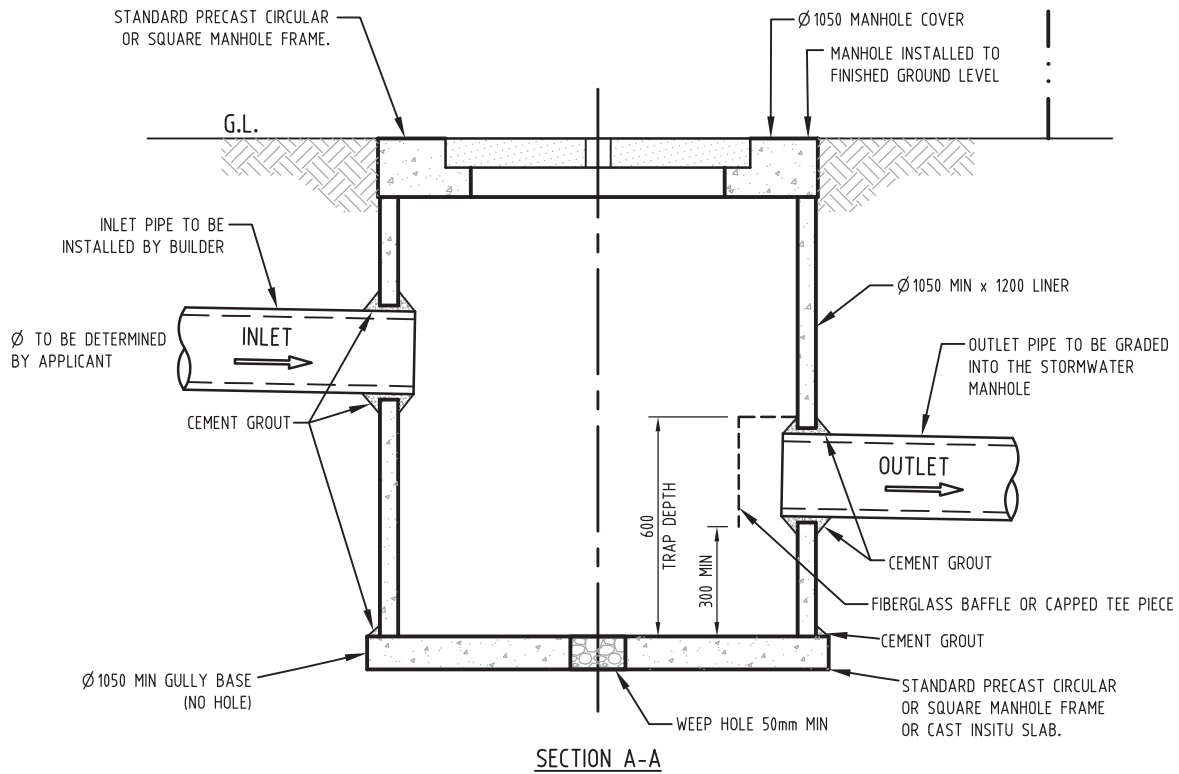
STANDARD PRECAST CIRCULAR OR SQUARE MANHOLE FRAME WITH COVER.



NOTE:

PIPE SIZE	LINER SIZE
225 - 450	1050
525 - 675	1200
750	1200

PLAN



SECTION A-A

STORMWATER CONNECTION PIT
COMMERCIAL & INDUSTRIAL STANDARD DRAWING



DRAWING No:
STD 25-2

REV No:
0

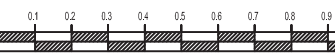
© COPYRIGHT
THIS DOCUMENT IS AND SHALL REMAIN THE PROPERTY OF THE CITY OF SWAN. THE DOCUMENT MAY BE USED FOR THE PURPOSE FOR WHICH IT WAS COMMISSIONED AND IN ACCORDANCE WITH THE TERMS OF ENGAGEMENT FROM THE COMMISSION AS AGREED WITH THE CITY OF SWAN. UNAUTHORISED USE OF THIS DOCUMENT IN ANY WAY IS PROHIBITED.

APPROVED

DESIGN CO-ORDINATOR DATE
21.12.2016

DRAWN: IM CHECKED: CT

SCALE: 1:50 (A4)



OPERATIONS