

# Corporate Business Plan 2023/24 – 2026/27

## Plan on a Page

The City of Swan Corporate Business Plan (CBP) 2023/24-2026/27 translates the aspirations and objectives of the Strategic Community Plan (SCP) into operational priorities. It outlines our services and projects, details how we deliver them and the costs associated over the four-year period. The CBP is developed within the City's financial, workforce and asset management capability, and in turn informs resourcing across those areas.

### How we Plan

The City's SCP sets out our Council and community's vision, aspirations and strategic objectives over a 10-year period. The vision detailed below guides our future direction and is underpinned by five key result areas. Each key result area has outcomes, objectives and measures with targets that outline what we aim to achieve and how we will achieve it.

It is a requirement that local governments prepare an Integrated Planning and Reporting Framework (IPR), the City's IPR is illustrated below to the right. The IPR aims to ensure our Council and community's priorities and aspirations are translated into operational objectives. It details how we will measure, assess and report on performance every year to the community. The measurement and reporting process facilitates continuous improvement of our performance and progress towards our vision and objectives.

### Our Vision

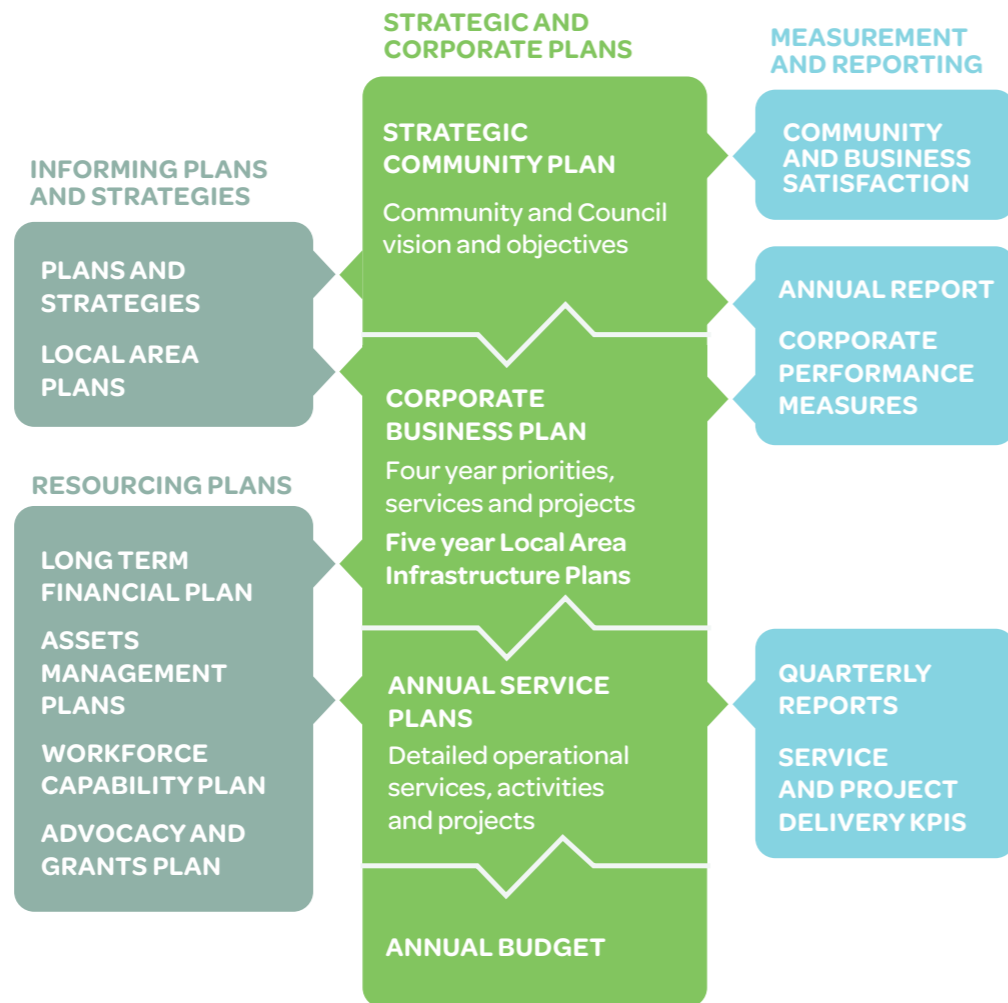
**'One City, diverse people, cultures and places'**

A sustainable, thriving City of diverse people and places enjoying a quality of life, health and wellbeing.

### Key Result Areas



### Our Integrated Planning and Reporting Framework



## Prioritising and Advocating for our Community

### Local Area Planning

Local Area Plans (LAPs) help the City to plan for future growth and the provision of community services and infrastructure across each of our geographically distinct areas. The City of Swan has 14 LAPs that undergo an extensive research and community consultation process to identify priorities for the local area. These priorities inform our operational business planning for the delivery of services and projects to the community.

For more information on our identified priorities and key deliverables for each local area, refer to pages 20-43 in the CBP or on the City's website [www.swan.wa.gov.au/LAP](http://www.swan.wa.gov.au/LAP)



Local area planning involves local community members working together with the City to identify the specific needs of their community.



### Projects in your City

For more detail on how the City is delivering on local area priorities, an interactive map has been developed and is available on the City's website displaying the projects that the City is delivering currently and in the future.

The map can be found here: [www.swan.wa.gov.au/projectsmap](http://www.swan.wa.gov.au/projectsmap)

### Advocacy and Grants Plan

Securing external funding through grants is a vital means for the City to deliver our services. We champion numerous strategically significant priorities to enrich the lifestyle of our residents and ratepayers. These priorities are reviewed regularly to ensure they remain relevant.

For a full list of the advocacy priorities refer to pages 62-63 of the CBP.

## The Plan – Major Projects and Investments

### Major Projects 2023/24 – 2026/27

The City has many major projects planned over the next four years, these projects are important to enable growth, prosperity and livability into the future:

- Ellenbrook Leisure Centre
- Swan Active Midland refurbishment
- Brabham District Community Centre
- Dayton District Open Space
- Ballajura Intergenerational Playspace
- Dulcie Liddelow (Midvale) Netball Centre
- Neighbourhood Park and Community Building – Murray Road
- Neighbourhood Park and Community Building – Youle-Dean Road
- Daviot Road/Benara Road roundabout
- Gnangara Road duplication
- Henley Brook Avenue (Gnangara Road to Park Street)
- Hepburn Avenue/Marangaroo Drive roundabout
- Marshall Road and Beechboro Road roundabout
- Shady Hills Second Access Road - Construction
- Website upgrade.



## Major Government Investments – What’s coming?

The City has worked closely with the State and Federal Governments for many years to advocate for the below major investments and aligning key infrastructure projects and upgrades, ensuring timely and fit for purpose linkages to the new and upgraded infrastructure wherever possible:

- Morley-Ellenbrook Line
- New Midland Station
- East Link.

For more information on the major government investments, refer to page 47 of the CBP.

## How we will deliver on our Key Result Areas



**Natural Environment**  
Sustainable, green and peaceful

### Services

- Emergency Management
- Natural Area Management
- Park and Reserve Maintenance
- Recycling and Recycling Centres
- Sustainable Environment
- Waste Collection Services
- Waste Education

### Key informing strategies and plans

- Sustainable Environment Strategy
- Urban Forest Plan
- Local Biodiversity Plan
- Emissions Reduction Action Plan
- Water Efficiency Action Plan

### 2023/24 Key projects

- Biodiversity Plan Review
- Tree Planting Program
- Food Organics Garden Organics (FOGO)
- Waste to Energy
- Bulk Verge Collection System



**Economic**  
Thriving and vibrant

### Services

- Business Support and Development
- Economic Development
- Property and Investment
- Tourism Services

### Key informing strategies and plans

- Economic Development Strategy
- New Business Attraction and Opportunities Plan
- Business Support and Enhancement Plan
- Tourism Development Plan

### 2023/24 Key projects

- Business Support and Enhancement Action Projects
- New Junction Planning
- Visitor Centre Website Management



**Social**  
Diverse, engaged and safe

### Services

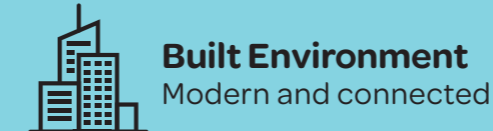
- Community Arts, Culture and Funding Services
- Community Care and Aged Services
- Community Development
- Community Safety
- Leisure Services
- Library Services
- Security Services
- Swan Volunteer Centre and Services
- Youth Development Services

### Key informing strategies and plans

- Social Strategy
- Reconciliation Action Plan (RAP)
- Access and Inclusion Plan (AIP)
- Community Health and Wellbeing Plan
- Youth Plan
- Community Safety Plan

### 2023/24 Key projects

- Swan Active Midland
- Community Safety Plan
- Arts and Culture Plan
- Ellenbrook Youth Centre Operational Plan
- Creative Space Strategy
- Library Infrastructure and Service Review



**Built Environment**  
Modern and connected

### Services

- Asset Planning and Management Services
- Building Approval Services
- Construction and Maintenance
- Design and Project Delivery
- Fleet and Depot
- Planning Approval Services
- Public Health Services
- Strategic Land Use Services

### Key informing strategies and plans

- Local Planning Strategy
- Asset Management Strategy
- Local Planning Scheme

### 2023/24 Key projects

- Draft Local Planning Scheme
- Local Planning Strategy
- Sustainable Growth Model
- Midland Redevelopment
- Local Area Traffic Management Studies
- Maintenance Program Review
- Local Heritage Survey Review



**Governance**  
Progressive and responsible

### Services

- Communications and Engagement
- Customer Experience
- Financial Services and Rates
- Governance
- Human Resources
- Information Systems
- Organisational Planning and Development

### Key informing strategies and plans

- Long Term Financial Plan
- Workforce Capability Plan
- Advocacy Action Program
- Local Area Plans (LAPs)

### 2023/24 Key projects

- Sprout Social
- Website Upgrade
- Feasibility Study for a Live Tracker of Service Requests
- Corporate Performance Reporting Improvements
- Technology Replacement/Renewal Plan for Library Services