

Growing local plants

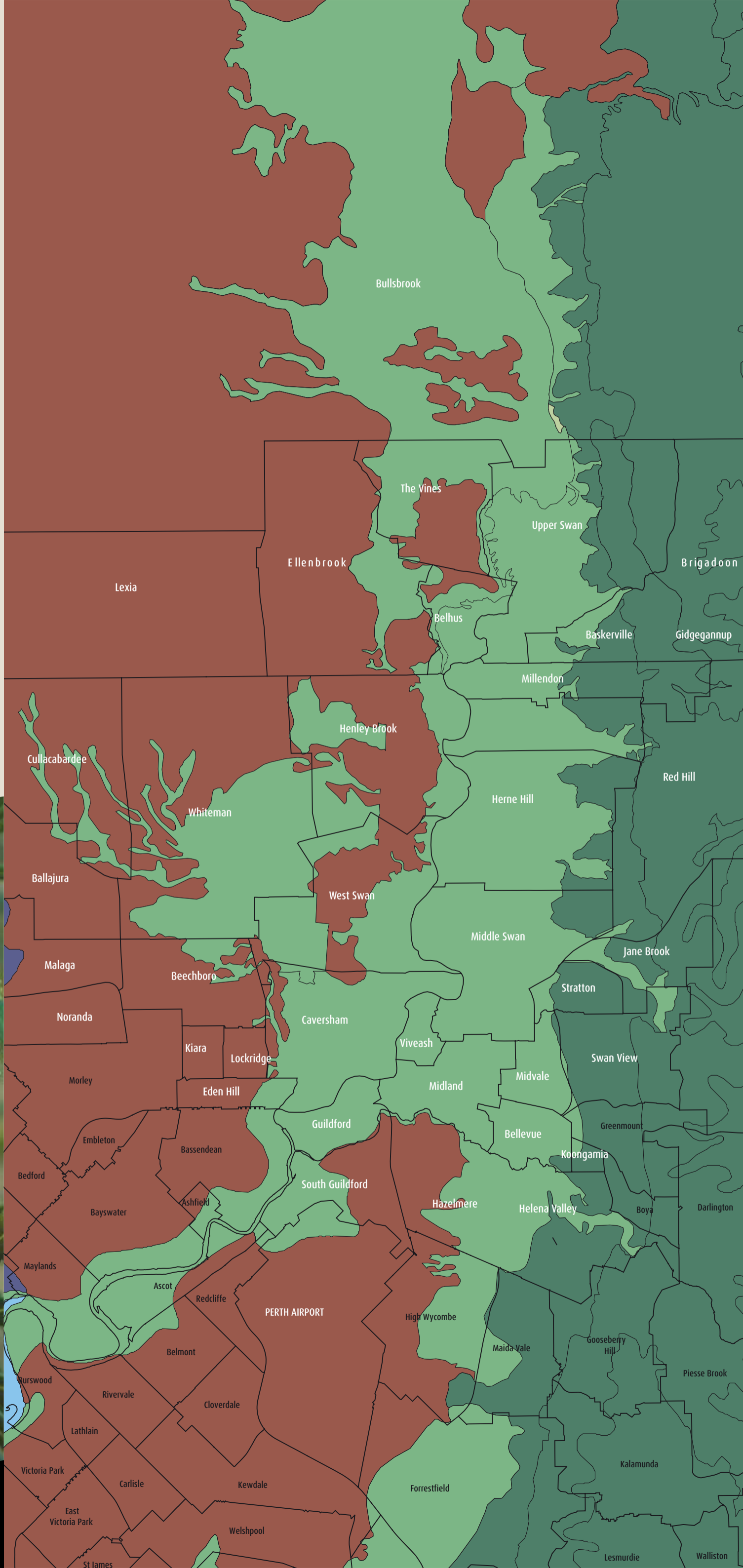
Local plants are species that would naturally occur in your neighborhood and are therefore adapted to the local climate and soil.

There are a huge range of local WA plants that can be used to create many contemporary garden styles such as cottage, formal, Mediterranean and bushland. Be creative with local plants and use them in hanging baskets and containers, as hedges and as topiary!

Use the map to identify the soil type in your area, then use the free visit your local nursery to choose the right plants for your soil type!

For more information, visit City of Swan website www.swan.wa.gov.au

- CENTRAL COAST PLAIN SOILS
- EASTERN COASTAL PLAIN SOILS
- SCARP SOILS



Candle Banksia
Banksia attenuata

5 – 8m
September to October