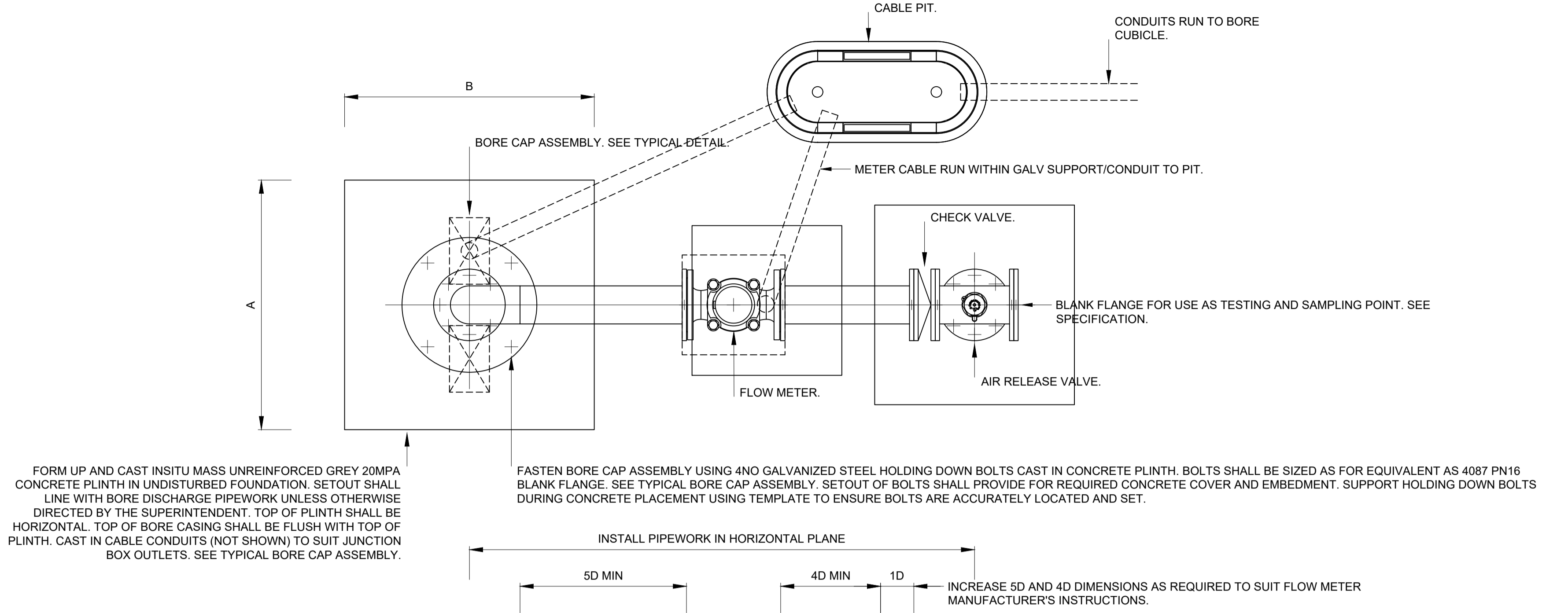


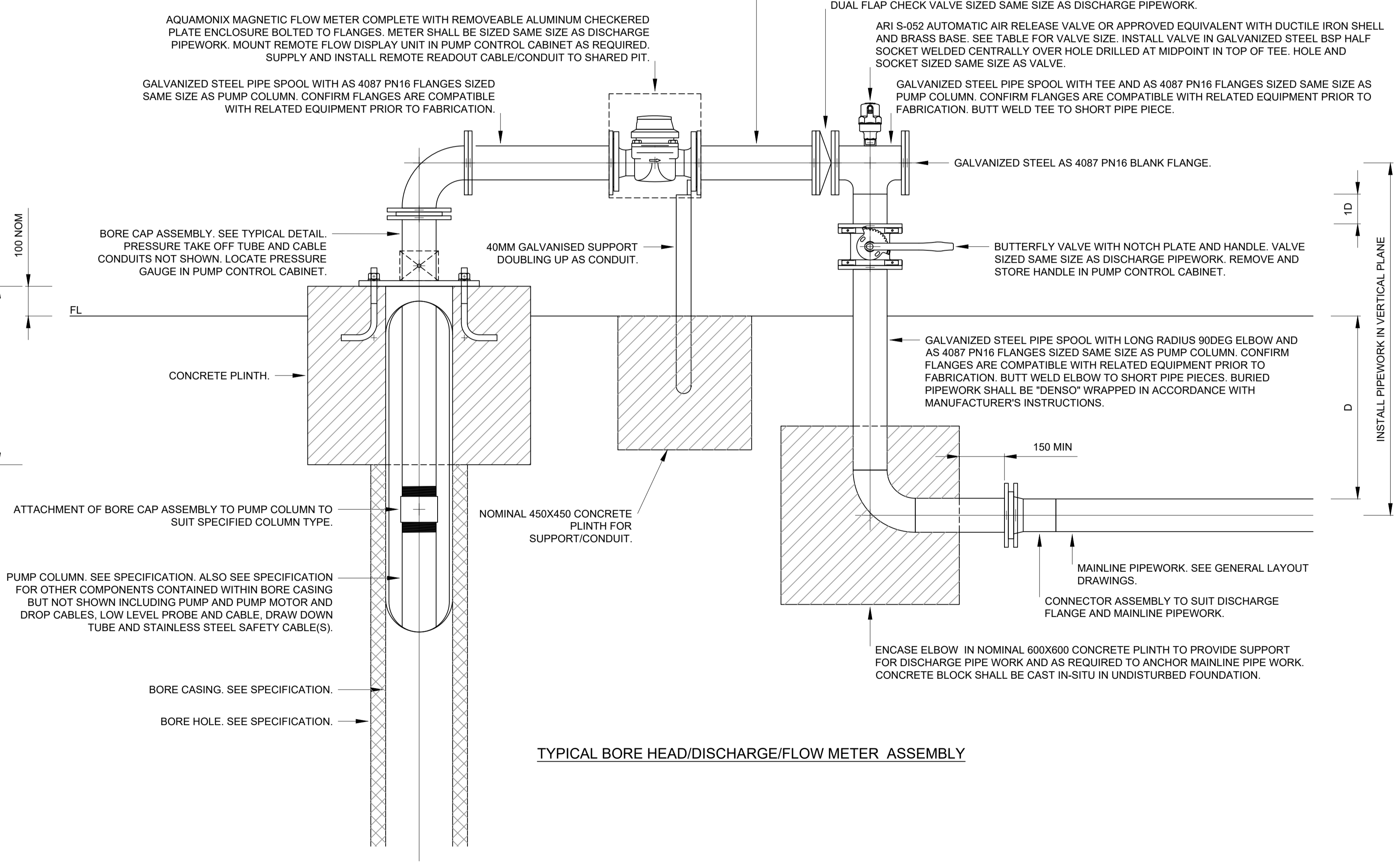
TYPICAL BORE CAP ASSEMBLY

TABLE OF BORE DISCHARGE DIMENSIONS AND FITTINGS						
PUMP COL(1)	A	B	C	D		AIR VALVE
DN50	750	750	350	(2)		DN25
DN80	750	750	600	(2)		DN25
DN100	750	750	600	(2)		DN25

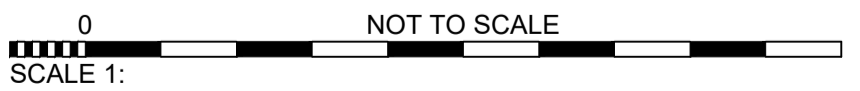
1. SEE TECHNICAL SPECIFICATION.
2. SEE TYPICAL ARRANGEMENT OF MULTIPLE PIPES IN A COMMON TRENCH.



GALVANIZED STEEL PIPE SPOOL WITH AS 4087 PN16 FLANGES SIZED SAME SIZE AS PUMP COLUMN. CONFIRM FLANGES ARE COMPATIBLE WITH RELATED EQUIPMENT PRIOR TO FABRICATION.



TYPICAL BORE HEAD/DISCHARGE/FLOW METER ASSEMBLY



Drawing file: 15731-001_Bore Discharge.dwg - 13/10/2020 09:40AM

REV	ISSUED	DRN	APPD	REVISION DESCRIPTION
0	2020.10.13	TW	AP	FOR INFORMATION



<http://hydroplan.com.au>

PERTH ADELAIDE MELBOURNE SYDNEY BRISBANE BEIJING

COPYRIGHT
This document is and shall remain the property of HYDRO-PLAN PTY. LTD. The document may only be used for the purpose for which it was commissioned and in accordance with the terms of engagement for the commission.
The arrangement and general details as shown on this drawing are essentially diagrammatic and must be applied to the circumstances as found on site.

DES/DRAWN AP/TW
CHECKED AP
APPROVED AP
DATE 2020.10.13
DRAFT REF

CLIENT
CITY OF SWAN
PROJECT
TYPICAL BORE HEAD/DISCHARGE/FLOW METER ASSEMBLY
DRAWING 15731-400
SHEET 1 OF 1
REVISION 0