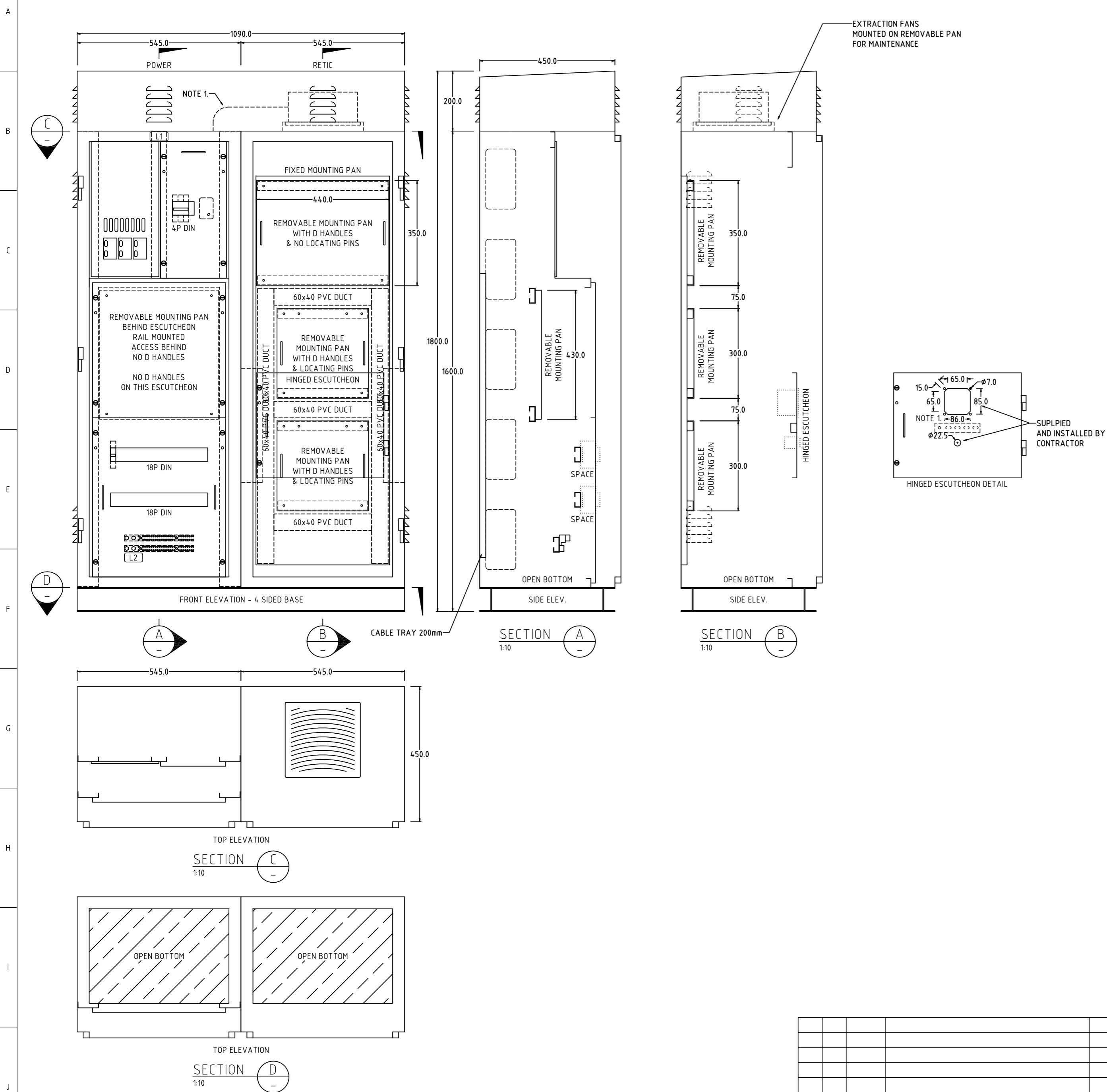


SMALL RETICULATION CABINET



MANUFACTURING NOTES:	
CUBICLE IP56 EX 2.5mm MARINE GRADE ALUMINUM	FIT DOOR WITH CP LIFT OFF HINGES
DOORS EX 2.5mm MARINE GRADE ALUMINUM	3 POINT LOCKING AND DOOR RESTRAINT
ESCUTCHEONS EX 2.5mm MARINE GRADE ALUMINUM	SELECTLOK SWING HANDLE
GLAND PLATES NOT REQUIRED	PADLOCK TO BE FITTED BY CITY OF SWAN ON HANDLE
REMOVABLE MOUNTING PANS EX 2.5mm MARINE GRADE ALUMINUM	
BASE 80x40x6mm ALUMINUM C CHANNEL (TOE OUT) 4 SIDED	"D" HANDLES AND LOCATE WITH 6mm CP LOCATION PINS
SUN ROOF REQUIRED	PROVIDE A4 DRAWING POCKETS (1) FITTED TO DOOR
VENTS WITH INSECT SCREENS TO CABINET AND ROOF	FINISH: POWDER COAT
CABINET DIMENSIONS: 1090x1600x450mm	EXTERNAL: HAWTHORNE GREEN
OVERALL DIMENSIONS: 1090x1800x450mm	ESCUTCHEONS: WHITE
	REMOVABLE MOUNTING PANS: WHITE
ALL BUSBAR JOINTS TO BE MANUFACTURED UTILISING ZINC PLATED NUTS, BOLTS, & HEAVY DUTY FLAT WASHERS	
ALL WORKS TO AUSTRALIAN STANDARDS & WA REQUIREMENTS	

IP56 ENCLOSURE, SWITCHBOARD TO BE SEALED TO CONCRETE PLINTH TO ENSURE IP RATING IS ACHIEVED. CONCRETE TO BE WATERPROOFED, AND CONDUITS SEALED. ALL CABLE ENTRIES OR CUTOUTS TO BE SEALED BY CONTRACTOR.

- NOTES:
- FAN TO BE CABLED THROUGH LEFT HAND SIDE TIER (240V). NOT THE RIGHT HAND SIDE TIER (LOW VOLTAGE).

L1	LABEL ON FRONT OF BOARD/DOOR	RETICULATION CABINET ORIGIN: WESTERN POWER LV PILLAR INCOMING CABLE: 4x1c TBAm ² XLPE/PVC RATING: 100A FAULT RATING: 25kA FORM 2, IP56	10mm BLACK/WHITE 4mm BLACK/WHITE
L2	LABEL ON ESCUTCHEON	MEN BEHIND	6mm BLACK/WHITE
	LABEL ON MEN LINK	MEN	6mm BLACK/WHITE
ITEM	TYPE	DESCRIPTION/LABEL TEXT	LABEL TXT/BCKGRD

FOR TENDER PURPOSES ONLY

PGS Industries
Design and manufacture of:
Electrical Switchboards
Sheetmetal & fabrication

20 Achievement Way
PO Box 1139, Wangara WA 6947
Telephone: (08)9302 1154
Fax: (08)9302 1254
admin@pgsindustries.com.au

CLIENT	NIDO ELECTRICAL	DESIGNED	C.S	SCALE	1:10@A2	DATE	25-08-20
PROJECT	AUTOCAD SCHEMATIC	DRAWN	C.S	CHECKED	C.W		
REV	ISSUE	DATE	REVISION	DRN	CKD	TITLE	SWITCHBOARD PRELIMINARY DRAWING
0	P	25-09-20	PRELIMINARY			DRAWING	15787-1
						REVISION	0
						ISSUE	P

