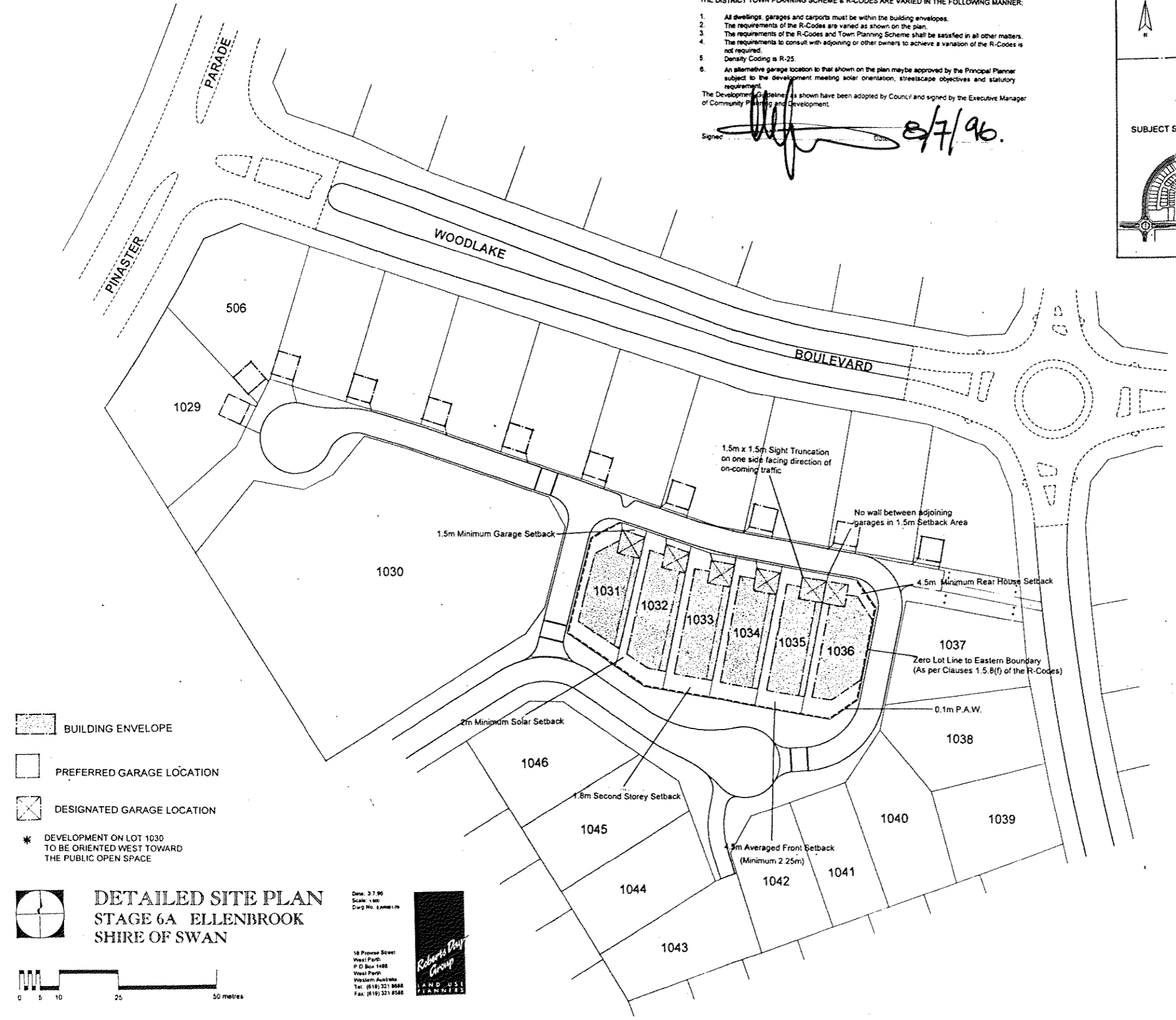
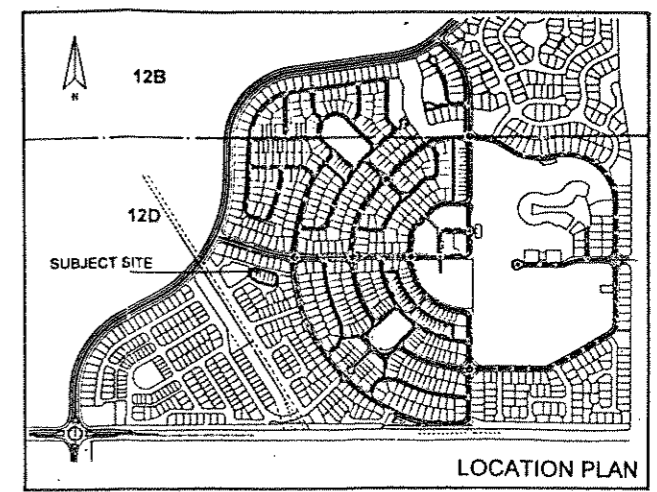
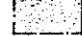




THE DISTRICT TOWN PLANNING SCHEME & R-CODES ARE VARIED IN THE FOLLOWING MANNER:

1. All dwellings, garages and carports must be within the building envelopes.
  2. The requirements of the R-Codes are varied as shown on the plan.
  3. The requirements of the R-Codes and Town Planning Scheme shall be satisfied in all other matters.
  4. The requirements to consult with adjoining or other owners to achieve a variation of the R-Codes is not required.
  5. Density Coding is R-25.
  6. An alternative garage location to that shown on the plan may be approved by the Principal Planner subject to the development meeting solar orientation, streetscape objectives and statutory requirements.
- The Development Guidelines as shown have been adopted by Council and signed by the Executive Manager of Community Planning and Development.

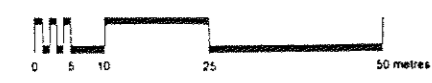
Signature:  Date: 8/7/96.



-  BUILDING ENVELOPE
-  PREFERRED GARAGE LOCATION
-  DESIGNATED GARAGE LOCATION

\* DEVELOPMENT ON LOT 1030 TO BE ORIENTED WEST TOWARD THE PUBLIC OPEN SPACE

**DETAILED SITE PLAN  
STAGE 6A ELLENBROOK  
SHIRE OF SWAN**



Date: 3/7/96  
Scale: 1:400  
Dwg No. 1/AM/1/1/1/1

18 Pioneer Street  
West Perth  
P.O. Box 1498  
West Perth  
Western Australia  
Tel: (618) 321 8688  
Fax: (618) 321 8588



**CITY OF SWAN**  
**Planning Information**  
ECM Doc Set ID: 5444537  
Approval Date: 08/07/1996

*Disclaimer:*  
The City makes every attempt to keep its published records up to date; however the subject document may have been superseded by a more recently approved document.