



WESTERN AUSTRALIAN
PLANNING COMMISSION

CITY OF SWAN
Planning Information
 ECM Doc Set ID: 5123304
 Approval Date: 15/11/2004

Disclaimer:
 The City makes every attempt to keep its published records up to date; however the subject document may have been superseded by a more recently approved document.

Our Ref: 808/2/21/4P86V
Your Ref: RD:DMC ODP135 & P190100
Enquiries: Sarah Cosstick

Chief Executive Officer
City of Swan
PO Box 196
SWAN WA 6936

ATTENTION: Marc Cornell

Dear Sir/Madam

FILE REF: MOPP 135
 DOC REF: DW # 69096
 ASSESS NO:
 RECEIVED 19 NOV 2004
 CITY OF SWAN

DEPT:	Plan.		
OFFICER:	MC		
SIGN:	<i>[Signature]</i>		

NOTE D 24-11-04

OUTLINE DEVELOPMENT PLAN NO. 135 - AGED & DEPENDENT PERSONS GROUPED DWELLINGS (72) - LOTS 16 & 17 MORRISON ROAD, SWAN VIEW.

I refer to your correspondence dated 18 October 2004 regarding the above matter.

The Commission has resolved, in accordance with Clause 6.2.1.5 of the City of Swan Town Planning Scheme No. 9, to endorse the attached modified Outline Development Plan No. 135 date stamped by Council 13 October 2004 and received by the Department for Planning and Infrastructure on 26 October 2004.

Please find enclosed two copies of ODP No. 135 as endorsed by the Commission on 15 November 2004.

Should you have any queries in relation to this matter, please contact Sarah Cosstick on 9264 7627.

Yours faithfully

[Handwritten signature: Ian Patterson]

For Ian Patterson
Secretary
Western Australian Planning Commission

18 November 2004

Enclosed: ODP No. 135 (2 copies)

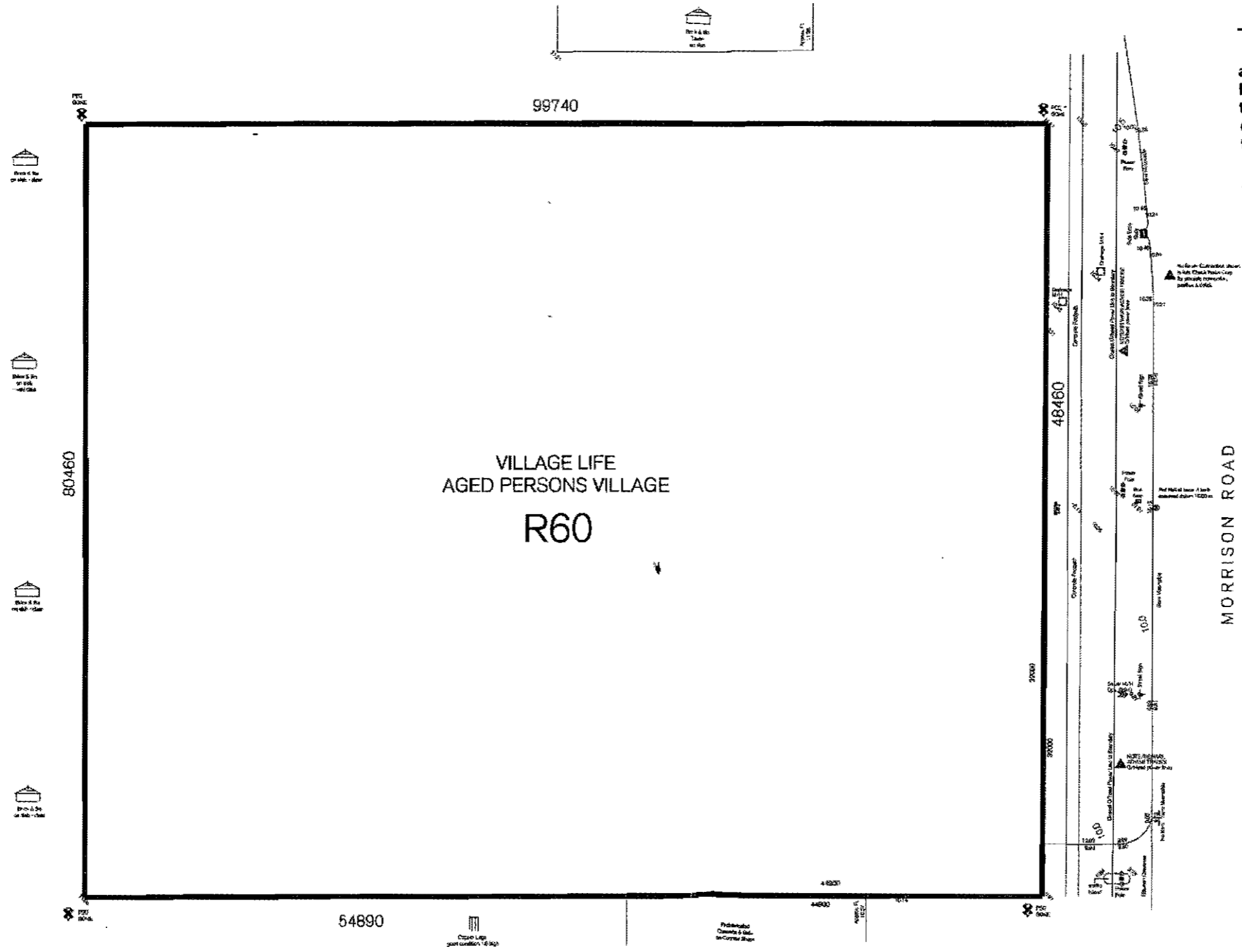


Signed for and on behalf of the Western Australian Planning Commission as endorsed on 15 November 2004

Neil Wood

an officer of the Commission duly authorised by the Commission pursuant to section 57 of the *Western Australian Planning Commission Act 1985* for that purpose, in the presence of:

Witness
Date
18 NOV 2004



CITY of SWAN
APPROVED ODP No. 135
Date of council approval
13 OCTOBER 2004
Principal Planner

DEPARTMENT FOR PLANNING AND INFRASTRUCTURE
26 OCT 2004
FILE 808-2-21-408

This concept has been prepared for the purpose of meeting client specifications. The drawing does not constitute an invitation, agreement or contract (or any part thereof) of any kind whatsoever.
Although care has been taken in the compilation of this drawing by the Planning Group WA Pty Ltd, all parties associated with the proposed property development, disclaim all responsibility for any errors or omissions. The right is reserved to change the plan at any time.
Liability is expressly disclaimed by The Planning Group WA Pty Ltd for any loss or damage which may be sustained by any person acting on any visual impression gained from this drawing.

A
N
C

Figure No: 1
Title: OUTLINE DEVELOPMENT PLAN
Lots 16 and 17 Morrison Rd, Swan View
Date: 27 August 2004 Revision No: 1
Scale: 1:500 @ A3 Job No: 704.121
Designer: Drawn: S.L.
E Reference: ODP3.dgn

THE PLANNING GROUP

Perth
Level 7
162 St Georges Terrace
Perth Western Australia 6000
Telephone +61 08 9289 8300
Facsimile +61 08 9331 4786
perth@tpgwa.com.au
www.planninggroup.com.au